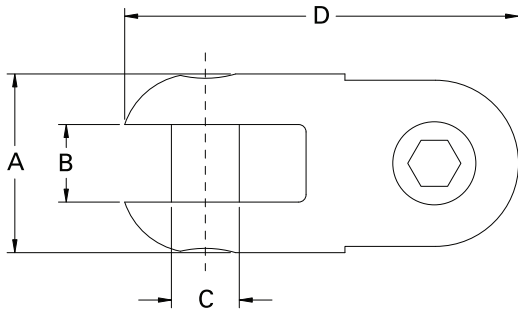




PULLING ACCESSORIES

Can-Link Connector — 00520 Series

- The 00520 Connector is used to connect two items with lugs or wire loop fittings. A common use is to connect a wire mesh grip to the pulling wire. The connectors are manufactured from high strength Stainless Steel with hardened Clevis Pins. The two smaller sizes have slotted Clevis Pins while the larger ones have hexagon Clevis Pins.



Catalog Number	*Safe Working Load	A	B	C	D	Weight
00520-010	2500 lbs.	7/8"	3/8"	5/16"	2 1/8"	0.19 lbs.
00520-020	5000 lbs.	1 1/4"	17/32"	13/32"	2 7/8"	0.50 lbs.
00520-027	9000 lbs.	1 1/2"	19/32"	1/2"	3 3/8"	0.80 lbs.
00520-035	15000 lbs.	2"	25/32"	11/16"	4 9/16"	2.00 lbs.

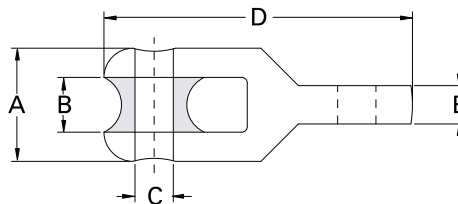
*Safety Factor of 3:1

Rope to Swivel Connector — 00522 Series

- This product is used to connect a swivel to pulling rope. The entire product, including sheave, is manufactured from stainless steel.

Line Swivel Selection

Connector #	Use with these Line Swivels
00522-025:	00505-020 00505-025 00505-027
00522-035:	00505-030 00505-035



Catalog Number	*Safe Working Load	Maximum Rope Diameter	A	B	C	D	E	Weight
00522-025	7,000 lb.	7/8"	2"	15/16"	11/16"	5 5/16"	1/2"	2.10 lbs.
00522-035	15,000 lb.	7/8"	2"	15/16"	11/16"	5 3/8"	21/32"	2.30 lbs.

*Safety Factor of 3:1



Current Tools
FOR THE PROFESSIONAL ELECTRICIAN

www.currenttools.com

P.O. Box 17026 • Greenville, SC 29606 • 864.244.1201 • fax 864.244.5860 • 800.230.5421