



SHEAVES & CABLE ROLLERS

Manhole Sheaves

- 4,000 lb. Capacity
- Easy set-up for manhole pulls
- Aluminum alloy frame for extra strength and light weight
- Adjustable sheave positions
- 8' unit has 12" sheaves, 10' and 12' units have 18" sheaves
- Made in the USA



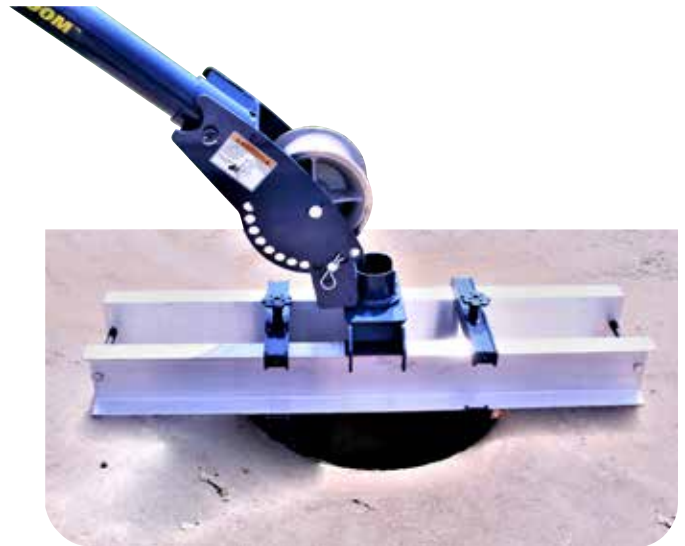
Scan here for manual



Catalog Number	Description	Weight	
308	8' Manhole Sheave	81 lbs.	UPC 811993022821
310	10' Manhole Sheave	102 lbs.	UPC 811993022838
312	12' Manhole Sheave	140 lbs.	UPC 811993022845

320 Manhole Bridge

- Provides a stable platform when pulling out of a manhole
- For use with Models #66, #8890 and #100 puller packages
- Heavy duty 12,000 lb. capacity
- Adjusts to fit 18" to 46" diameter manhole
- Aluminum frame provides strength and minimizes weight
- For use with 4" slip-in coupling. Optional 6" coupling receiver available.
- Made in USA



Scan here for manual



Catalog Number	Description	Weight	
320	Manhole Bridge for 18" to 46" diameter manhole	60 lbs.	UPC 811993026713



Current Tools
FOR THE PROFESSIONAL ELECTRICIAN

www.currenttools.com

P.O. Box 17026 • Greenville, SC 29606 • 864.721.4230 • fax 864.721.4232 • 800.230.5421