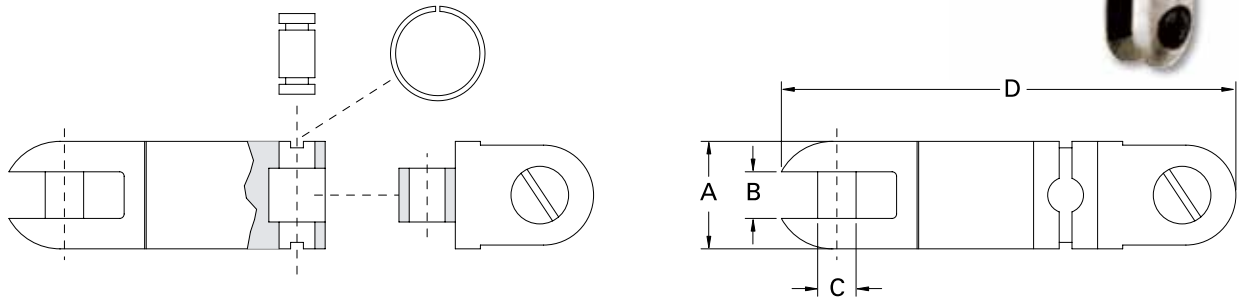




PULLING ACCESSORIES

Breakaway Swivel – 00550 Series

- The purpose of this product is to protect the cable being installed from overload as well as providing the function of a regular Line Swivel. Typically, they are used during the installation of Fiber Optic cable where the swivel can be pre-set to breakaway at a pre-determined load, thus protecting the fibers or the conduit.
- Breakaway pin kits are ordered separately from breakaway swivels.
- Breakaway pin load ratings are within +/-10%.
- The Swivel is constructed of stainless steel and the breakaway pins are color coded for easy identification.



Note: Breakaway pin kits not included with breakaway swivels and must be ordered from chart below.

Catalog Number	A	B	C	D	Use Breakaway Pin Kits in:	Weight	
00550-005	5/8"	9/32"	3/16"	3-1/4"	GROUP A	0.17 lb.	UPC 811993023187
00550-010	7/8"	3/8"	5/16"	4-1/16"	GROUP B	0.42 lb.	UPC 811993023194
00550-020	1-1/4"	17/32"	13/32"	5-9/16"	GROUP C	1.20 lbs.	UPC 811993023200

Breakaway Pin Kits

Must be purchased in standard package quantity

Catalog Number	Breaking Point	Color Code		Standard Pack	
00555-002	200 lbs.	WHITE	Group A use with 00550-005	10	UPC 811993023217
00555-0034	340 lbs.	RED			UPC 811993023224
00555-004	400 lbs.	YELLOW			UPC 811993023231
00555-0045	450 lbs.	BLUE			UPC 811993023248
00555-006	600 lbs.	ORANGE			UPC 811993023255
00555-007	675 lbs.	BLACK			UPC 811993023262
00535-002	200 lbs.	WHITE			Group B use with 00550-010
00535-004	400 lbs.	YELLOW	UPC 811993023309		
00535-006	600 lbs.	ORANGE	UPC 811993023316		
00535-008	800 lbs.	GREY	UPC 811993023323		
00535-010	1000 lbs.	RED	UPC 811993023330		
00555-018	1,800 lbs.	GREEN	Group C use with 00550-020	5	UPC 811993023279
00555-020	2,000 lbs.	BLUE			UPC 811993023286

Various break points available up to 4000 lbs. upon request



Current Tools
FOR THE PROFESSIONAL ELECTRICIAN

www.currenttools.com

P.O. Box 17026 • Greenville, SC 29606 • 864.721.4230 • fax 864.721.4232 • 800.230.5421