



Pulling Grips – 00682 Series

TRIPLE WEAVE – ROTARY HEAD – SHOULDERS

These grips offer a Stainless Steel Rotary Head with Shoulders and Triple Weave galvanized wire construction. The shoulders help to protect the leading edge of the cable and this type should be used for heavy duty applications.



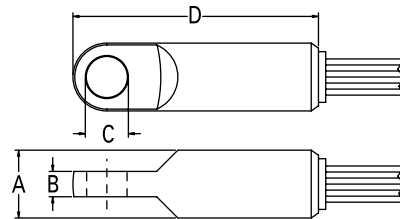
Note: The Rotating Head does not replace the use of a Line Swivel, Series 00505. There are no bearings to allow rotation under load and severe damage may occur to the cable being installed if this product is used without the correct swivel.

Catalog Number	Size Range	Mesh Length	A	B	C	D	Approx. Breaking Strength	Weight	
00682-006	0.25" to 0.49"	28"	7/8"	5/16"	1/2"	2 3/4"	6,500 lbs.	1.5 lbs.	UPC 811993023989
00682-012	0.50" to 0.74"	33"	1"	1/2"	9/16"	3 7/8"	10,400 lbs.	1.9 lbs.	UPC 811993023996
00682-019	0.75" to 0.99"	41"	1"	1/2"	9/16"	3 7/8"	16,000 lbs.	3.2 lbs.	UPC 811993024009
00682-025	1.00" to 1.24"	51"	1 3/8"	1/2"	11/16"	5 3/8"	25,400 lbs.	5.1 lbs.	UPC 811993024016
00682-032	1.25" to 1.49"	60"	1 5/8"	9/16"	7/8"	6 1/8"	31,700 lbs.	6.0 lbs.	UPC 811993024023
00682-038	1.50" to 1.99"	70"	1 7/8"	11/16"	1"	7 1/4"	32,000 lbs.	6.5 lbs.	UPC 811993024030
00682-048	2.00" to 2.49"	75"	1 7/8"	11/16"	1"	7 1/4"	44,600 lbs.	6.7 lbs.	UPC 811993024047

Pulling Grips – 00690 Series

DOUBLE WEAVE – ROTARY HEAD – SHOULDERS

These grips offer a Rotating Eye with Shoulders and Double Weave galvanized wire construction. The shoulders help to protect the leading edge of the cable and this type should be used for heavy duty applications.



Note: The Rotating Head does not replace the use of a Line Swivel. There are no bearings to allow rotation under load and severe damage may occur to the cable being installed if this product is used without the correct swivel.

Catalog Number	Size Range	Mesh Length	A	B	C	D	Approx. Breaking Strength	Weight	
00690-038	0.50" to 0.74"	16"	7/8"	5/16"	1/2"	2 3/4"	5,800 lbs.	1.5 lbs.	UPC 811993024054
00690-050	0.75" to 1.12"	24"	7/8"	5/16"	1/2"	2 3/4"	6,700 lbs.	1.6 lbs.	UPC 811993024061
00690-100	1.13" to 1.49"	33"	1 3/8"	1/2"	11/16"	5 3/8"	13,000 lbs.	1.9 lbs.	UPC 811993024078
00690-125	1.50" to 1.99"	36"	1 3/8"	1/2"	11/16"	5 3/8"	16,500 lbs.	2.3 lbs.	UPC 811993024085
00690-200	2.00" to 2.49"	36"	1 5/8"	9/16"	7/8"	6 1/8"	27,000 lbs.	3.8 lbs.	UPC 811993024092
00690-250	2.50" to 2.99"	38"	1 7/8"	11/16"	1"	7 1/4"	33,000 lbs.	5.0 lbs.	UPC 811993024108
00690-300	3.00" to 3.74"	39"	1 7/8"	11/16"	1"	7 1/4"	41,000 lbs.	5.2 lbs.	UPC 811993024115
00690-350	3.75" to 4.24"	42"	1-7/8"	11/16"	1"	7 1/4"	48,000 lbs.	9.2 lbs.	UPC 811993024122
00690-400	4.25" to 4.99"	58"	1-7/8"	11/16"	1"	7 1/4"	48,000 lbs.	9.9 lbs.	UPC 811993024139

Always read Breaking Strength, safety and technical data information.

