



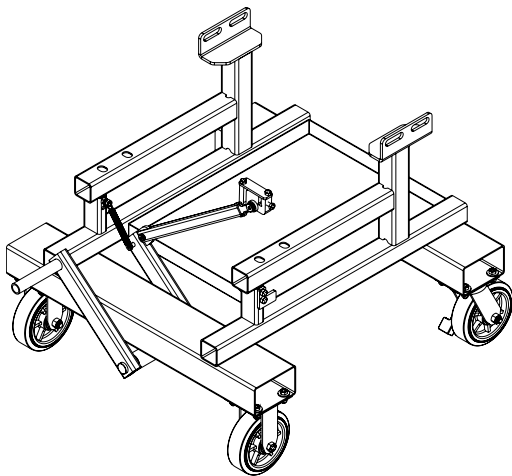
Current Tools

FOR THE PROFESSIONAL ELECTRICIAN

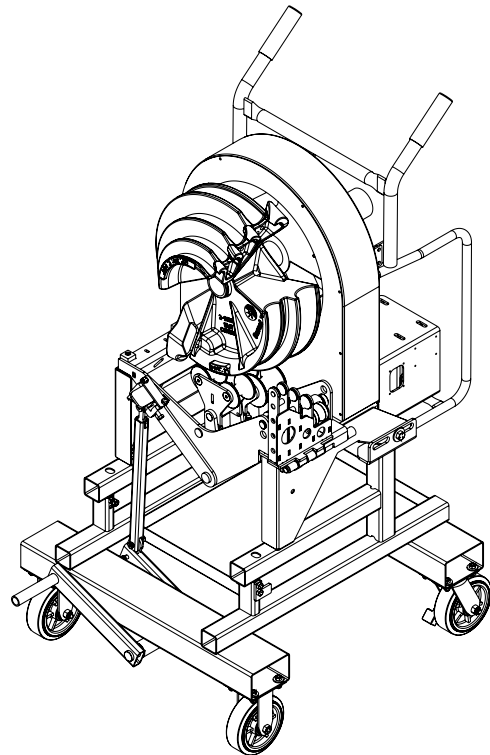
77HRB

High Rise Base for Model 77 Series Electric Benders

— Will also fit Greenlee® Model 555®C Benders*



Model 77HRB



Shown with Current Tools Model 77SE Single Shoe Bender

Operating, Safety and Parts Manual

11/2017



This manual should be read and understood by all personnel who operate this high rise base. Failure to understand how to safely operate this unit could result in injury or property damage. This unit should only be operated by qualified personnel.

This manual is free of charge. All personnel who operate this high rise base should have a copy of this manual and read and understand its contents. To request a copy, call or write to the address below.

CURRENT TOOLS • P. O. BOX 17026 GREENVILLE, SC 29606
800.230.5421 or 864.721.4230 • FAX 864.721.4232
www.currenttools.com

**Greenlee® and 555® are registered trademarks of Greenlee/Extron.*

TABLE OF CONTENTS

<i>Important Safety Information</i>	2
<i>Model Description</i>	2
<i>Bender Mounting Instructions</i>	3,4
<i>Roller Support Instructions for 1 ½" and 2" EMT or IMC</i>	5
<i>Linkage Arm Storage</i>	6
<i>Exploded View and Parts List</i>	6

RETAIN SAFETY INFORMATION



This manual should be read and understood by all personnel who operate this high rise base. Failure to understand how to safely operate this unit could result in injury or property damage. This unit should only be operated by qualified personnel.

IMPORTANT SAFETY INFORMATION

Follow ALL safety information provided by the manufacturer.

- CAUTION** DO NOT stand on high rise base.
- CAUTION** ONLY mount Current Tools Model 77 Electric Bender or Greenlee® Model 555®C Bender to the high rise base.*
- CAUTION** ALWAYS refer to manufacturers operating instruction manual for proper operating instructions of the bender.
- CAUTION** ONLY roll on a firm, flat, smooth surface.
- CAUTION** ALWAYS make sure the bender is properly secured to the high rise base before moving or operating the bender.
- CAUTION** NEVER alter the high rise base.
- CAUTION** ONLY use the forklift pockets to lift the high rise base.
- CAUTION** ALWAYS lock the two swivel locking casters when operating the bender.

MODEL DESCRIPTION

77HRB	High Rise Base with mounting hardware for use with Current Tools Model 77 Bender and Greenlee® Model 555®C Bender.*
--------------	---

*Greenlee and 555 are registered trademarks of Greenlee/Textron.

BENDER MOUNTING INSTRUCTIONS

1. Install casters on the High Rise Base. The two rigid casters mount on the front of the frame and the two swivel casters mount on the rear of the frame (See Figure 3A).
2. Remove all bending shoes and roller supports from the bender.

NOTE: Newer style Greenlee® 555®C* Benders may not have mounting holes in the bottom pads of the front legs. In order to mount these units, holes will need to be drilled. See Figure 3B for hole size and location

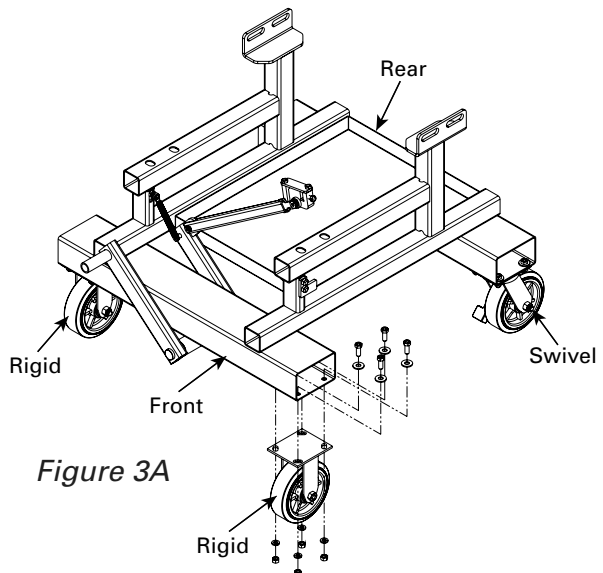


Figure 3A

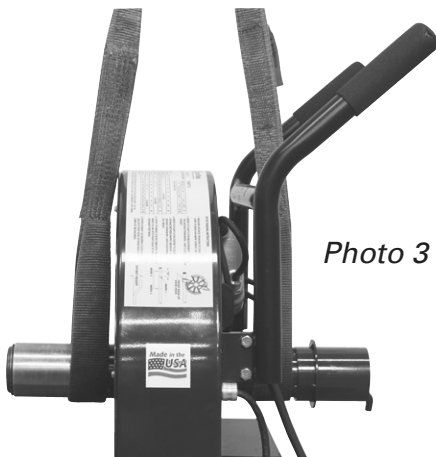


Photo 3

3. Remove both wheels and the axle from the bender.
4. Lock the swivel casters on the High Rise Base.
5. Attach a strap rated for a minimum of 500 lbs. around the front nose of the bender as well as around the rear shoe storage nose of the bender (see photo 3).
6. Next, identify the shoe group you will be using to determine the bender mounting position.

See Figure 3C for illustrations on the correct mounting position of the bender for single shoe groups and multi-shoe groups. The bender must be mounted in the correct position for all components to operate properly.

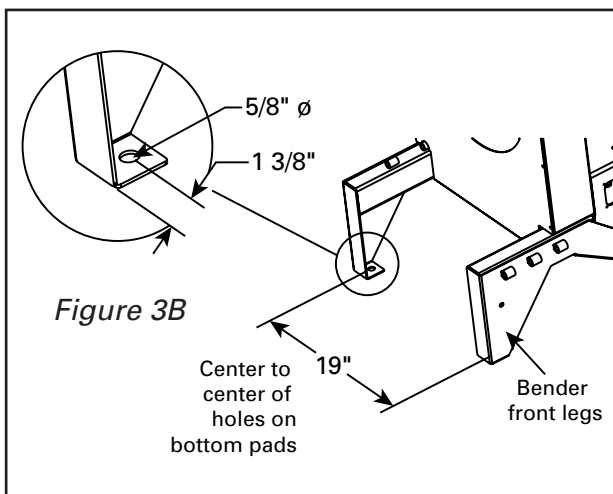


Figure 3B

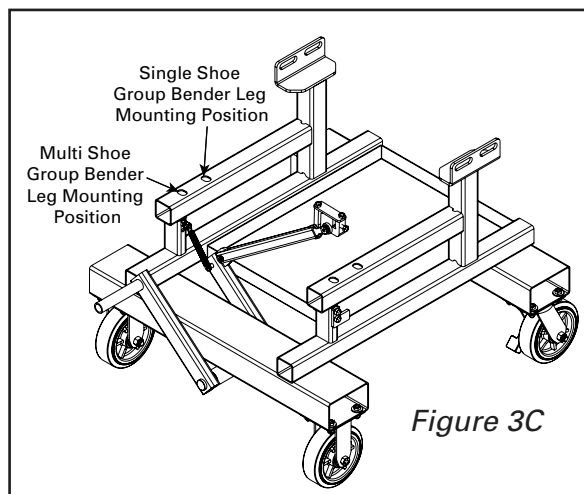


Figure 3C

*Greenlee and 555 are registered trademarks of Greenlee/Textron.



BENDER MOUNTING INSTRUCTIONS – *continued*

7. Place the bender onto the High Rise Base, lining up the mounting holes on the bender with the correct mounting holes on the base. Install and tighten the provided hardware as shown in Figure 4.

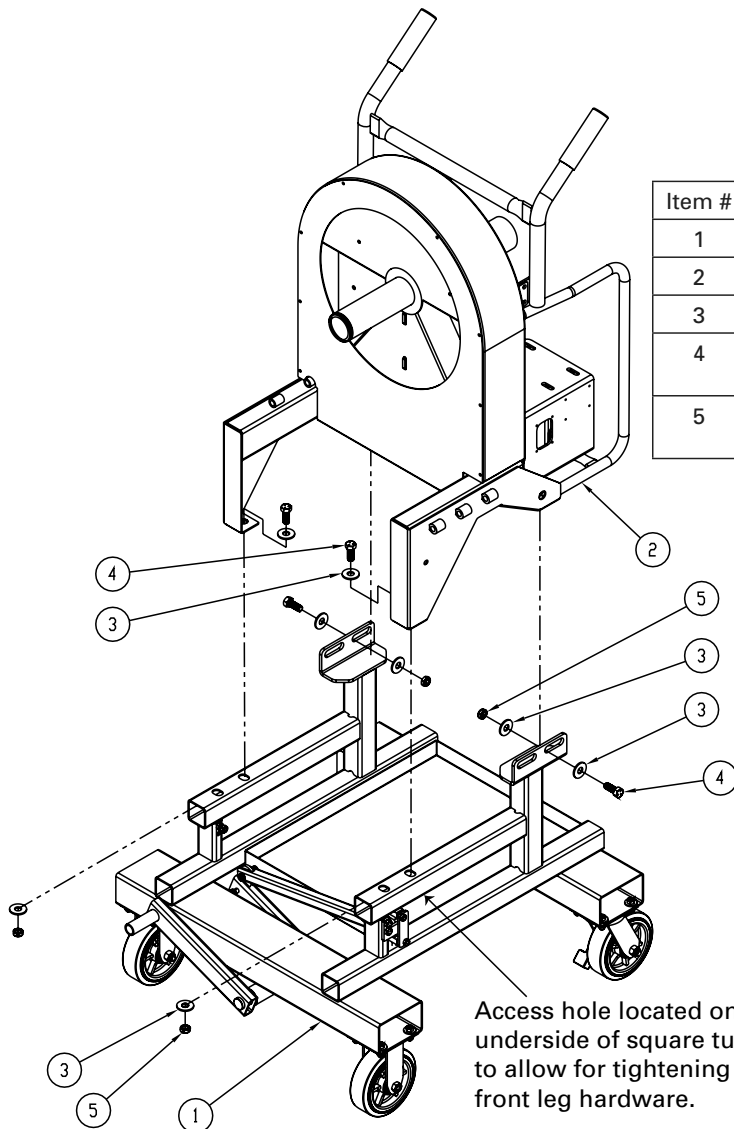
NOTE: For the single shoe mounting position (see Figure 3C and Figure 4), an access hole is provided on the underside of the square tubing to allow for tightening of the front leg hardware.

8. If desired, take the bender handle off the bender by removing the four (4) bolts holding it onto the bender frame.

9. Re-install the bending shoe and roller support according to the appropriate bender operating manual.

CAUTION

ALWAYS lock the two swivel locking casters when operating the bender.



Item #	Part #	Qty.	Description
1	77HRB-101	1	High Rise Base
2	77	1	Electric Bender
3	451-25	8	Washer
4	77-025	4	Screw – Hx Hd Cap 1/2-13 x 1 1/4"
5	281-15	4	Nut – Hex, 1/2-13 Thin Nylon Insert

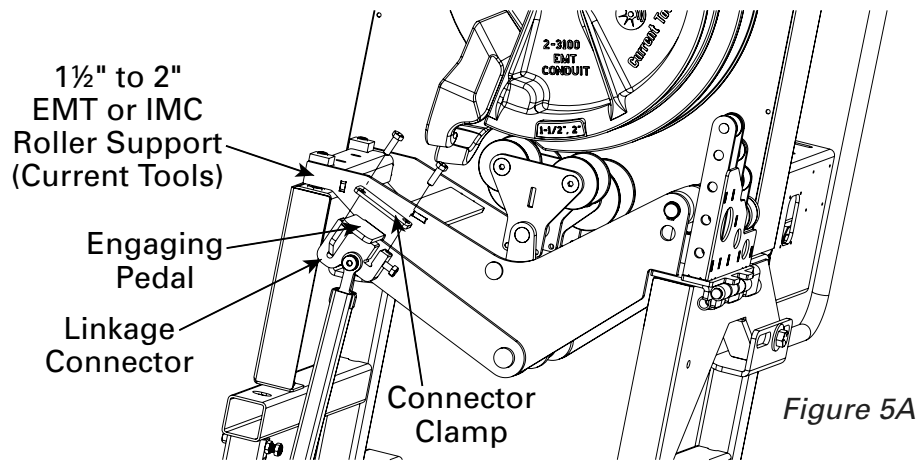
Figure 4

Access hole located on underside of square tubing to allow for tightening of front leg hardware.

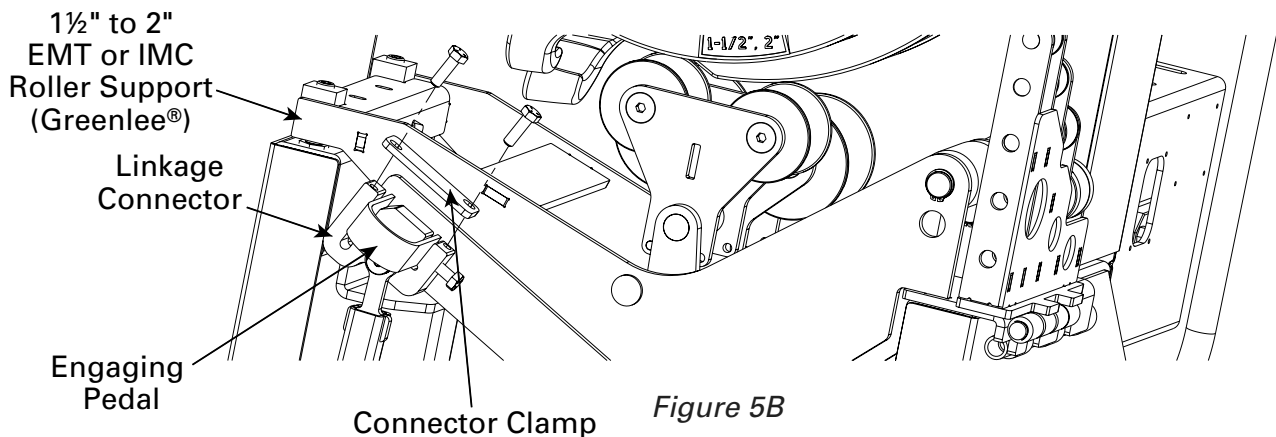
Shown mounting the bender to the High Rise Base for use with single shoe groups

ROLLER SUPPORT INSTRUCTIONS FOR 1 1/2" AND 2" EMT OR IMC CONDUIT

1. Refer to the appropriate conduit bender manual for mounting instructions of the shoe and roller support. Be sure to match the correct shoe with its corresponding roller support and install on the bender.
2. Attach the roller support linkage connector to the “engaging pedal” on the roller support. See drawing 5A for attaching the linkage connector to the Current Tools roller support and drawing 5B for attaching the linkage connector to the Greenlee® roller support.*



NOTE: The two screws that go through the connector clamp need to be tightened onto the Current Tools engaging pedal. The third screw is only needed when mounting to a Greenlee® roller support.*



NOTE: All three screws on the linkage connector must be tightened onto the Greenlee® engaging pedal.*

3. The foot pedal mounted on the 77HRB frame will now become the “engaging pedal” to operate the roller support. With the roller support linkage attached, refer to the bending instructions for 1 1/2" and 2" EMT or IMC conduit located in the appropriate conduit bender manual.

*Greenlee is a registered trademark of Greenlee/Extron.

LINKAGE ARM STORAGE

When the roller support linkage arm is not required, a storage bracket is provided. See Figure 6 for linkage arm storage illustration.

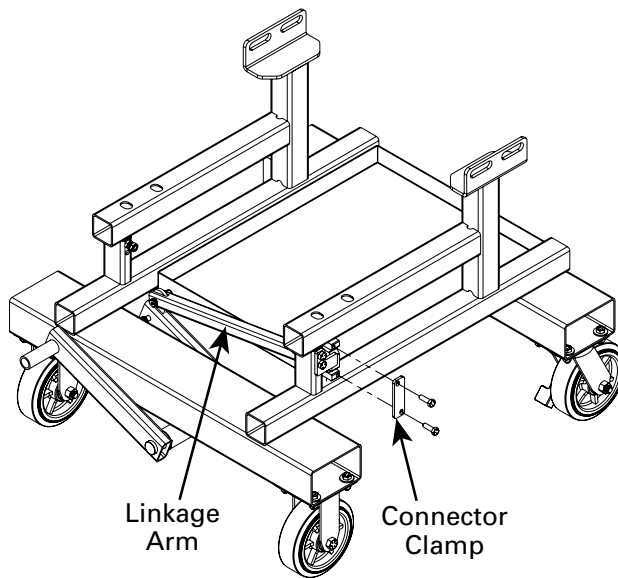


Figure 6

EXPLODED VIEW & PARTS LIST

ITEM#	PART#	QTY	DESCRIPTION
1.....	2-1301-4.....	1	LOCKNUT, NYLON INSERT – 5/16-18
2.....	2-1501-4.....	3	LOCKNUT, NYLON INSERT – 3/8-16
3.....	33-29.....	1	SCREW, SKT. SHOULDER – 3/8" × 2"
4.....	77-002D1.....	3	SCREW, HX. HD. CAP – 5/16-18 × 3/4"
5.....	77HRB-001.....	1	SCREW, SKT. SHOULDER – 3/8" × 3/4"
6.....	77HRB-002.....	1	SCREW, SKT. SHOULDER – 3/8" × 1"
7.....	77HRB-005.....	3	SCREW, HX. HD. CAP – 3/8-16 × 2 3/4"
8.....	77HRB-006.....	1	SCREW, SKT. SHOULDER – 3/8-16 × 1/2"
9.....	77HRB-101.....	1	BASE
10.....	77HRB-104.....	1	LEVER – FOOT
11.....	77HRB-112.....	1	CONNECTOR – LINKAGE
12.....	77HRB-119.....	1	CLAMP – CONNECTOR
13.....	77HRB-126.....	1	ARM – LINKAGE
14.....	77HRB-129.....	1	ARM – LEVER
15.....	77HRB-130.....	1	MOUNT – BRACKET
16.....	452-27.....	16	WASHER, LOCK – 3/8"
17.....	452-28.....	16	NUT, HEX – 3/8-16
18.....	506-3.....	16	WASHER, FLAT – 3/8"
19.....	513-001.....	2	CASTER – SWIVEL
20.....	513-002.....	2	CASTER – FIXED
21.....	524-11.....	16	SCREW, HX. HD. CAP – 3/8"-16 × 1"
22.....	610-25.....	2	LOCKNUT, THIN NYLON INSERT – 3/8-16
23.....	747-37.....	1	SPRING
24.....	812-14.....	2	BUSHING

