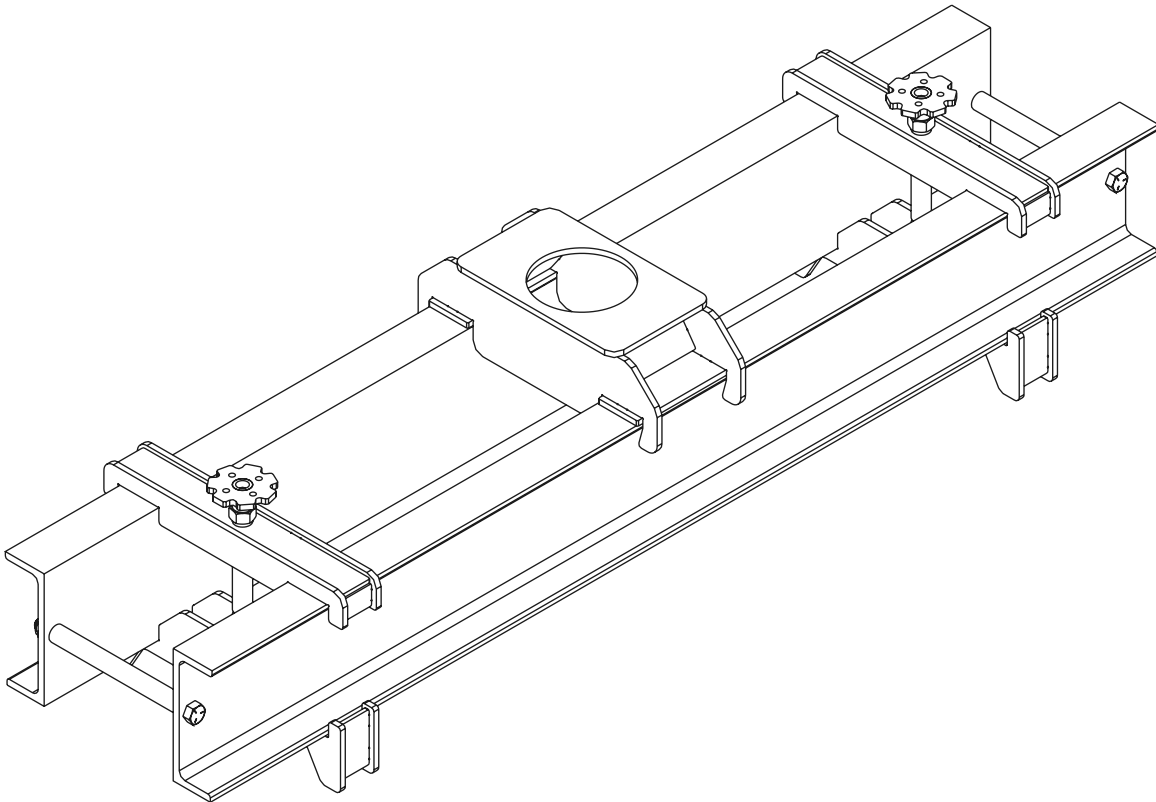




# ***Current Tools***

**FOR THE PROFESSIONAL ELECTRICIAN**

## **Model 320 Manhole Bridge**



## **Operating, Safety and Parts Manual**

12/2019



**Read and understand this material before operating or servicing this Manhole Bridge. Failure to understand how to safely operate and service this unit could result in serious injury.**

This manual is free of charge. All personnel who operate or service this Manhole Bridge should have a copy of this manual and read and understand its contents. To request a copy, call, write to the address below or visit our website at [www.currenttools.com](http://www.currenttools.com). All information, specifications and product designs may change due to design improvements or updates and are subject to change without notice. Current Tools does not assume any liability for damages resulting from misuse or incorrect application of its products.

**CURRENT TOOLS • P. O. BOX 17026 GREENVILLE, SC 29606**  
**800.230.5421 or 864.721-4230 • FAX 864.721.4232**  
**[www.currenttools.com](http://www.currenttools.com)**



## Safety Alert Symbol

THIS SAFETY SYMBOL is used to call your attention to instructions that concern your personal safety. It means: ATTENTION! BE AWARE! THIS IS AN IMPORTANT SAFETY INSTRUCTION!

Read, understand and follow these safety instructions. Failure to follow these safety instructions may result in injury or death.

### **DANGER**

Immediate hazards which, if not avoided, WILL result in serious personal injury or death.

### **WARNING**

Hazards or unsafe practices which, if not avoided, COULD result in serious personal injury or death.

### **CAUTION**

Hazards or unsafe practices which, if not avoided, COULD result in minor personal injury or property damage.

## RETAIN SAFETY INFORMATION



This manual should be read and understood by all personnel who install or operate this Manhole Bridge. Failure to understand how to safely install and operate this unit could result in injury or death. This unit should only be installed or operated by qualified personnel.



## IMPORTANT SAFETY INFORMATION

- ⚠ DANGER** DO NOT use the manhole bridge as a hoist or for lifting, supporting or transporting people or loads.
- ⚠ WARNING** READ and understand instruction manual before use.
- ⚠ WARNING** NEVER stand in the direct line of the pull.
- ⚠ WARNING** ALWAYS ensure the manhole is capable of supporting the maximum pulling load.
- ⚠ WARNING** NEVER exceed the cable manufacturer's specified pulling force or bend radius of the cable.
- ⚠ WARNING** ALWAYS match the puller coupling with the corresponding manhole bridge coupling receiver size.
- ⚠ WARNING** DO NOT exceed the load rating of the manhole bridge.
- ⚠ WARNING** When making a vertical cable pull, keep the area underneath the cable pull clear of all personnel.
- ⚠ WARNING** Manhole MUST be unoccupied during the pull.
- ⚠ WARNING** Position the manhole bridge coupling receiver to avoid pulling the rope and conductors across edges.

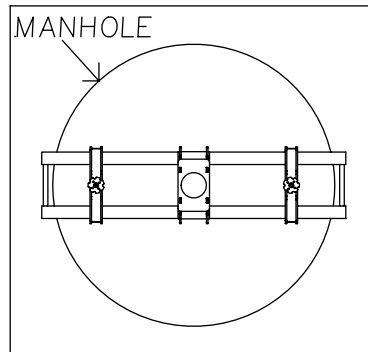


## SPECIFICATIONS

<b>Model No.</b>	320
<b>Overall Dimensions</b>	48" W × 12½" D × 10" H
<b>Min. Manhole Diameter</b>	18"
<b>Max. Manhole Diameter</b>	46"
<b>Capacity</b>	12,000 lbs.
<b>Weight</b>	60 lbs.

# OPERATING INSTRUCTIONS

1. Center the Manhole Bridge over the manhole. Make sure the ends of the frame extend evenly on both sides of the manhole. (See Figure 4A).



*Centered over the manhole*

FIG. 4A

2. Loosen the knobs on the two clamps and slide the clamps outward until they touch the rim of the manhole. Tighten the knobs on both clamps to secure against the rim of the manhole. (See Figure 4B).

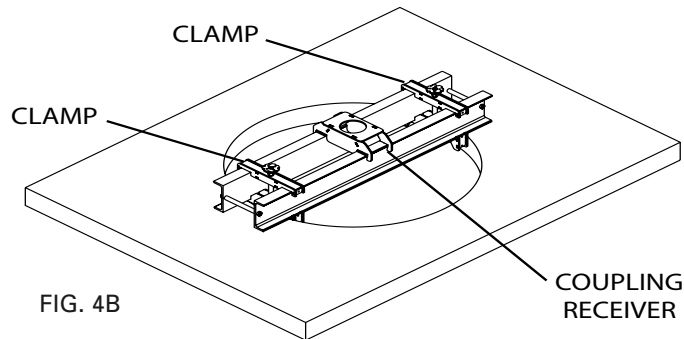


FIG. 4B

*Secure clamps against the edges of the manhole*

3. If needed, slide the coupling receiver so that the rope and conductors will not be pulled across any edge.

4. Install the 4" slip-in coupling onto the cable puller. Next, insert the slip-in coupling into the coupling receiver (See Figure 4C).

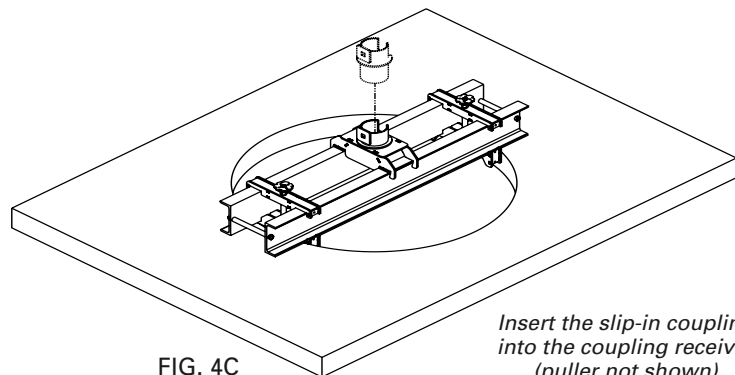


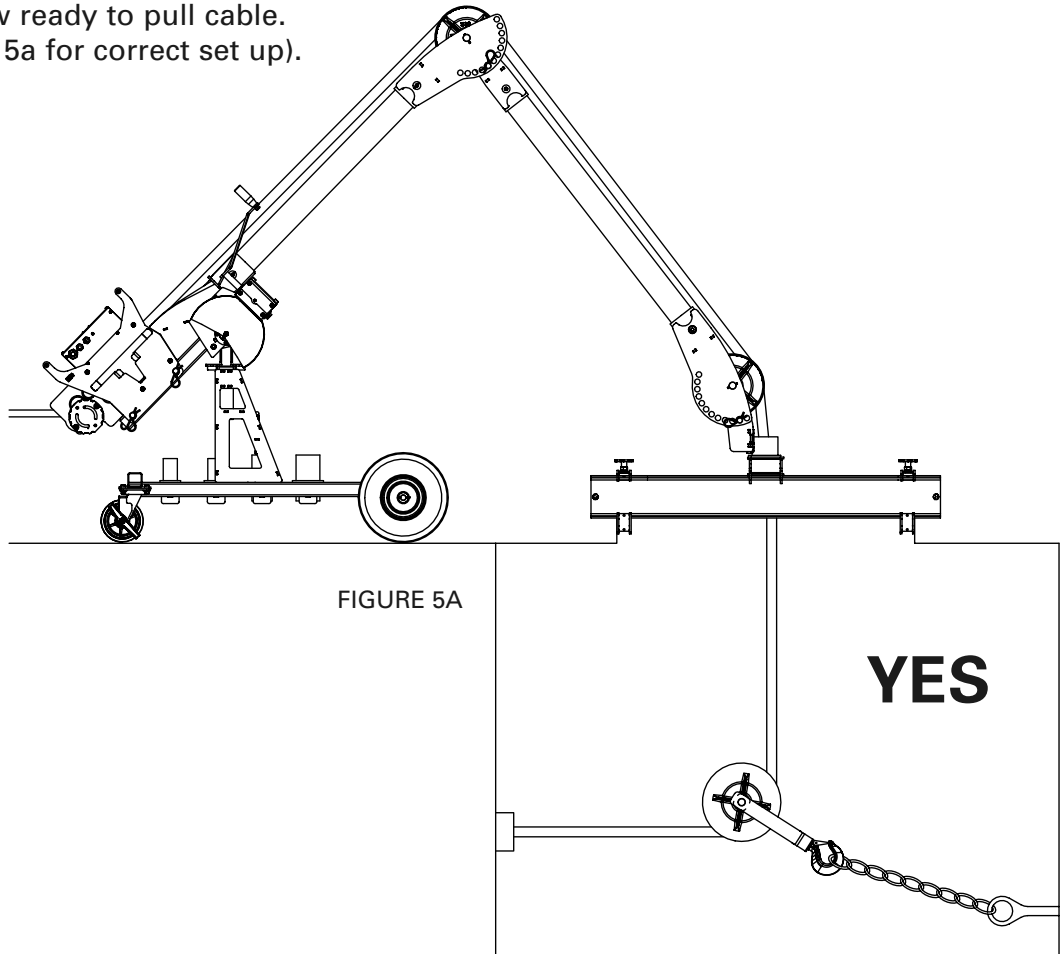
FIG. 4C

*Insert the slip-in coupling into the coupling receiver (puller not shown)*

**NOTE: The 4" coupling receiver is standard. A 6" coupling receiver is offered as an option.**

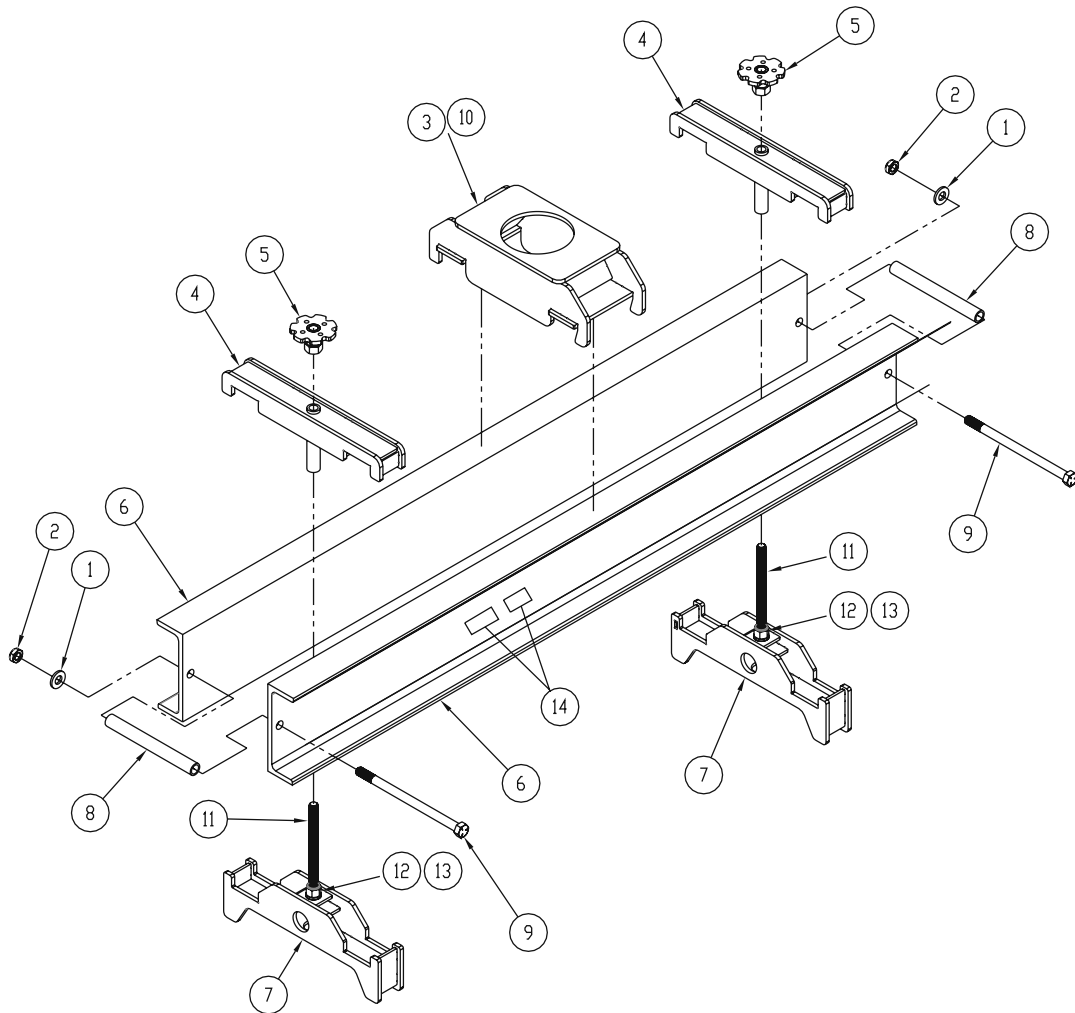
## OPERATING INSTRUCTIONS

6. You are now ready to pull cable.  
(See Figure 5a for correct set up).



**NOTE:** The coupling receiver should always be positioned to avoid pulling the rope and conductors across any edges.

# EXPLODED VIEW



# PARTS LIST

ITEM #	PART#	DESCRIPTION	QTY.
1	77-017A	WASHER – FLAT SAE ZINC (1/2)	2
2	281-1J	NUT – HEX, 1/2–13 THIN (NYL INS)	2
3	320-108	4" COUPLING RECEIVER – STD.	1
4	320-116	CLAMP, TOP	2
5	320-118	KNOB	2
6	320-120	FRAME SIDE	2
7	320-109	CLAMP, BOTTOM ASSEMBLY	2
8	320-127	FRAME SPACER	2
9	12048-4	SCREW – HEX HEAD CAP (1/2–13 x 8)	2
10	320-104	6" COUPLING RECEIVER (OPTIONAL)	1
11	320-001	BOLT – CARRIAGE (1/2–13 x 7)	2
12	333-7	NUT – HEX, NYL. INS. (1/2–13)	2
13	281-2C	WASHER – LOCK	2
14	320-DECALSET	DECAL SET – MODEL # / CAPACITY, UPC	1