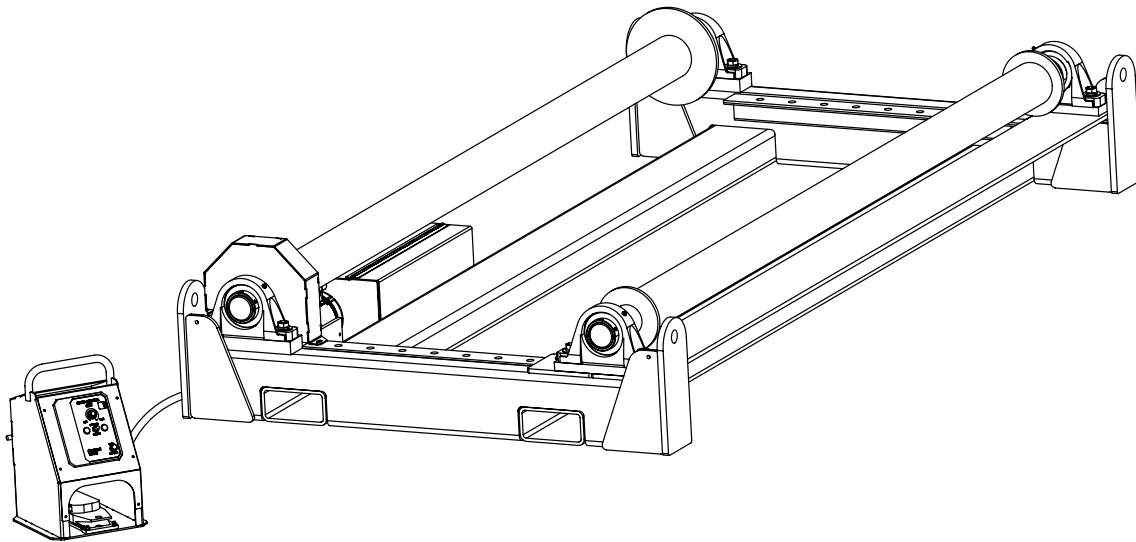




# **Current Tools**

**FOR THE PROFESSIONAL ELECTRICIAN**

## **Model 615 Cable Reel Roller with VFD**



## **Operating, Maintenance, Safety and Parts Manual**

08/24



**Read and understand this material before operating or servicing the Cable Reel Roller. Failure to understand how to safely operate and service this unit may result in serious injury or death.**

This manual is free of charge. All personnel who operate the Cable Reel Roller should have a copy of this manual and read and understand its contents. To request a copy, call or write to the address below. All information, specifications and product designs may change due to design improvements or updates and are subject to change without notice. Current Tools does not assume any liability for damages resulting from misuse or incorrect application of its products.

**CURRENTTOOLS • P. O. BOX 17026 GREENVILLE, SC 29606  
800.230.5421 or 864-721-4230 • FAX 864-721-4232  
www.currenttools.com**



# TABLE OF CONTENTS

<b>Safety Alerts</b> .....	<b>2</b>
<b>Specifications &amp; Features</b> .....	<b>3</b>
<b>Operating Instructions</b> .....	<b>3</b>
<b>Remote Control Pedestal</b> .....	<b>4</b>
<b>Maintenance</b> .....	<b>4</b>
<b>Roller Position Chart</b> .....	<b>5</b>
<b>Exploded View — Frame and Rollers</b> .....	<b>6</b>
<b>Parts List — Frame and Rollers</b> .....	<b>7</b>
<b>Exploded View — Motor/Gearbox Mount</b> .....	<b>8</b>
<b>Exploded View and Parts List — Motor Assembly</b> .....	<b>9</b>
<b>Exploded View and Parts List — Remote Pedestal (Front)</b> .....	<b>10</b>
<b>Exploded View and Parts List — Remote Pedestal (Back)</b> .....	<b>11</b>

## SAFETY INFORMATION



This manual should be read and understood by all personnel who operate or service this Cable Reel Roller. Failure to understand how to operate and service this equipment could result in injury or death. This Cable Reel Roller should only be operated by qualified personnel.

- ALWAYS place the cable reel roller on a firm, level surface. Be sure the surface is capable of supporting the full load of the cable reel roller and the reel of cable.
- ALWAYS remove reel of cable before moving or transporting the cable reel roller.
- ALWAYS lift the cable reel roller using forklift pockets or by lifting eyes provided at each corner of the unit.
- NEVER attempt to lift the cable reel roller by the rollers.
- DO NOT operate or store the cable reel roller in wet or damp locations.  
DO NOT EXPOSE TO RAIN.
- Only use this unit for its intended purpose as a cable reel roller.
- DO NOT exceed load rating of the cable reel roller.
- ALWAYS inspect the cable reel roller before each use.
- DO NOT operate in explosive atmosphere.
- ALWAYS disconnect the cable reel roller before servicing.
- ALWAYS plug into grounded receptacle that is GFCI protected.
- KEEP all body parts, hair, loose clothing, etc., away from rotating parts and pinch points.
- DO NOT alter this cable reel roller. Doing so will void the warranty. Guards and safety features are provided for your protection.
- DO NOT use extension cord longer than 100 ft. Extension cord should be 12 gauge wire with ground.
- When operating, operator should stand to the side of the cable reel roller and out of the path of the cable.
- ALWAYS remove the remote control pedestal from its storage location before operating the Reel Roller.
- ALWAYS secure the remote control pedestal in its storage location prior to moving the Reel Roller.

## SPECIFICATIONS

**width** — 122"

**length** — 60<sup>3</sup>/<sub>4</sub>"

**height** — 19"

**weight** — 2,800 lbs.

**maximum reel size** — 8' diameter  
96" width, 15 tons

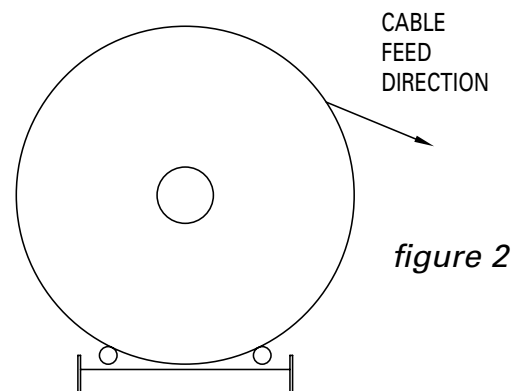
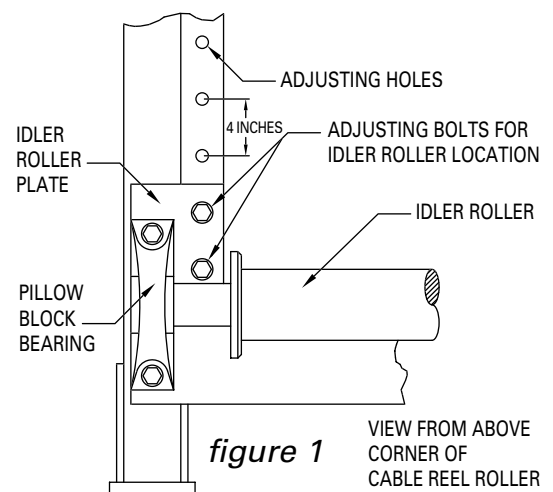
**power requirement** — 115 volts, 20 amps

## FEATURES

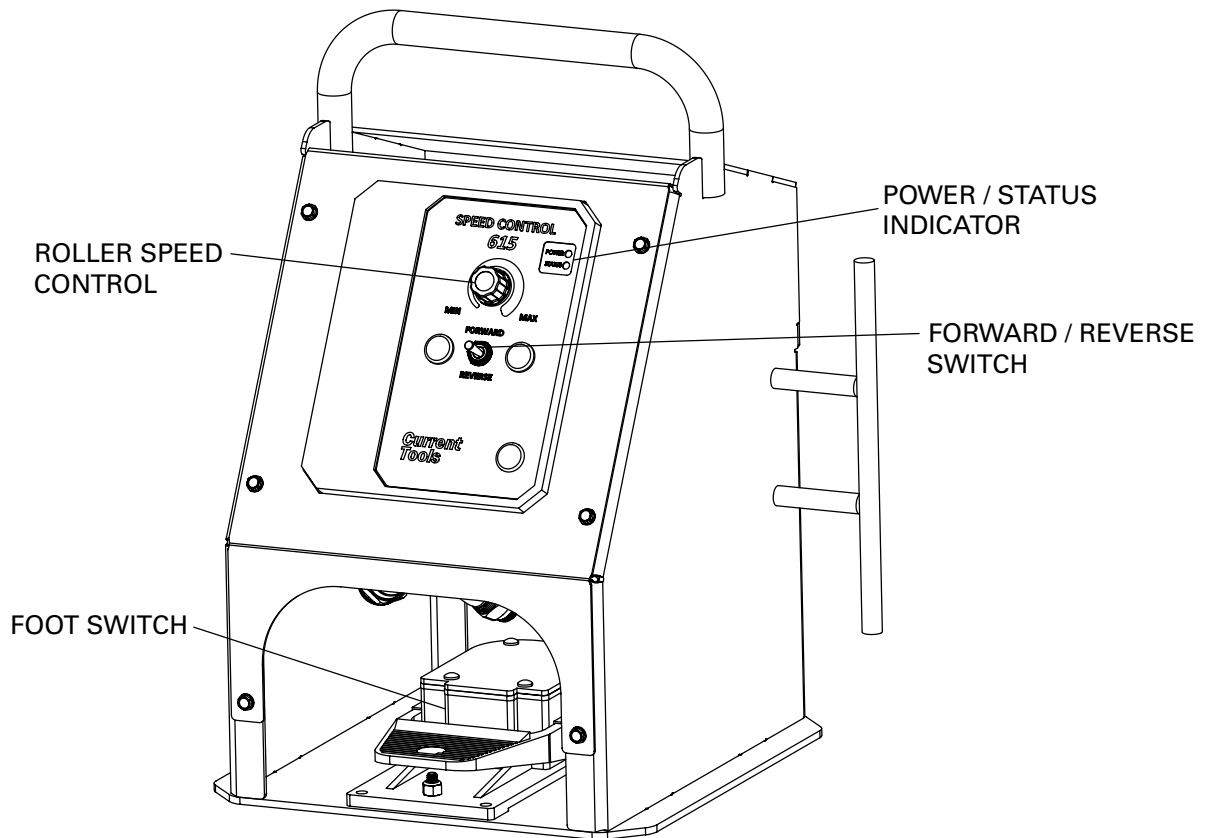
- Heavy duty welded frame for strength and durability
- Heavy duty self-aligning pillow block bearings
- Remote control pedestal can be easily disconnected for safe storage
- Speed control for variable cable feeding rates
- One roller adjusts to accommodate various reel sizes
- On/off foot control for remote operation
- Rugged and durable drive motor
- Convenient forklift pockets on both sides of unit for quick transport with forklift

## OPERATING INSTRUCTIONS

1. Move the cable reel roller into position for operation using the forklift pockets on the sides of the unit, or by the lifting eyes provided at each corner of the unit.
2. Locate the cable reel roller on a surface capable of supporting the combined weight of the unit plus the reel of cable.
3. Adjust the distance between the rollers. (See Idler Roller Position Chart on pg. 5) Remove the four adjusting bolts (2 each side) connecting the idler roller plate to the reel roller base. Slide the idler roller assembly to the desired position and replace the 4 bolts. *See figure 1.*
4. Load the cable reel onto the cable reel roller such that the cable feeds from the top of the reel. *See figure 2.*
5. Remove the remote control pedestal from its storage location and place it so that the operator is clear of the unwinding cable.
6. Use the remote control pedestal to set forward or reverse as required, and to adjust the operating speed of the roller.
7. After making the adjustments on the remote control pedestal, use the foot control to switch the unit off and on remotely.

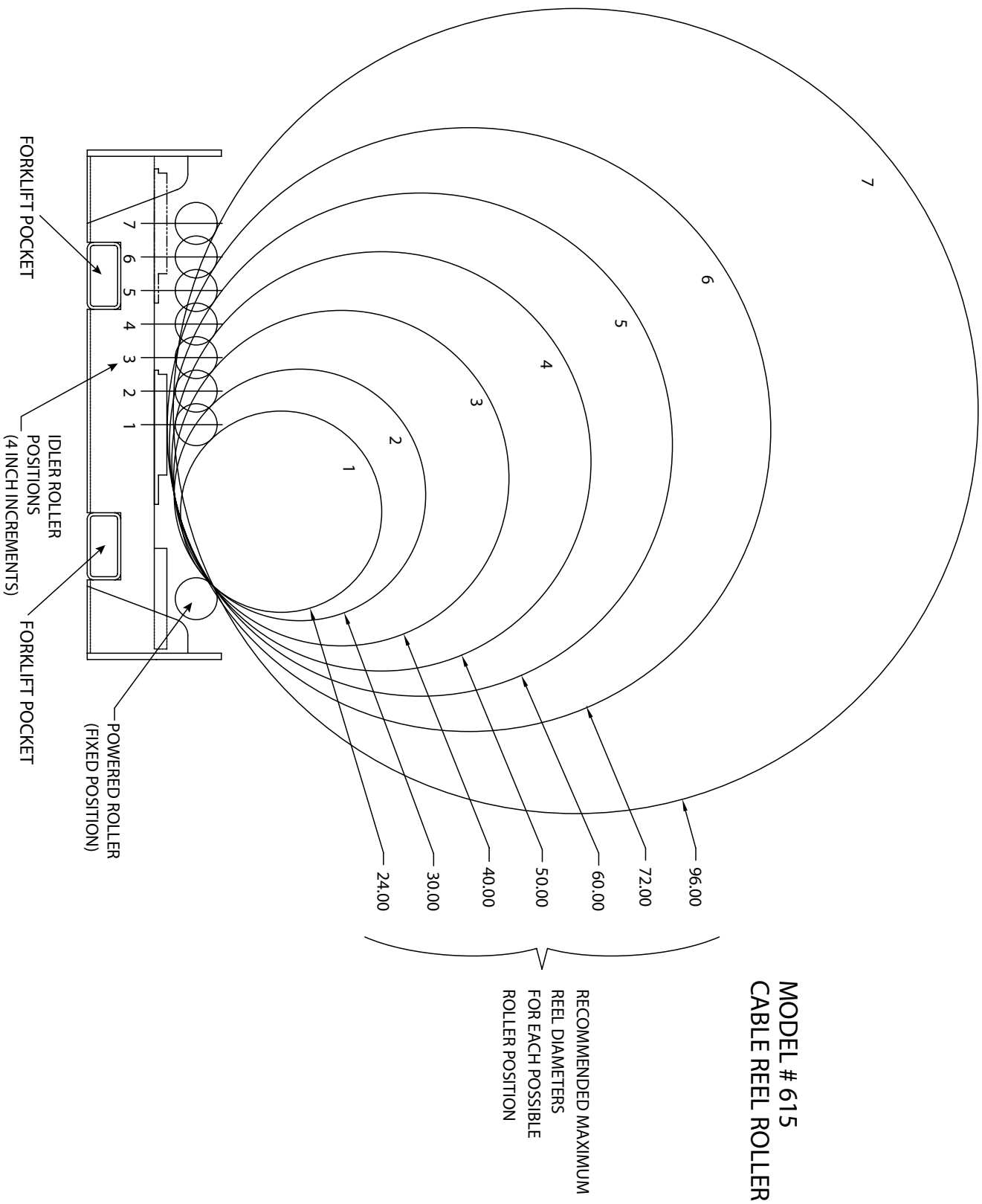


## REMOTE CONTROL PEDESTAL



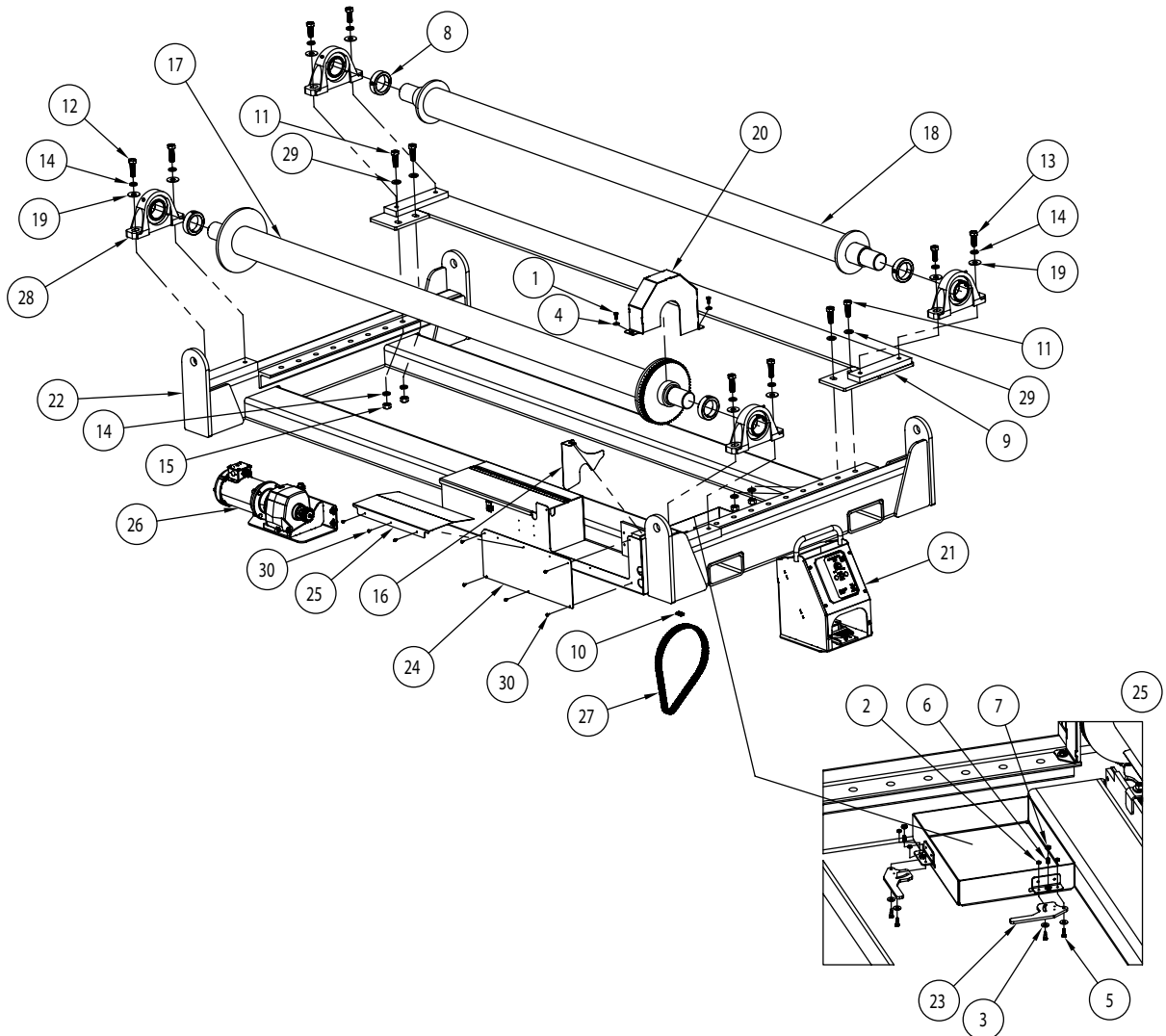
## MAINTENANCE

- DO NOT store the cable reel roller in wet or damp locations.
- Grease the pillow block bearings every 20 hours of operation with a good quality multi-purpose (MP) grease.
- Lubricate drive chain every 20 hours of operation with 90W gear oil.
- Before each use, inspect power and control cords for damage.
- Inspect drive chain for wear every 40 hours of operation.





# EXPLODED VIEW — MODEL 615 FRAME AND ROLLERS



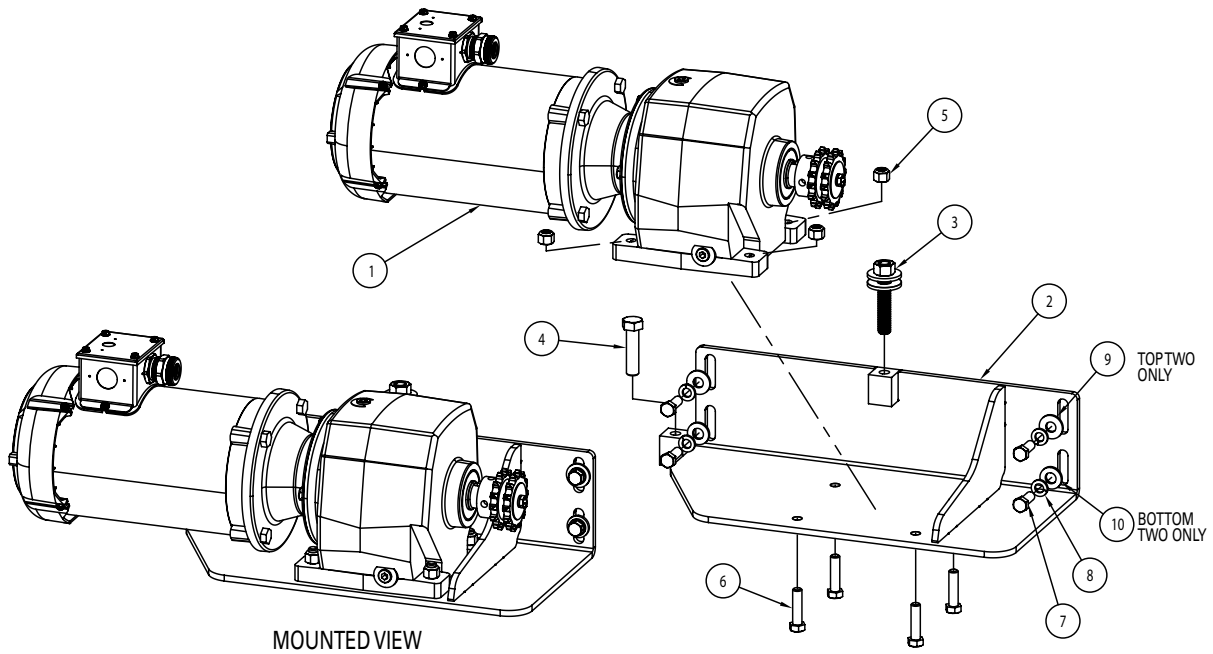
REMOTE CONTROL PEDESTAL  
STORAGE TRAY



## PARTS LIST – MODEL 615 FRAME AND ROLLERS

ITEM NO.	PART NUMBER	DESCRIPTION	QTY.
1	33-53	SCREW-HEX HEAD CAP GR5 ZINC (3/8-16 X3/4)	2
2	33BAT-005	NUT- HEX NYLON INSERT THIN (#10-24)	4
3	450-14I	WASHER-FLAT ZINC 1/4"(USS)	4
4	506-3	WASHER-FLAT 3/8 (USS) ZINC	2
5	615-024	SCREW - SHOULDER SOCKET (1/4" X 5/16")	4
6	615-025	SPRING BALL NOSE PLUNGER - 5/16-18	2
7	615-026	NUT-HEX JAM ZINC (5/16-18)	2
8	615-17	SHAFT COLLAR	4
9	615-209	SLIDE PLATE-615 REEL ROLLER	1
10	615-25A	MASTER LINK, D40	1
11	615-2F	SCREW-HEX HEAD CAP GR5 ZINC (3/4-10 X 2.25)	4
12	615-2G	SCREW-HEX HEAD CAP GR5 ZINC (3/4-10 X 2.5)	4
13	615-2H	SCREW-HEX HEAD CAP GR5 ZINC (3/4-10 X 2)	4
14	615-2I	WASHER, LOCK 3/4"	12
15	615-2J	NUT-HEX ZINC (3/4-10)	4
16	615-307 BENT	CHAIN SHIELD	1
17	615-488A	DRIVE ROLLER	1
18	615-488B	IDLER ROLLER	1
19	615-4B	WELD WASHER	8
20	615-500	CHAIN GUARD- 615 REEL ROLLER	1
21	615-600	REMOTE CONTROL PEDESTAL	1
22	615-630	FRAME	1
23	615-636	LOCKING HANDLE	2
24	615-637	MOTOR COVER PLATE	1
25	615-639 BENT	SHIELD	1
26	615-640	MOTOR REPLACEMENT KIT - VFD (EXPLODED VIEW PG. 8)	1
27	615-647	CHAIN - DOUBLE 40	1
28	615-9	PILLOW BLOCK BEARING	4
29	77-017	WASHER-FLAT 3/4" (SAE)	4
30	77-033A	SCREW-HEX HEAD SELF DRILL ZINC (#10-32 X 1/2)	5

## EXPLODED VIEW — 615-640 MOTOR REPLACEMENT KIT

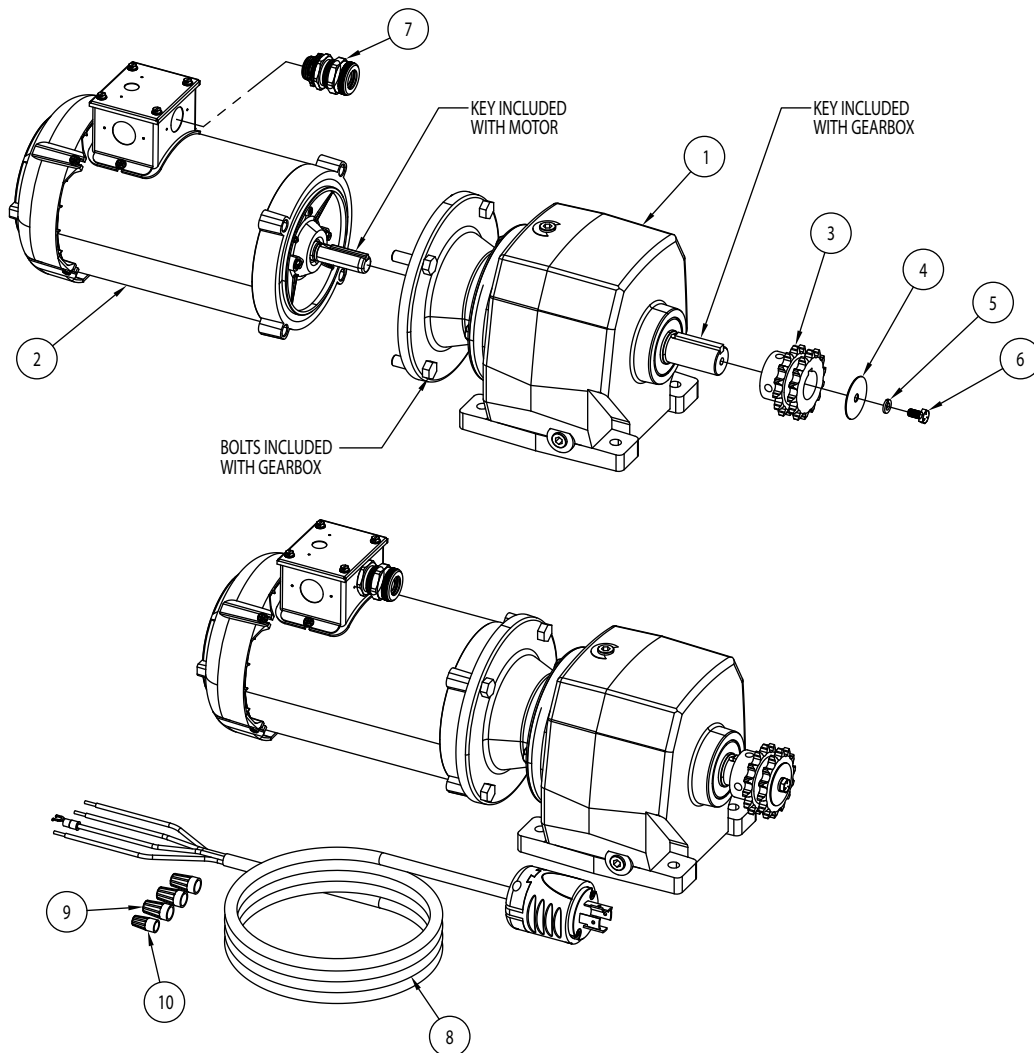


## PARTS LIST — 615-640 MOTOR REPLACEMENT KIT

ITEM NO.	PART NUMBER	DESCRIPTION	QTY.
1	615-644	MOTOR/GEARBOX ASSEMBLY - VFD	1
2	615-650	MOTOR MOUNT - VFD	1
3	615-156	JACK SCREW-615 DRIVE	1
4	615-33	SCREW-HEX HEAD CAP GR5 ZINC (1/2"-13 X 2)	1
5	2-1501-4	NUT-HEX NYLON INSERT (3/8-16)	4
6	754-015	SCREW-HEX HEAD CAP GR5 ZINC (3/8-16 X 1.5)	4
7	524-11	3/8-16 X 1.0" HEX HEAD SCREW	4
8	452-27	WASHER-LOCK MEDIUM 3/8 ZINC	4
9	506-3	WASHER-FLAT 3/8 (USS) ZINC	2
10	615-29D	WASHER - OVERSIZE ZINC	2



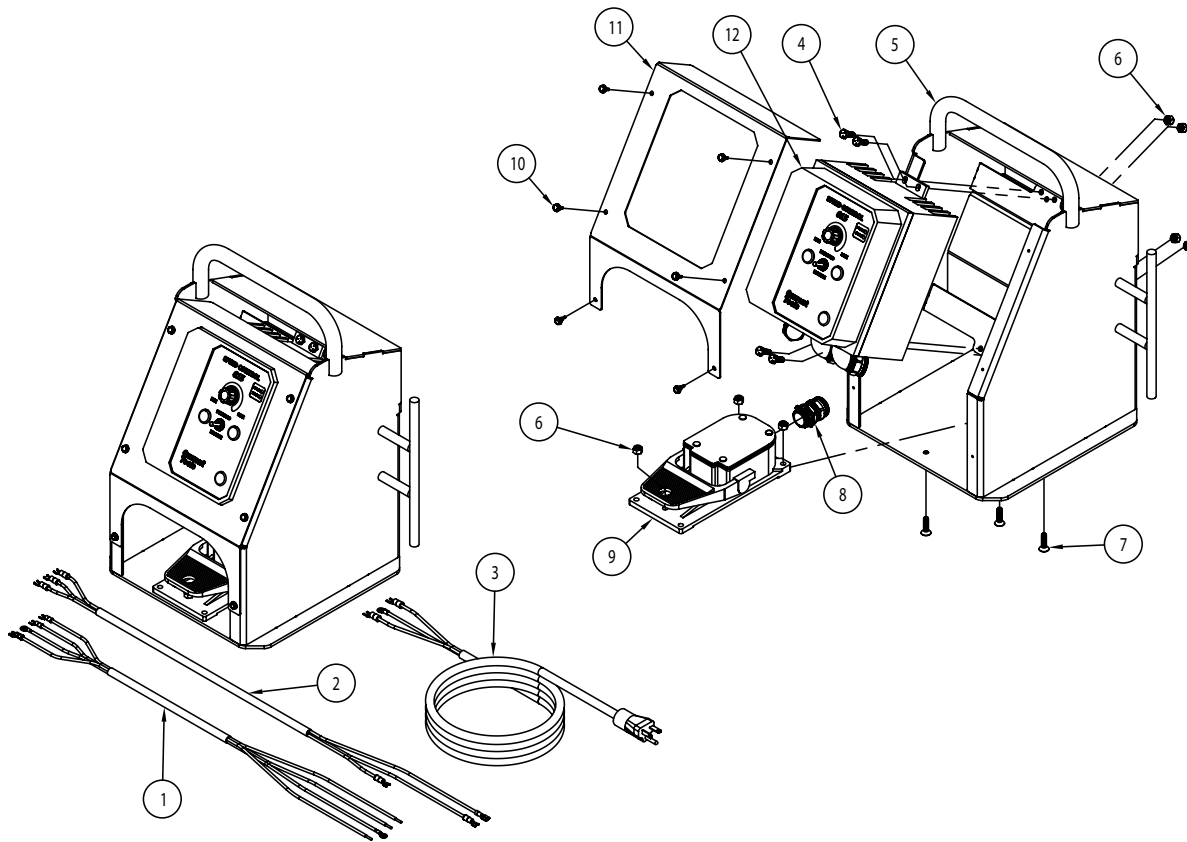
## EXPLODED VIEW — 615-644 MOTOR ASSEMBLY



## PARTS LIST — 615-644 MOTOR ASSEMBLY

ITEM NO.	PART NUMBER	DESCRIPTION	QTY.
1	615-642	GEARBOX	1
2	615-641	MOTOR	1
3	615-643	SPROCKET - D40B14	1
4	615-016	.281" X 1.50D FENDER WASHER	1
5	450-14G	WASHER-LOCK 1/4	1
6	615-015	SCREW-HEX HEAD CAP GR5 ZINC (1/4-28 X 1/2")	1
7	615-014	CORD GRIP	1
8	615-646	MOTOR POWER LEAD ASSY	1
9	453-25	WIRE NUT - YELLOW	3
10	615-028	WIRE NUT - ORANGE	1

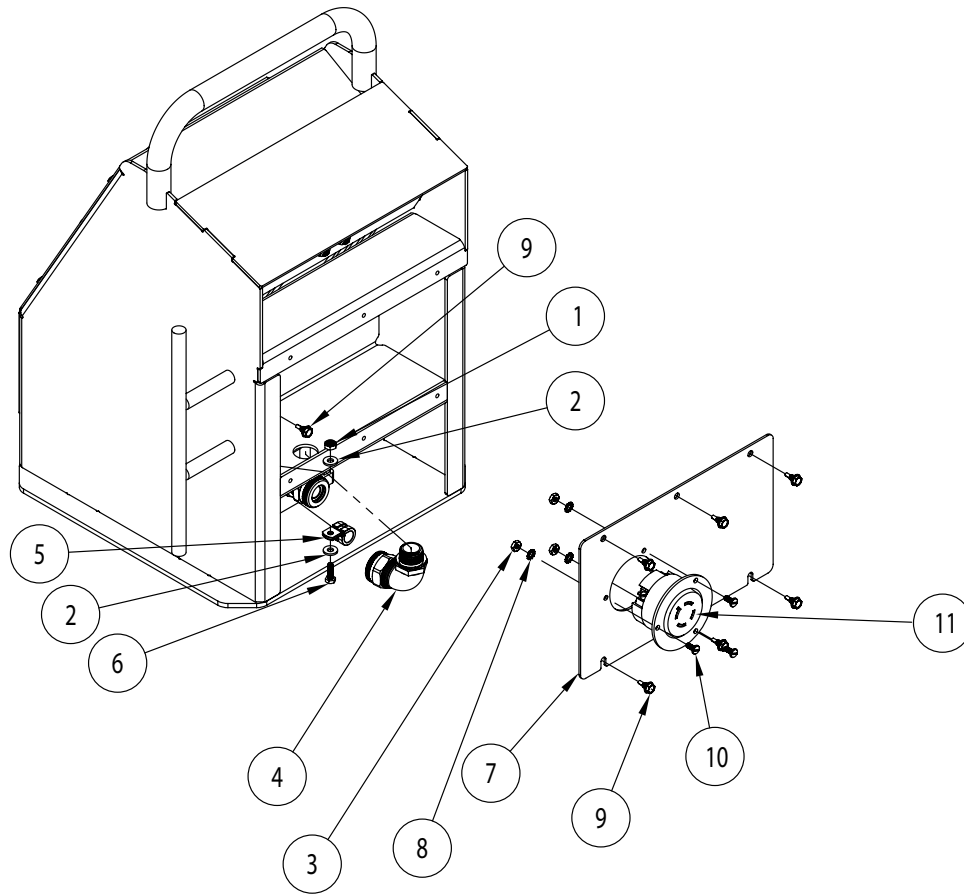
## EXPLODED VIEW — REMOTE PEDESTAL (FRONT)



## PARTS LIST — REMOTE PEDESTAL (FRONT)

ITEM NO.	PART NUMBER	DESCRIPTION	QTY.
1	615-626	SOCKET CABLE ASM	1
2	615-616	FOOT CONTROL CORD ASM	1
3	615-619	POWER CORD ASSEMBLY	1
4	450-1A	1/4-20 X .75 HHCS	4
5	615-624	CONTROL PEDESTAL HOUSING	1
6	9518SR-12	NUT-HEX NYLON INSERT (1/4-20)	12
7	615-013	SCREW-FLAT SOCKET (1/4-20 X 1")	4
8	615-012	CORD GRIP	1
9	615-011	FOOT CONTROL	1
10	77-033A	SCREW-HEX HEAD (#10-32 x 1/2)	12
11	615-612 BENT	CONTROL PEDESTAL COVER	1
12	615-613	VFD ASSEMBLY	1
13	615-020	FUSE — 25A (INTERNAL — NOT SHOWN)	1

## EXPLODED VIEW — REMOTE PEDESTAL (BACK)



## PARTS LIST — REMOTE PEDESTAL (BACK)

ITEM NO.	PART NUMBER	DESCRIPTION	QTY.
1	33BAT-005	NUT- HEX NYLON INSERT THIN (#10-24)	1
2	450-14J	WASHER-FLAT SAE #10	2
3	453-16A	NUT-HEX ZINC (#8-32)	3
4	615-010	CORD GRIP	1
5	615-019	CORD CLAMP	1
6	615-029	SCREW - HEX HEAD CAP ZINC (#10-24 X 5/8")	1
7	615-622	COVER - ELECTRICAL	1
8	747-39	WASHER, LOCK - #8 EXT. TOOTH	3
9	77-033A	SCREW-HEX HEAD (#10-32 x 1/2)	12
10	77-053	SCREW-PAN HEAD SLOT (8-32 X 3/8)	3
11	615-043	MOTOR SOCKET	1