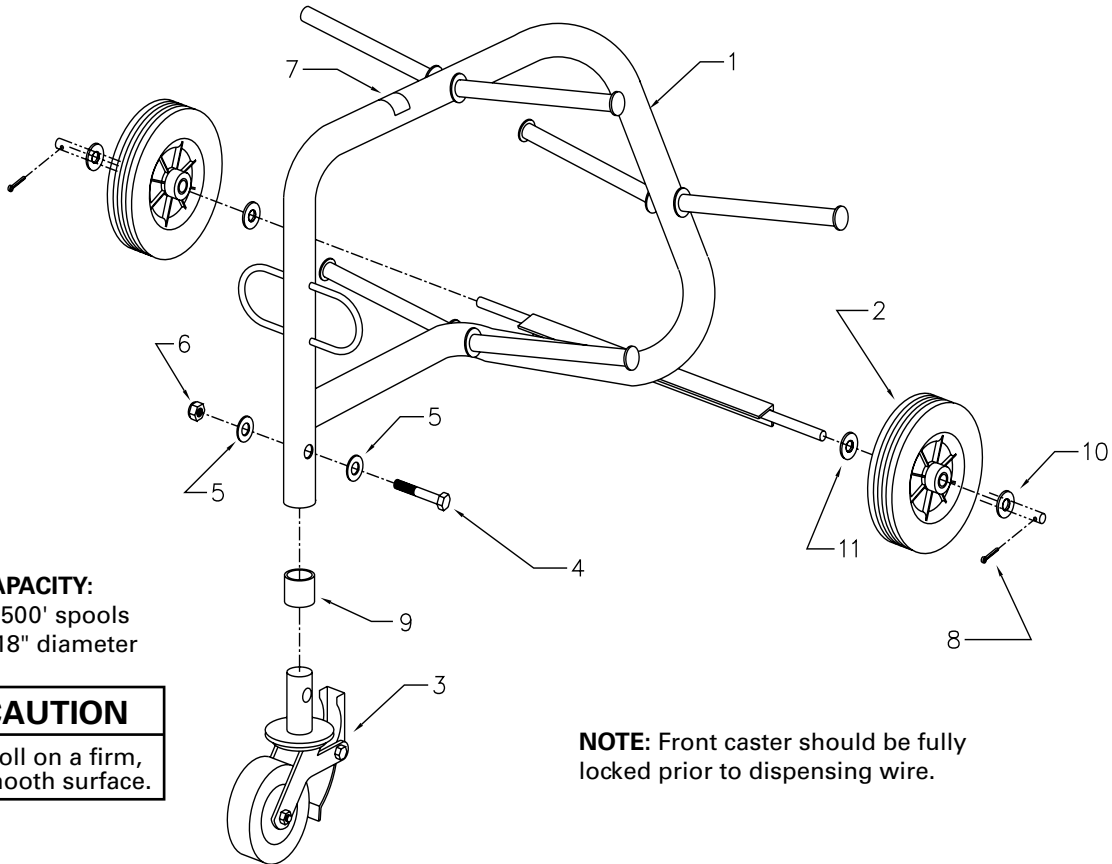


## Model 502 Turtle Cart



**CAPACITY:**  
6 – 2500' spools  
up to 18" diameter

**CAUTION**  
Only roll on a firm,  
flat, smooth surface.

**NOTE:** Front caster should be fully  
locked prior to dispensing wire.

## INSTRUCTION SHEET AND PARTS LIST

PARTS LIST — 502 TURTLE CART			
ITEM#	PART#	QTY	DESCRIPTION
1	502-248	1	FRAME
2	502-3	2	WHEEL, SEMI-PNEUMATIC
3	636-2	1	CASTER
4	281-1E	1	SCREW, HEX HEAD CAP, 1/2-13x3"
5	77-017A	2	WASHER, FLAT — 1/2
6	333-7	1	NUT, HEX, 1/2-13 NYLON INSERT
7	502-5	1	DECAL
8	501-14	2	COTTER PIN, 1/8"x1 1/4"
9	502-15	1	SPACER TUBE
10	77-017	2	WASHER, FLAT — 3/4
11	9224-103	2	SPACER

07/2023

**Read and understand this material before operating the Turtle Cart. Failure to understand how to safely operate this cart may result in injury or property damage.**

*This manual is free of charge. All personnel who operate the Turtle Cart should have a copy of this manual and read and understand its contents. To request a copy, call or write to the address below. All information, specifications and product designs may change due to design improvements or updates and are subject to change without notice. Current Tools does not assume any liability for damages resulting from misuse or incorrect application of its products.*