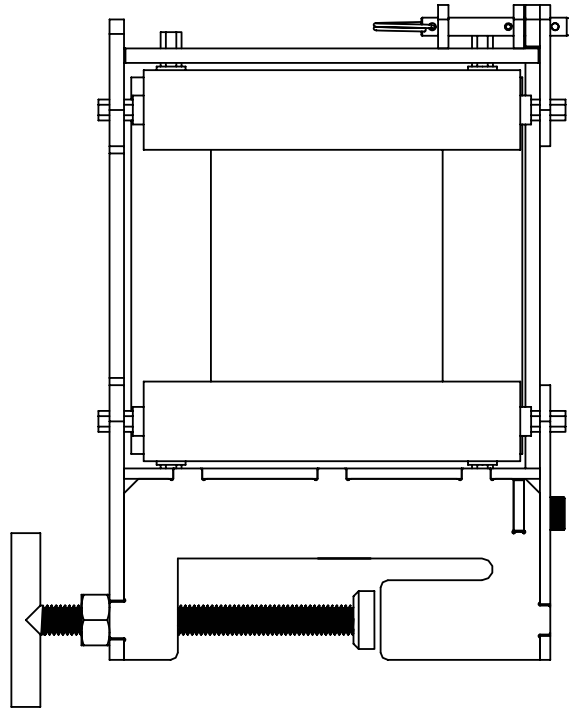




Current Tools

FOR THE PROFESSIONAL ELECTRICIAN

Model 9544 Four-Sided Roller with Clamp



Instruction Sheet

10/18



Read and understand this material before installing or using the Four-Sided Roller. Failure to understand how to safely install and use this unit could result in serious injury or death.

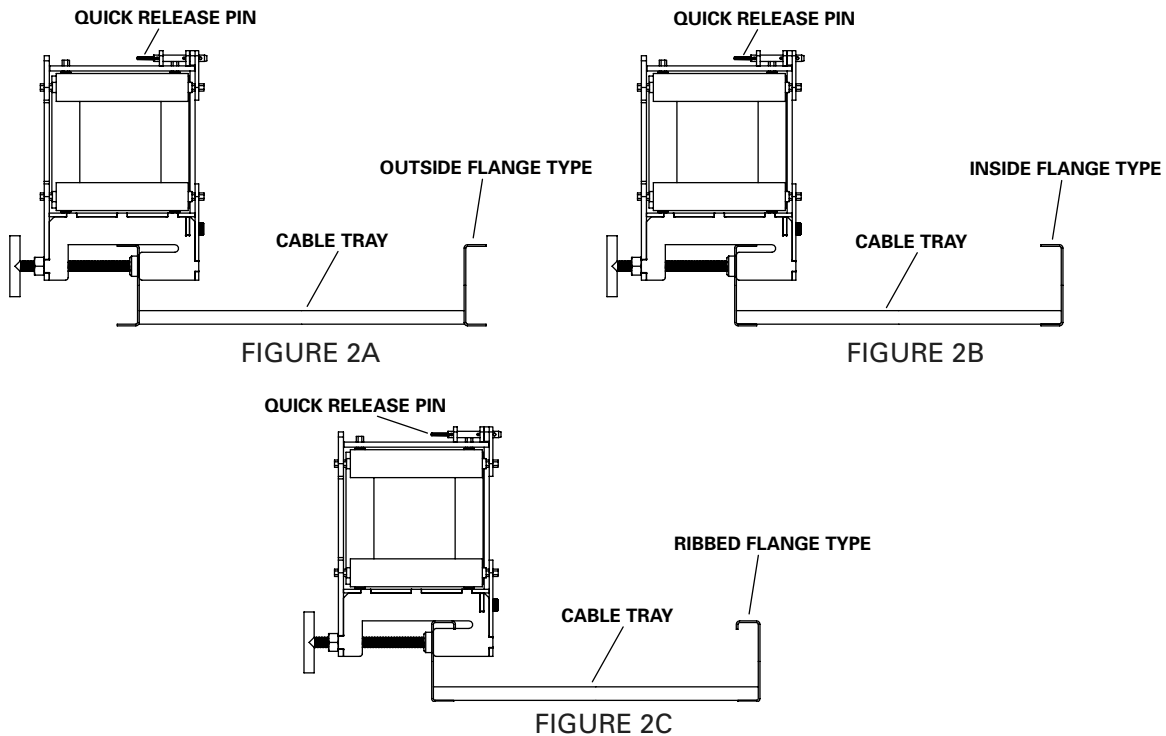
This manual is free of charge. All personnel who install or use the Four-Sided Roller should have a copy of this manual and read and understand its contents. To request a copy, call or write to the address below. All information, specifications and product designs may change due to design improvements or updates and are subject to change without notice. Current Tools does not assume any liability for damages resulting from misuse or incorrect application of its products.

CURRENT TOOLS • P. O. BOX 17026 GREENVILLE, SC 29606
800.230.5421 or 864-721-4230 • FAX 864-721-4232
www.currenttools.com

SPECIFICATIONS

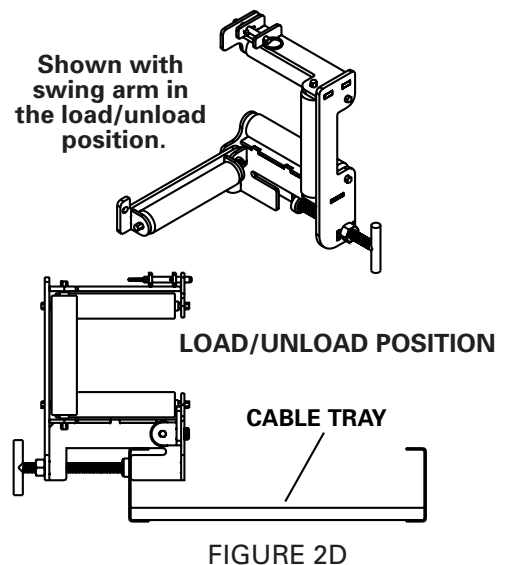
Model No.	9544
Opening Size	4"
Capacity	100 lbs.
Weight	10 lbs.

TYPICAL CLAMPING ARRANGEMENTS

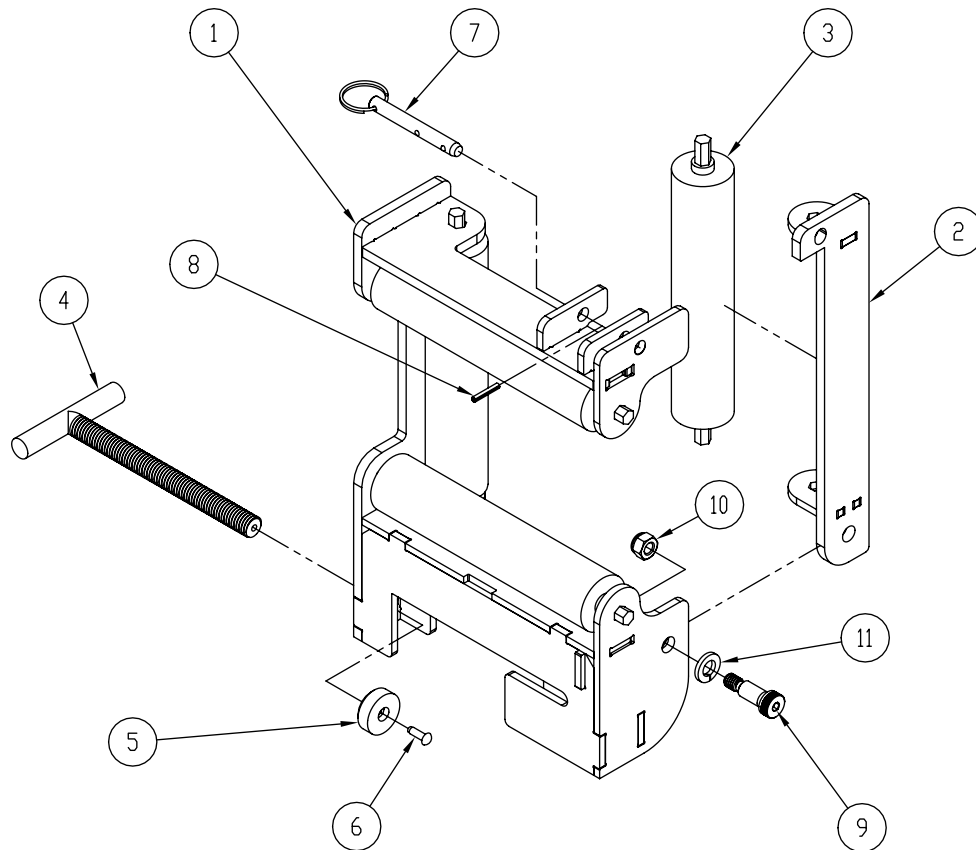


OPERATING INSTRUCTIONS

1. Firmly attach the four-sided roller to cable tray using the clamp provided. Position the 4 sided roller so that it opens to the inside of the cable tray. (See Figures 2A thru 2C).
2. Pull the quick release pin and lower the swing arm to load cable (See Figure 2D). Raise the swing arm and fully re-insert the quick release pin before beginning the pull.
3. After the pull is complete, pull the quick release pin and lower the swing arm. Unload the cable into the cable tray (See Figure 2D). Raise the swing arm and fully re-insert the quick release pin.



EXPLODED VIEW — 9544 FOUR-SIDED ROLLER



PARTS LIST

ITEM#	PART #	QTY	DESCRIPTION
1	9544-124.....	1	FRAME – ROLLER
2	9544-127.....	1	SWING ARM – ROLLER
3	9544-003.....	4	ROLLER
4	9548-743.....	1	T-SCREW – CLAMP
5	9548-709.....	1	END – CLAMP
6	9548-2.....	1	SCREW – U-DRIVE
7	9544-005.....	1	PIN – QUICK RELEASE
8	77-035A	1	PIN – ROLL, 1/8 × 3/4
9	77HRB-001.....	1	SCREW – SHOULDER SKT, 3/8 × 3/4
10	2-1301-4.....	1	NUT-HEX, NYLON INSERT, 5/16–18
11	452-27.....	1	WASHER – LOCK, 3/8