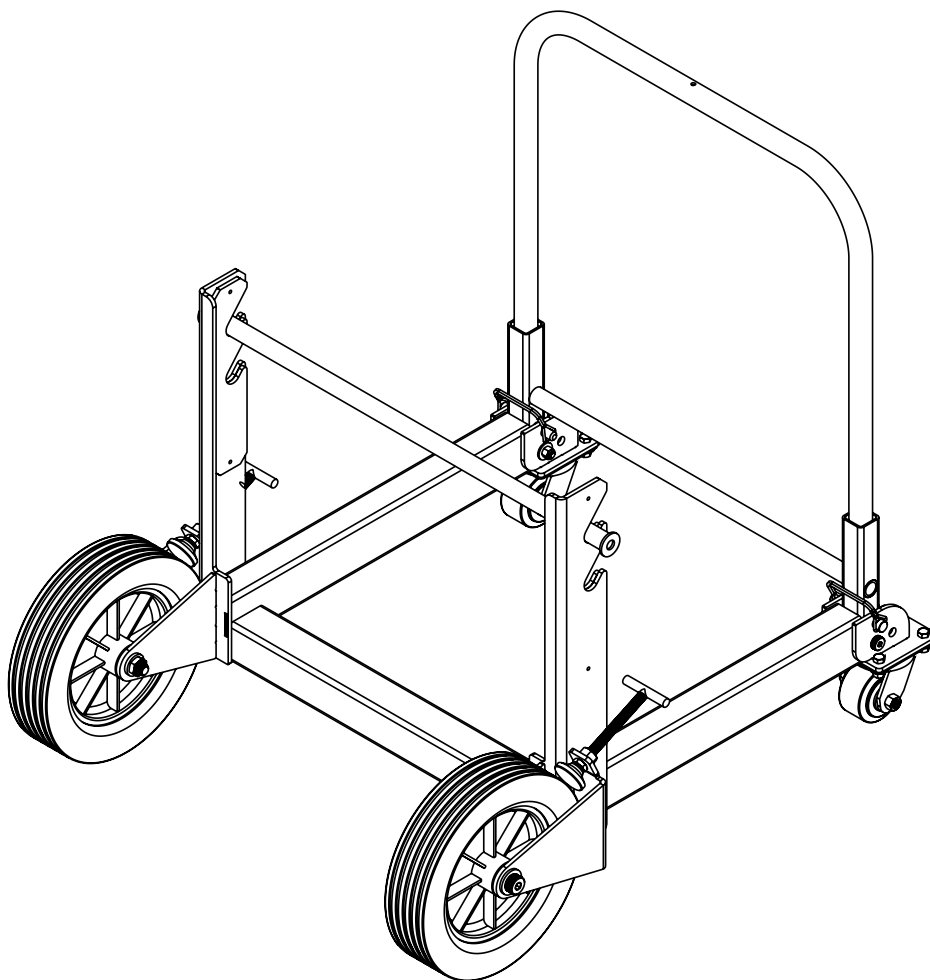




# ***Current Tools***

**FOR THE PROFESSIONAL ELECTRICIAN**

## **Model 518 Convertible Cart**



## **INSTRUCTION SHEET AND PARTS LIST**

01/2025



**Read and understand this material before operating the Convertible Cart. Failure to understand how to safely operate this Convertible Cart may result in injury or property damage.**

This manual is free of charge. All personnel who operate the Convertible Cart should have a copy of this manual and read and understand its contents. To request a copy, call, write to the address below or visit our website. All information, specifications and product designs may change due to design improvements or updates and are subject to change without notice. Current Tools does not assume any liability for damages resulting from misuse or incorrect application of its products.

**CURRENT TOOLS • P. O. BOX 17026 GREENVILLE, SC 29606**  
**800.230.5421 or 864.721.4230 • FAX 864.721.4232 • [www.currenttools.com](http://www.currenttools.com)**

## RETAIN SAFETY INFORMATION



This manual should be read and understood by all personnel who operate or service this Convertible Cart. Failure to understand how to operate and service this equipment could result in injury or death. This unit should only be operated by qualified personnel.



## IMPORTANT SAFETY INFORMATION

- ALWAYS set convertible cart on a firm, level surface.
- ONLY roll on a firm, flat, smooth surface.
- NEVER stand in front of the cart (payout direction) while dispensing.
- ALWAYS have control of the reel when loading or unloading.
- Keep the area free of personnel who are NOT involved with the loading, unloading, or dispensing process.
- ALWAYS engage both wheel stops and dispense from the bottom of the reel and away from the handle.  
(See Figure 1).
- DO NOT attempt to dispense cable from reels that are damaged. Reels that are damaged may fail to roll freely and can be pulled off the cart or cause the cart to flip.
- DO NOT exceed the rated capacity of the cart.
- ALWAYS ensure the reel turns freely while dispensing. If the reel stops turning, discontinue the pull and determine cause.

### ! WARNING !

ALWAYS engage both wheel stops and dispense from the bottom of the reel and away from the handle

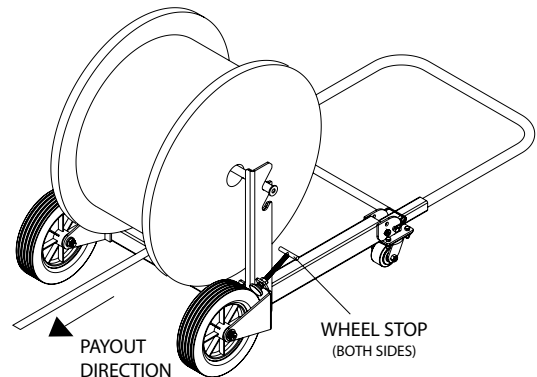


FIGURE 1



## SPECIFICATIONS

<b>Model No.</b>	<b>518</b>
<b>Overall Dimensions</b>	<b>65"L x 33½"W x 36"H</b>
<b>Weight Capacity</b>	<b>500 lbs</b>
<b>Maximum Reel Width</b>	<b>24"</b>
<b>Maximum Reel Diameter</b>	<b>30"</b>
<b>Weight</b>	<b>112 lbs.</b>

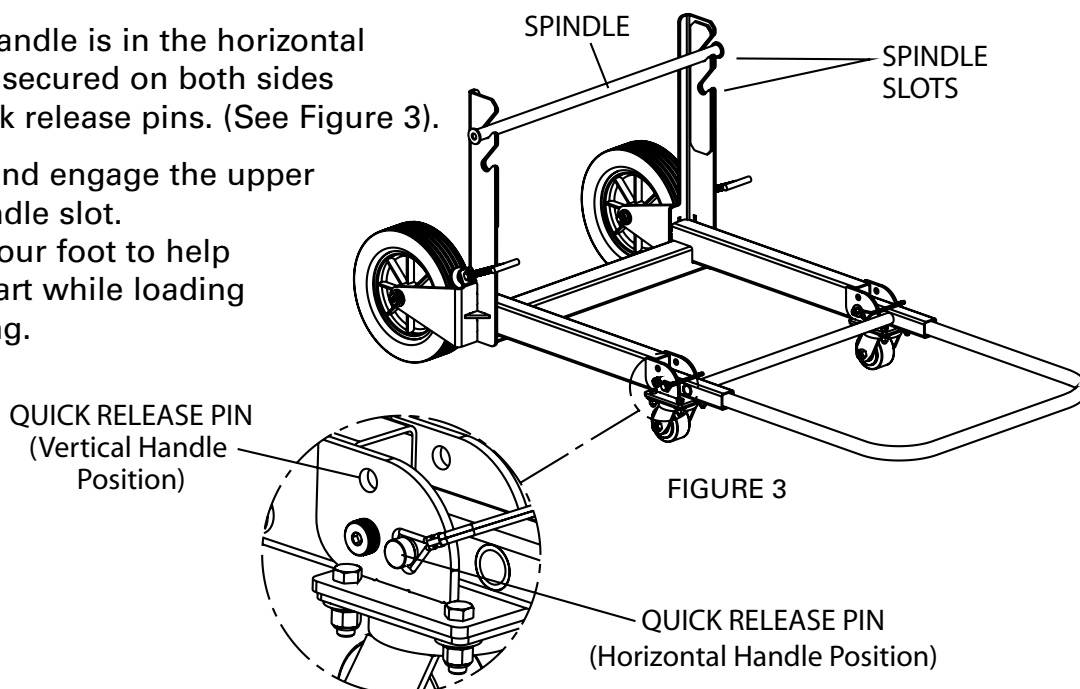
# OPERATING INSTRUCTIONS

## TO LOAD REEL ONTO THE CART

- 1) Insert the spindle through the center of the reel.
- 2) Ensure the handle is in the horizontal position and secured on both sides with the quick release pins. (See Figure 3).

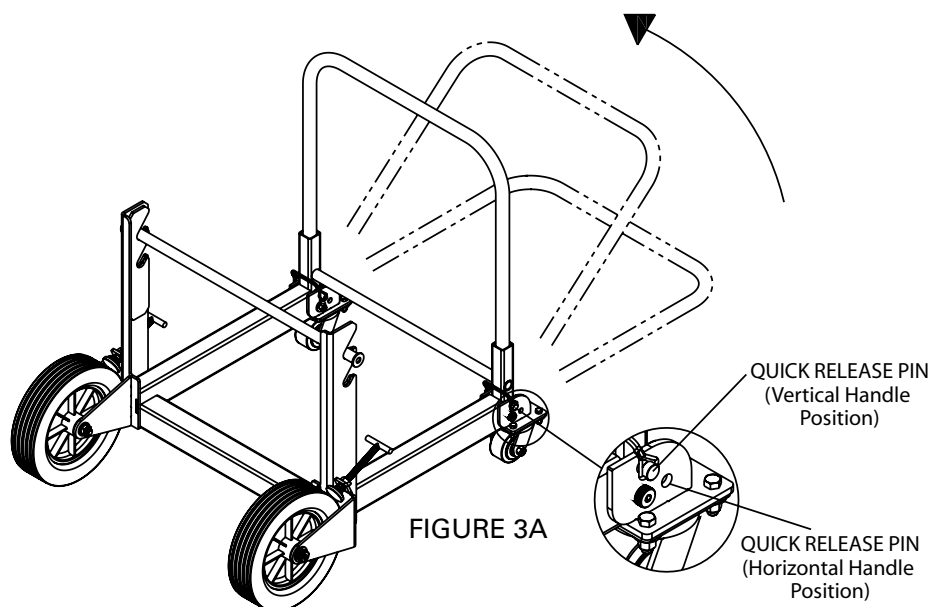
- 3) Lift the cart and engage the upper or lower spindle slot.

NOTE: Use your foot to help control the cart while loading and unloading.



## TO USE AS A 4 WHEEL CART

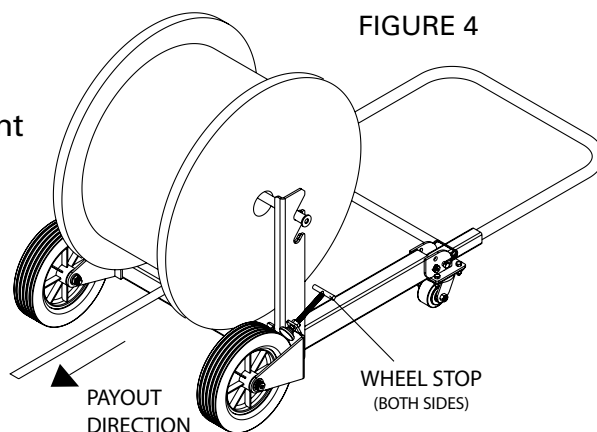
- 4) Lift the reel and continue to lower the handle until all four wheels are on the floor.
- 5) Remove the quick release pins and lift the handle to the vertical position. Install the quick release pins to secure the handle in the vertical position. (See Figure 3A).
- 6) Use the handle to push the cart and transport the reel.



## **OPERATING INSTRUCTIONS — CONTINUED**

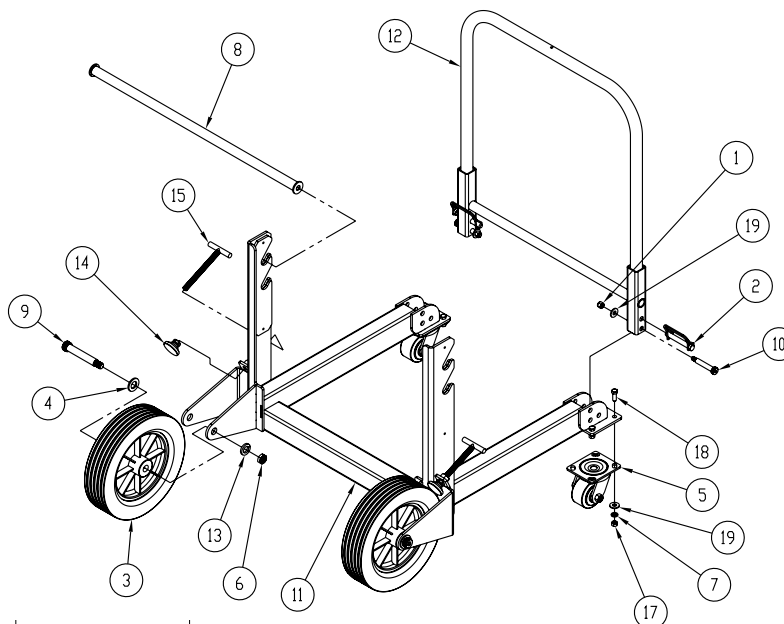
### **TO DISPENSE FROM THE CART**

- 1) Position the cart as needed and tighten both wheel stops against the wheels to help prevent the cart from moving while dispensing. (See Figure 4)
- 2) ALWAYS dispense from the bottom of the reel with the payout direction away from the handle. NOTE: The handle can be in either the horizontal or vertical position when dispensing.



**FIGURE 4**

## **EXPLODED VIEW AND PARTS LIST**



ITEM #	PART #	DESCRIPTION	QTY.
1	2-1501-4	NUT – HEX NYLON INSERT (3/8-16)	2
2	66-003	LOCKING RETAINER PIN, ZINC (1/2" x 3")	2
3	77-015	WHEEL – SEMI PNEUMATIC 12" x 3"	2
4	77-017	WASHER – FLAT 3/4" (SAE)	2
5	99-10	CASTER – SWIVEL	2
6	281-11	NUT – NEX NYLON INSERT THIN (5/8-11)	2
7	452-27	WASHER – LOCK MEDIUM, 3/8 ZINC	6
8	504-199	BAR – RACK	1
9	518-001	3/4" x 4" SHOULDER BOLT	2
10	518-002	1/2" x 2 1/2" SHOULDER BOLT	2
11	518-130	FRAME WELDMENT	1
12	518-131	HANDLE WELDMENT	1
13	2-1404	WASHER, FLAT, 5/8"	2
14	953TR-003	SWIVEL LEVELING MOUNT (1/2" THREAD)	2
15	9548-743	T-SCREW – CLAMP – 4 SIDED ROLER	2
16	518-DECAL	DECAL SET	1
17	452-28	NUT – HEX ZINC (3/8-16)	6
18	524-11	3/8-16 x 1.0" HEX HEAD SCREW	6
19	506-3	WASHER – FLAT 3/8 (USS) ZINC	8