



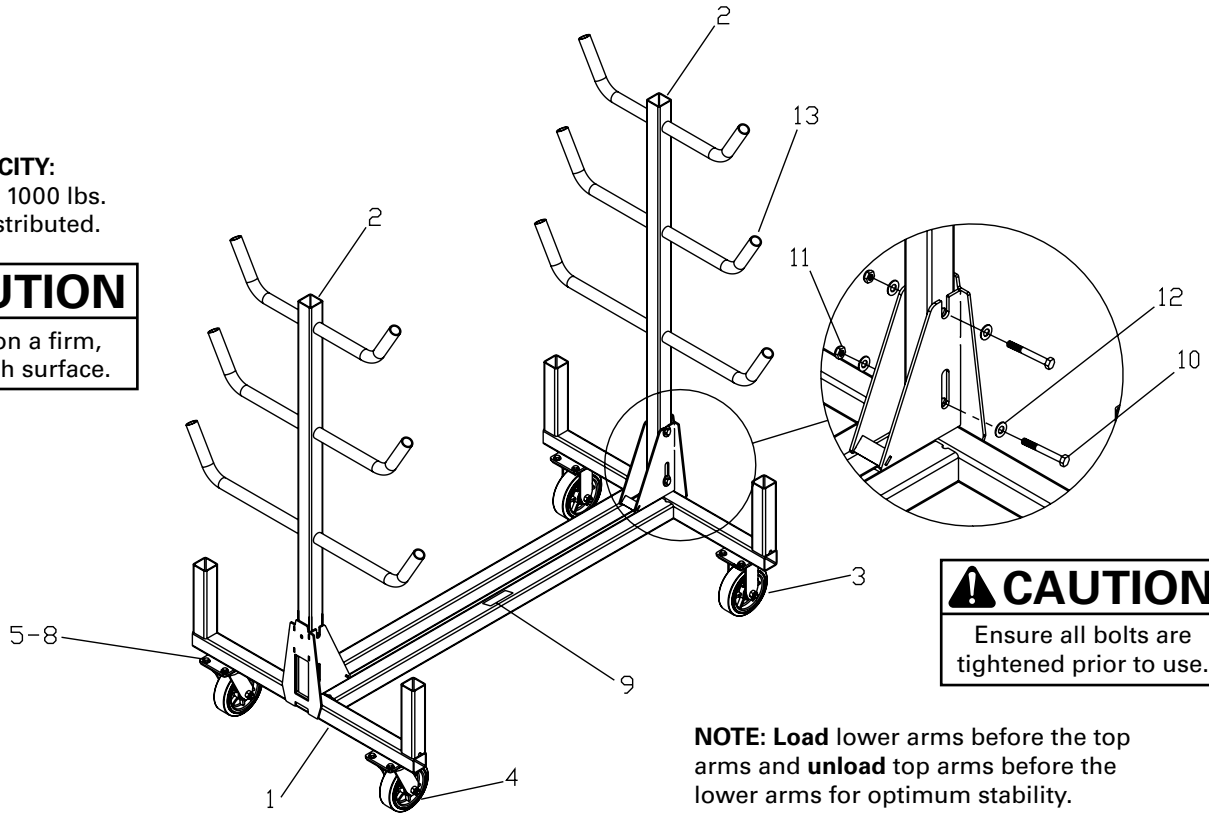
Current Tools

FOR THE PROFESSIONAL ELECTRICIAN

Model 505 Conduit Rack

CAPACITY:
Maximum 1000 lbs.
Evenly distributed.

CAUTION
Only roll on a firm,
flat, smooth surface.



CAUTION
Ensure all bolts are
tightened prior to use.

NOTE: Load lower arms before the top arms and **unload** top arms before the lower arms for optimum stability.

INSTRUCTION SHEET AND PARTS LIST

PARTS LIST — 505 CONDUIT RACK

ITEM#	PART#	QTY	DESCRIPTION
1	505-245	1	BASE
2	505-246	2	ARM
3	506-2	2	CASTER, RIGID
4	506-1	2	CASTER, SWIVEL
5	281-2D	16	SCREW, HEX HEAD CAP 3/8-16 x 1-1/4"
6	506-3	16	WASHER, FLAT
7	452-27	16	WASHER, LOCK

ITEM#	PART#	QTY	DESCRIPTION
8	452-28	16	NUT, HEX, 3/8-16
9	505-10	1	DECAL
10	66-67	4	SCREW, HEX HEAD CAP 1/2-13 x 3/4"
11	281-1J	4	NUT, HEX 1/2-13 THIN NYLON INSERT
12	451-25	8	WASHER, FLAT
13	505-18	12	PLUG, PLASTIC

02/2023

Read and understand this material before operating the Conduit Rack. Failure to understand how to safely operate this Conduit Rack may result in injury or property damage.

This manual is free of charge. All personnel who operate the Conduit Rack should have a copy of this manual and read and understand its contents. To request a copy, call, write to the address below or visit our website. All information, specifications and product designs may change due to design improvements or updates and are subject to change without notice. Current Tools does not assume any liability for damages resulting from misuse or incorrect application of its products.

CURRENT TOOLS • P. O. BOX 17026 GREENVILLE, SC 29606
800.230.5421 or 864.721.4230 • FAX 864.721.4232 • www.currenttools.com



ASSEMBLING CONDUIT RACK FROM THE STORAGE POSITION

1. Ensure that all 4 bolts (Item #10), 8 washers (Item # 12) and 4 nuts (Item # 11) are installed on the arms.
2. Loosen the bolt at the base of both arms and pivot the arms upward. (See Assembly Figure 1).

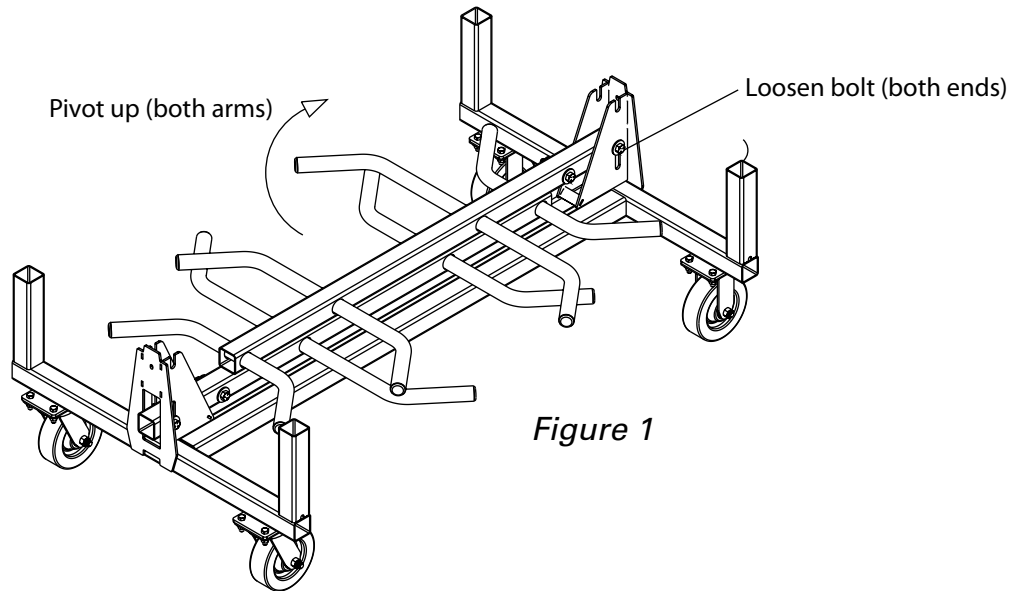


Figure 1

3. Lift the arms high enough to insert the upper bolt into the slot at the top of the arm supports, making sure the washers are on the outside of the support.
4. Ensure the top bolt is fully seated in the arm support slot and completely tighten all 4 bolts prior to use (See Assembly Figure 2).

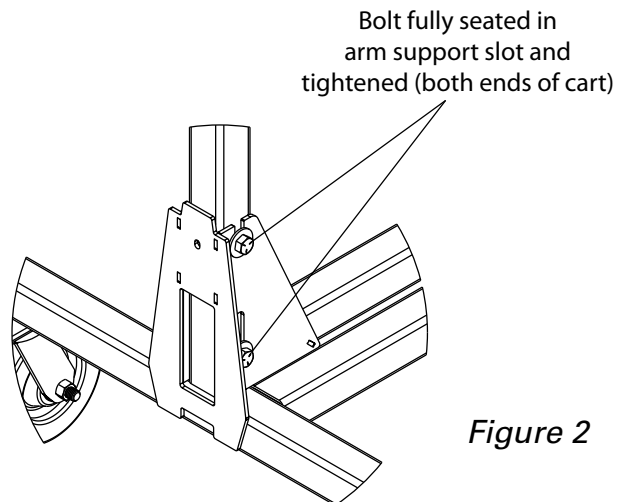


Figure 2



DIS-ASSEMBLING CONDUIT RACK TO THE STORAGE POSITION

1. Loosen all 4 nuts on the arms, making sure the nylon insert on the nuts remain engaged with the threads on the bolts (this will ensure that the nuts remain on the bolts and do not fall off and get lost)
2. Lift the arms high enough to clear the slot at the top of the arm support and fold inward (See Dis-Assembly Figure 3).

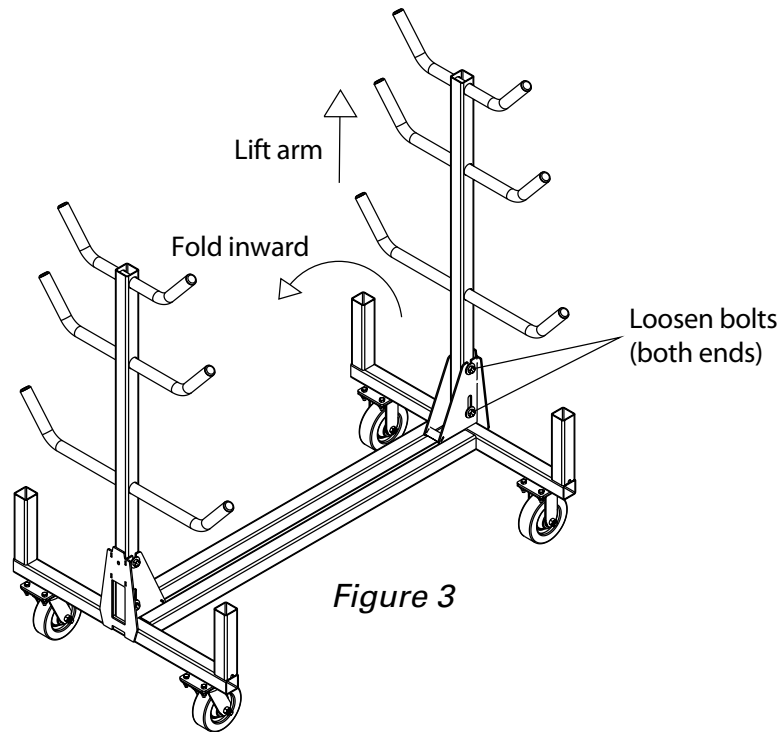


Figure 3

3. Tighten the 2 lower bolts that are captured in the arm support to prevent the folded arms from bouncing or otherwise moving during transport. (See Dis-Assembly Figure 4).

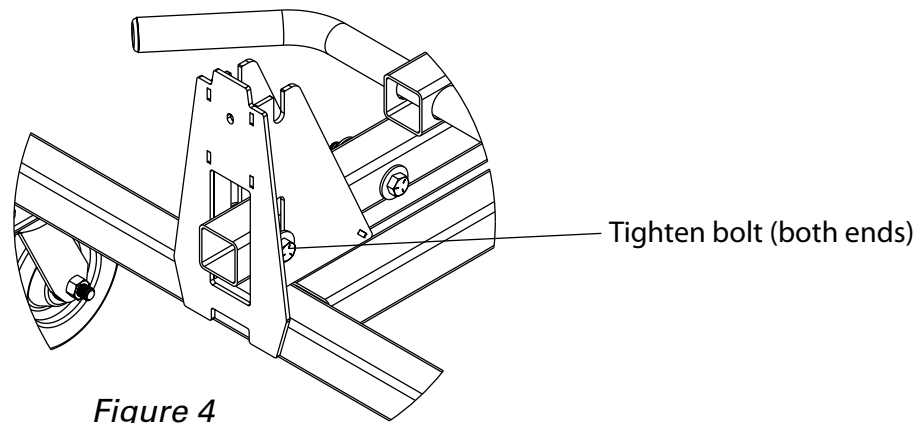


Figure 4

STACKING RACKS FOR STORAGE

1. Ensure both arms are completely folded inward and the 2 lower bolts are tight as described in step 3 of the dis-assembly instructions above.
2. Lift rack and position on top of the second rack, ensuring the top rack fully seats in the notches of the lower rack as shown (See Stacking Figure 5).

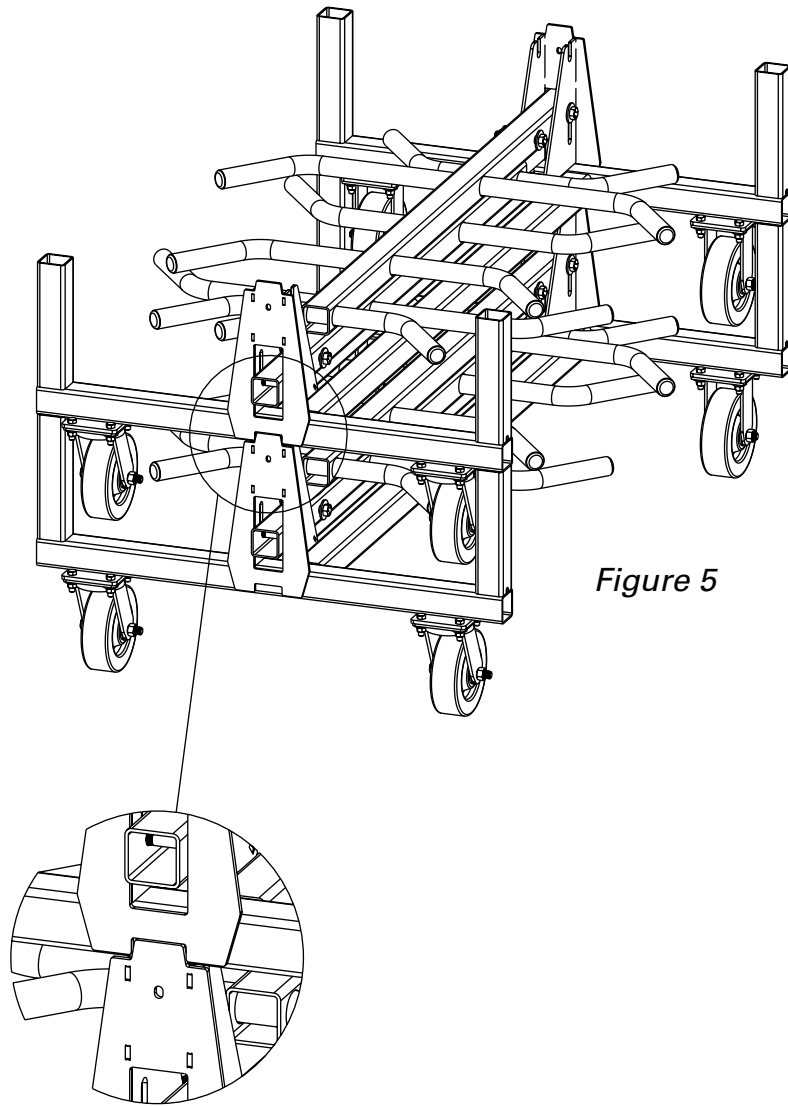


Figure 5