



Current Tools

FOR THE PROFESSIONAL ELECTRICIAN

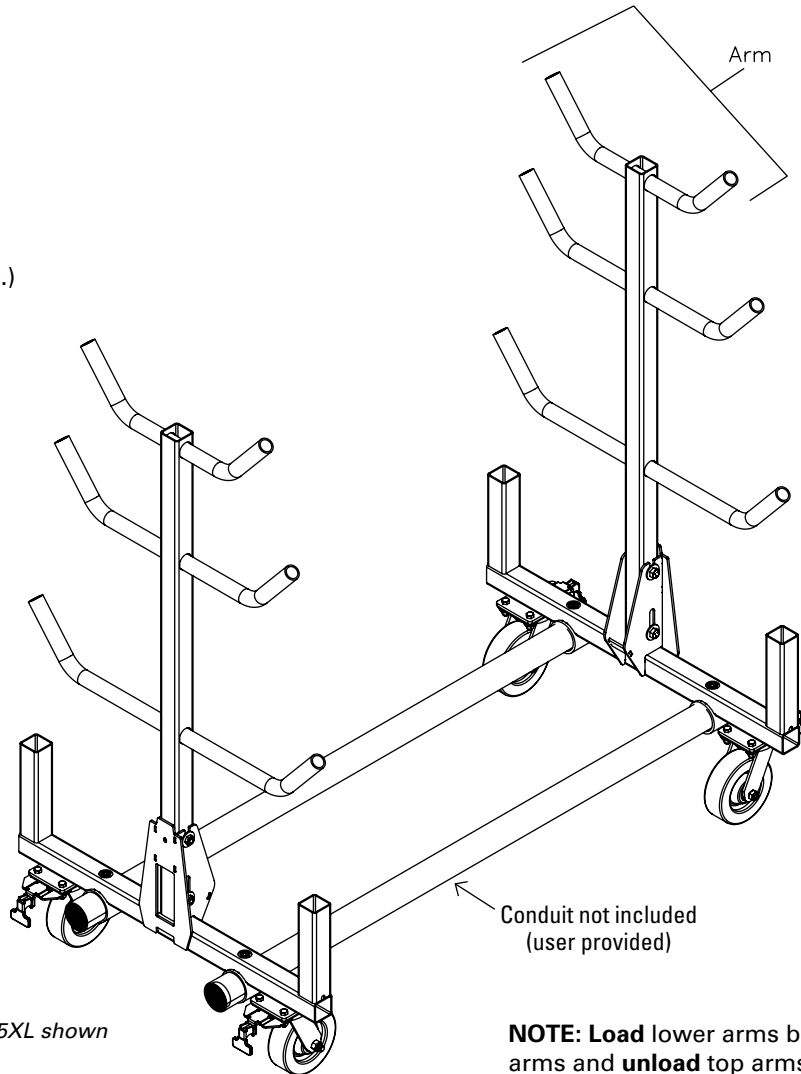
Model 505XL and 505AAXL Modular Conduit Rack

CAPACITY:

- Maximum 250 lbs per set of arms evenly distributed (1,000 lbs. max.)
- Maximum 5' span between uprights
- Maximum 10' overall length

CAUTION

Only roll on a firm, flat, smooth surface.



Model 505XL shown

Conduit not included
(user provided)

NOTE: Load lower arms before the top arms and **unload** top arms before the lower arms for optimum stability.

ASSEMBLY SHEET AND PARTS LIST

02/2023



Read and understand this material before operating the Modular Conduit Rack. Failure to understand how to safely operate this Conduit Rack may result in injury or property damage.

This manual is free of charge. All personnel who operate the Modular Conduit Rack should have a copy of this manual and read and understand its contents. To request a copy, call, write to the address below or visit our website. All information, specifications and product designs may change due to design improvements or updates and are subject to change without notice. Current Tools does not assume any liability for damages resulting from misuse or incorrect application of its products.

CURRENT TOOLS • P. O. BOX 17026 GREENVILLE, SC 29606
800.230.5421 or 864.721.4230 • FAX 864.721.4232 • www.currenttools.com

TABLE OF CONTENTS — 505XL AND 505AAXL MODULAR CONDUIT RACK

<i>Safety Alerts</i>	2
<i>Safety Information</i>	3
<i>Assembly Instructions — Base</i>	4
<i>Assembly Instructions — Upright to Base</i>	5
<i>Completed Assembly</i>	6
<i>Exploded View and Parts List — 505AAXL</i>	7

SAFETY ALERTS



Safety Alert Symbol

THIS SAFETY SYMBOL is used to call your attention to instructions that concern your personal safety. It means: ATTENTION! BE AWARE! THIS IS AN IMPORTANT SAFETY INSTRUCTION!

Read, understand and follow these safety instructions. Failure to follow these safety instructions may result in injury or death.

DANGER

Immediate hazards which, if not avoided, WILL result in serious personal injury or death.

WARNING

Hazards or unsafe practices which, if not avoided, COULD result in serious personal injury or death.

CAUTION

Hazards or unsafe practices which, if not avoided, COULD result in minor personal injury or property damage.

RETAIN SAFETY INFORMATION



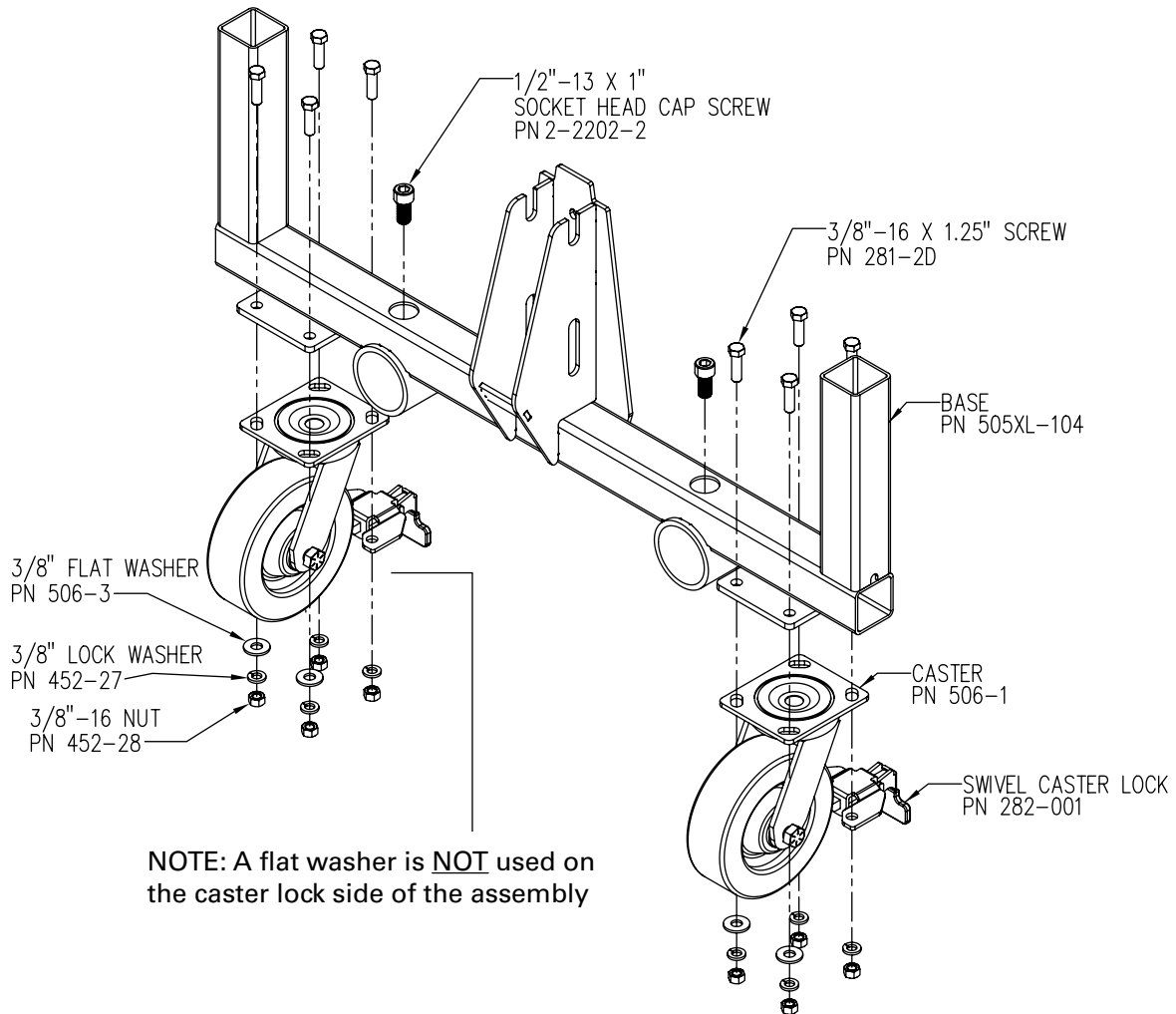
This manual should be read and understood by all personnel who assemble and operate the Modular Conduit Rack. Failure to understand how to assemble and operate this equipment could result in serious injury or property damage.

IMPORTANT SAFETY INFORMATION

- ▲ WARNING** Maximum capacity is 250 lbs. per set of arms (evenly distributed), with a maximum complete rack capacity of 1,000 lbs.
- ▲ WARNING** Maximum span between uprights is 5', with a maximum complete rack length of 10'.
- ▲ WARNING** User supplied conduit used for the base must be 2 inch rigid conduit only.
- ▲ CAUTION** Only roll on a firm, flat, smooth surface.
- ▲ CAUTION** ALWAYS **LOAD** lower arms before the top arms.
- ▲ CAUTION** ALWAYS **UNLOAD** top arms before the lower arms.
- ▲ CAUTION** Tighten 1/2-13 x 1" (Part #2-2202-2) socket head cap screws onto the conduit used as the base.
- ▲ CAUTION** Screw conduit couplings onto all four ends of the Rigid conduit.
- ▲ CAUTION** Ensure that the outside bases are positioned so that the uprights fold inward.

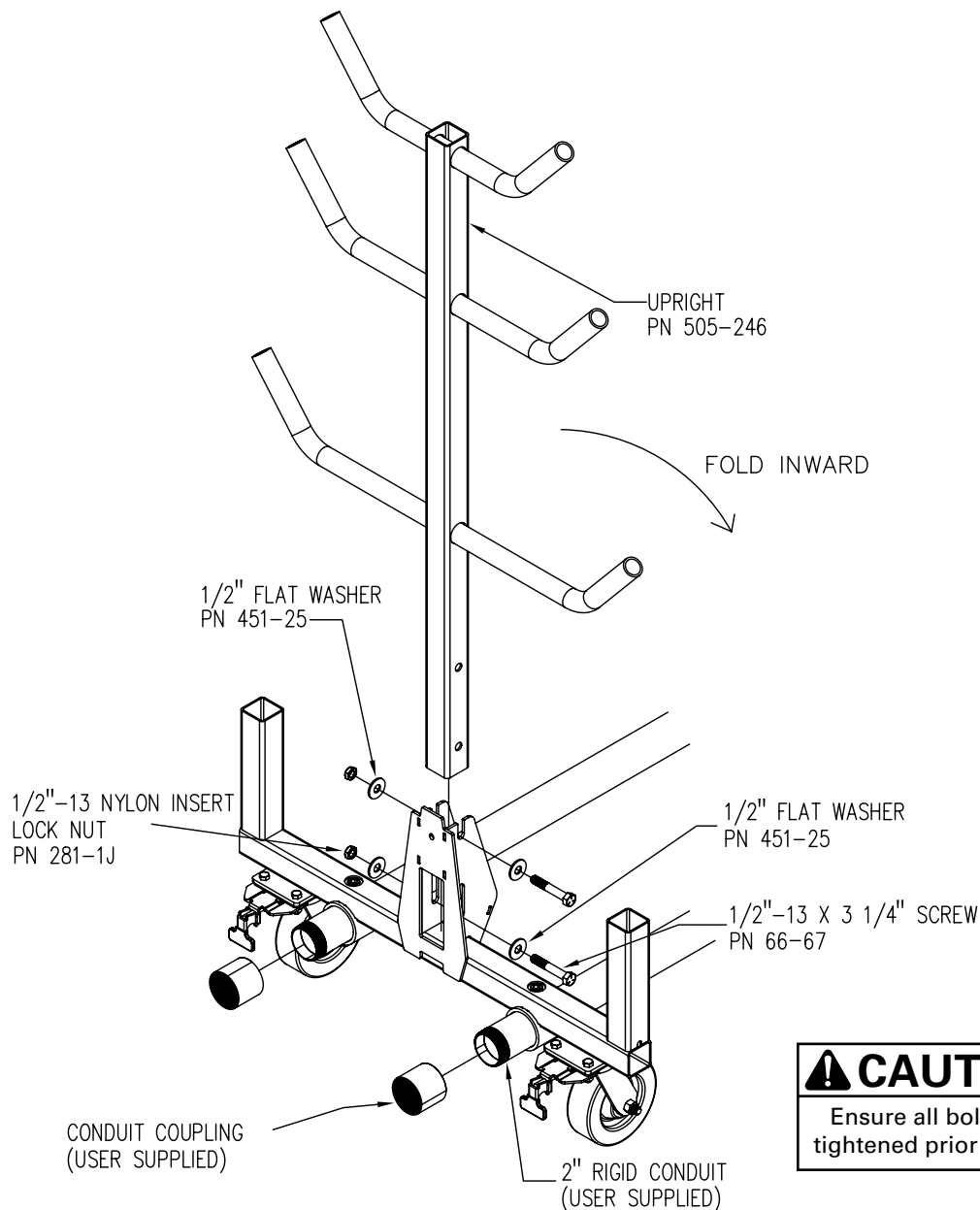


ASSEMBLY INSTRUCTIONS — BASE



The 505XL must be assembled using two people for safety. Assemble the base, casters and swivel caster locks using the supplied hardware. Loosely thread 1/2"-13 x 1" (Part #2-2202-2) socket head cap screws. These will be used to secure to the conduit later.

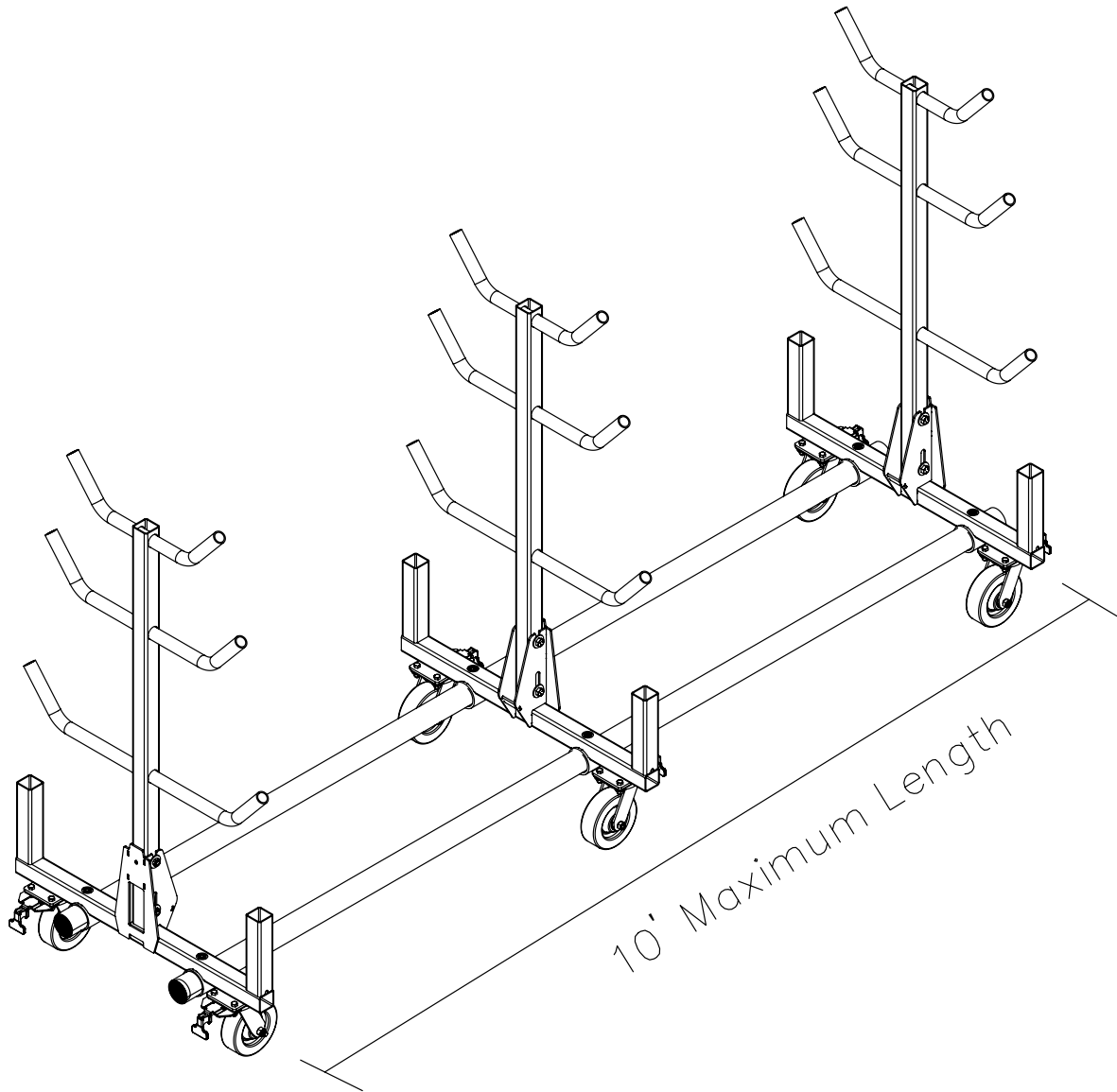
ASSEMBLY INSTRUCTIONS — UPRIGHT TO BASE



Slide the desired number of bases (part # 505XL-104) onto the 2" Rigid Conduit (Conduit is supplied by user). **NOTE: Maximum span between bases must be 5' or less.** Ensure that the outside bases are positioned so that the uprights fold inward as shown in the drawing above. Tighten the two 1/2-13 x 1 Socket Head Cap Screws (part #2-2202-2) to secure the bases to the conduit. Assemble the upright sections (part #505-246) into the bases and secure using the hardware provided. Conduit couplings (user supplied) must be threaded onto all 4 ends of the conduit as shown above.

505XL COMPLETE ASSEMBLY

The 505XL shown below illustrates the rack at its maximum length (10') with an optional base and upright section installed.

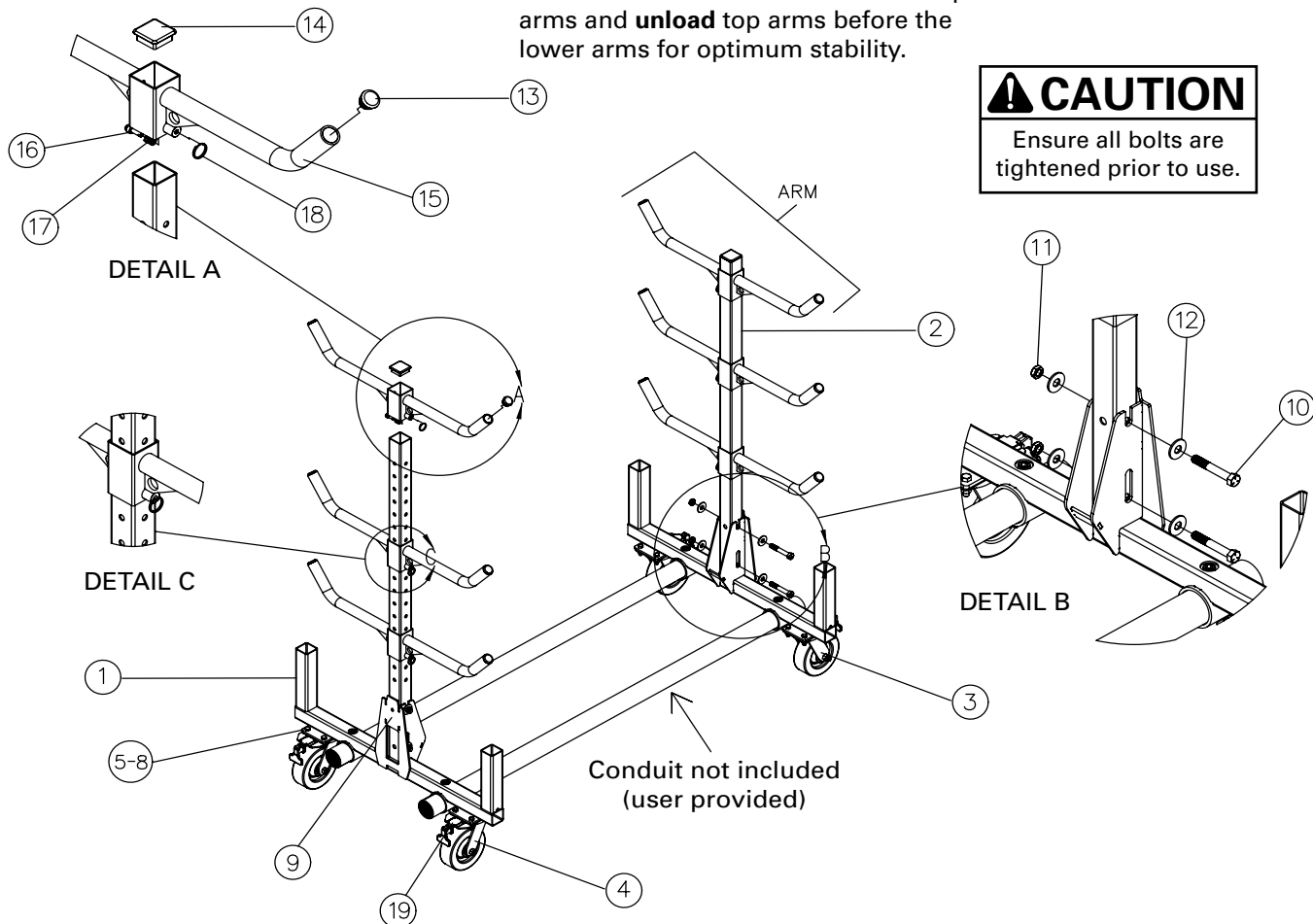


505AAXL MODULAR CONDUIT RACK WITH ADJUSTABLE ARMS

EXPLODED VIEW AND PARTS LIST

NOTE: Load lower arms before the top arms and **unload** top arms before the lower arms for optimum stability.

CAUTION
Ensure all bolts are tightened prior to use.



CAUTION
Only roll on a firm, flat, smooth surface.

CAPACITY:

- Maximum 250 lbs. per set of arms evenly distributed (1,000 lbs max)
- Maximum 5' span between uprights
- Maximum 10' overall length

PARTS LIST — 505AAXL CONDUIT RACK

ITEM#	PART#	QTY	DESCRIPTION
1	505XL-104	1	BASE
2	505AA-115	2	TUBE – CENTER
3	506-2	2	CASTER, RIGID
4	506-1	2	CASTER, SWIVEL
5	281-2D	16	SCREW, HEX HEAD CAP 3/8-16 × 1-1/4"
6	506-3	16	WASHER, FLAT
7	452-27	16	WASHER, LOCK
8	452-28	16	NUT, HEX, 3/8-16
9	505AAXL-DECAL	1	DECAL
10	66-67	4	SCREW, HEX HEAD CAP 1/2-13 × 3 1/4"

ITEM#	PART#	QTY	DESCRIPTION
11	281-1J	4	NUT, HEX 1/2-13 THIN NYLON INSERT
12	451-25	8	WASHER, FLAT
13	505-18	12	PLUG, PLASTIC
14	752-107	2	CAP, PLASTIC
15	505AA-101	6	ARM, ADJUSTABLE
16	505AA-113	6	PIN
17	505AA-002	6	SPRING
18	8099-3	6	RING
19	282-001	4	SWIVEL CASTER LOCK