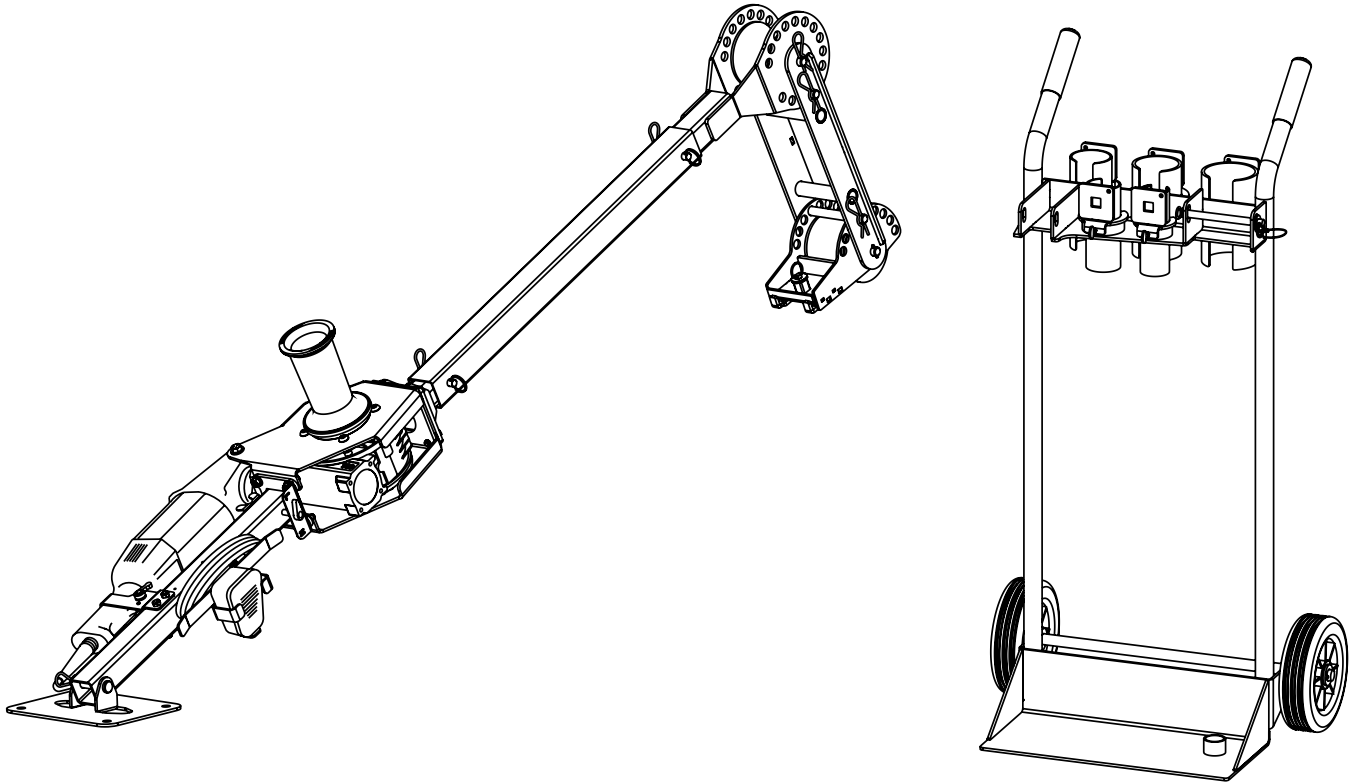




Current Tools

FOR THE PROFESSIONAL ELECTRICIAN

Model 66C Cable Puller with Mobile Cart



Operating, Maintenance, Safety and Parts Manual

3/2023



Read and understand this material before operating or servicing the Cable Puller. Failure to understand how to safely operate and service this unit may result in serious injury or death.

This manual is free of charge. All personnel who operate the Cable Puller should have a copy of this manual and read and understand its contents. To request a copy of this manual or replacement safety decals, or for technical assistance, call or write to the address below.

CURRENTTOOLS • P. O. BOX 17026 GREENVILLE, SC 29606
800.230.5421 or 864.721-4230 • FAX 864.721-4232
www.currenttools.com



TABLE OF CONTENTS

<i>Safety Alerts</i>	3
<i>Important Safety Information</i>	4,5
<i>Specifications</i>	6
<i>Features</i>	6
<i>Set-Up and Operating Instructions</i>	7-10
<i>Common Set-Ups</i>	11
<i>Maintenance</i>	12
<i>Exploded View</i>	13,14
<i>Parts List</i>	15,16
<i>Wiring Drawing — Foot Switch</i>	16
<i>Exploded View and Parts List — Mobile Cart</i>	17



Safety Alert Symbol

THIS SAFETY SYMBOL is used to call your attention to instructions that concern your personal safety. It means: ATTENTION! BE AWARE! THIS IS AN IMPORTANT SAFETY INSTRUCTION!

Read, understand and follow these safety instructions. Failure to follow these safety instructions may result in injury or death.

DANGER

Immediate hazards which, if not avoided, **WILL** result in serious personal injury or death.

WARNING

Hazards or unsafe practices which, if not avoided, **COULD** result in serious personal injury or death.

CAUTION

Hazards or unsafe practices which, if not avoided, **COULD** result in minor personal injury or property damage.

RETAIN SAFETY INFORMATION

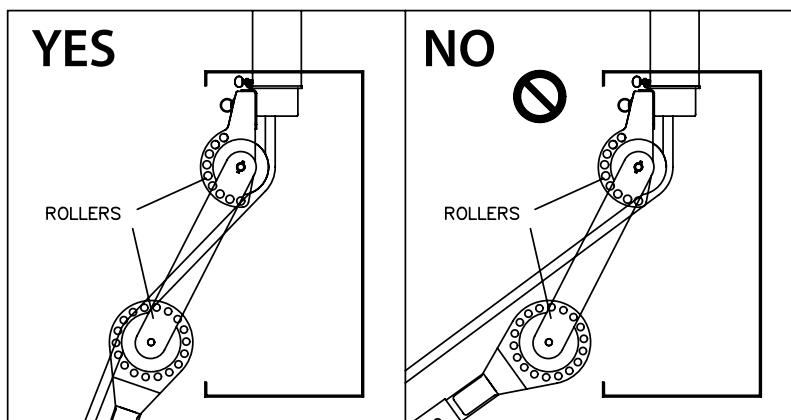


This manual should be read and understood by all personnel who operate or service this Cable Puller. Failure to understand how to safely operate and service this equipment could result in injury or death. This equipment should only be operated and serviced by qualified personnel.



IMPORTANT SAFETY INFORMATION

- ⚠ DANGER** DO NOT operate cable puller in wet or damp locations.
- ⚠ DANGER** DO NOT expose to rain.
- ⚠ DANGER** DO NOT operate in an explosive atmosphere.
- ⚠ DANGER** DO NOT use near energized circuits.
- ⚠ WARNING** DO NOT use cable puller as a hoist or for lifting, supporting or transporting people or loads. Use only for its intended purpose as a cable puller.
- ⚠ WARNING** DO NOT wrap rope around any body parts. DO NOT wrap rope around wrists. Hold rope so that it may be released quickly.
- ⚠ WARNING** ALWAYS keep rope away from operator's feet.
- ⚠ WARNING** DO NOT exceed load rating of cable puller, rope or accessories.
- ⚠ WARNING** ALWAYS inspect rope before each use.
- ⚠ WARNING** ALWAYS disconnect cable puller before servicing.
- ⚠ WARNING** ALWAYS plug the Model 66C Cable Puller into a grounded receptacle with a 15 amp GFCI protected circuit. DO NOT modify the plug provided with the Model 66C Cable Puller.
- ⚠ WARNING** ALWAYS insure cable puller is properly secured to conduit and all pins are in place before operating.
- ⚠ WARNING** Pulling Rope should be the only thing to contact the capstan. NEVER let swivels, grips, etc. come in contact with the capstan.
- ⚠ WARNING** Rope must ALWAYS be pulled over a rotating sheave. If a sheave does not rotate, turn cable puller off immediately and determine problem before continuing the pull.
- ⚠ WARNING** Set up the cable puller so that pulling rope ALWAYS contacts both rollers. (See drawing below.)



IMPORTANT SAFETY INFORMATION *continued*

▲ WARNING ONLY use $\frac{3}{4}$ " or larger double-braided composite pulling rope with an average breaking strength of 26,000 lbs.

▲ WARNING NEVER allow the rope to slip on a rotating capstan for more than a couple of seconds. The rope will wear in that spot and the rope could break under pressure.

▲ WARNING Keep all body parts, hair, loose clothing, etc. away from rotating parts and pinch points. Keep hands away from capstan.

▲ WARNING DO NOT allow the rope to overlap on the capstan. If this condition begins to occur, immediately release the tailing force on the rope. If this does not remedy the overlap, stop the puller and run the puller in reverse to unwind the overlap.

▲ WARNING During the pull, all personnel must stand to the side of the cable puller and out of the direct line of tight pulling rope.

▲ WARNING The cable puller must be attached to steel or schedule 40 PVC conduit only. When attached to PVC conduit, the conduit **MUST** be supported within 2" of the end.

▲ WARNING ALWAYS inspect pins to be sure they are fully inserted through holes and have spring clips properly attached. DO NOT substitute any other object for factory supplied pins.

▲ WARNING When making a vertical cable pull, keep the area underneath the cable pull clear of all personnel.

▲ WARNING Keep fingers away from adjustment holes and pivoting parts. Fingers can be severed by pivoting parts.

▲ CAUTION DO NOT alter this cable puller. Doing so will void the warranty. Guards and safety features are provided for your protection.

▲ CAUTION Wear eye protection when operating the cable puller.

▲ CAUTION Inspect all components of the cable puller before beginning any cable pull. Replace any worn or defective components.

▲ CAUTION Be careful during assembly and disassembly of the cable puller. Have control of components before removing any pins.

▲ CAUTION DO NOT use an extension cord longer than 100 ft. Extension cord should be a minimum of 12 gauge wire with ground.

▲ CAUTION This cable puller exceeds 50 lbs. and will require more than one person to lift or carry.

▲ CAUTION The motor, gear box and capstan may heat up during the pull. Be careful.

▲ CAUTION ALWAYS pull in the direction of the arrows on top of the capstan.

▲ CAUTION Shift speeds **ONLY** when the capstan is at a stop. DO NOT shift speeds while the capstan is moving.

▲ CAUTION Before shifting speeds, release the tailing force on the rope to relieve the tension on the capstan and motor gearbox.

SPECIFICATIONS

model no.	— 66C Cable Puller (mounted on 2 Wheel Mobile Cart)
width	— 24½"
depth	— 18"
height	— 49"
fully extended length	— 102"
weight	— 115 lbs. – (cable puller only) — 179 lbs. – (cable puller mounted on mobile cart)
maximum pulling force	— 6,000 lbs.
speeds	— <u>no load</u> Low – 12 ft./min. High – 44 ft./min.
motor	— 120 volts AC, 60 hertz, 13 amps
pulling rope	— ¾" or larger double braided composite pulling rope with an average breaking strength of 26,000 lbs.

FEATURES

- Integral heavy-duty 2 speed motor
- Quick-release conduit couplings
- Mobile Cart with storage for conduit couplings (see photo 1 at right)
- Tapered capstan
- Integral foot switch
- Permanently lubricated vent-free gear box
- Lightweight – weighs only 115 lbs. when assembled and ready for pull.
- Foot switch storage pocket (see photo 2 below)



Photo 2



Photo 1

SET-UP AND OPERATION INSTRUCTIONS



Model 66C Cable Puller shown pinned for transport on mobile cart.



Photo 3



Photo 4

- 1** Remove the transport pins to release the cable puller (photo 3) and boom section (photo 4) from the mobile cart.



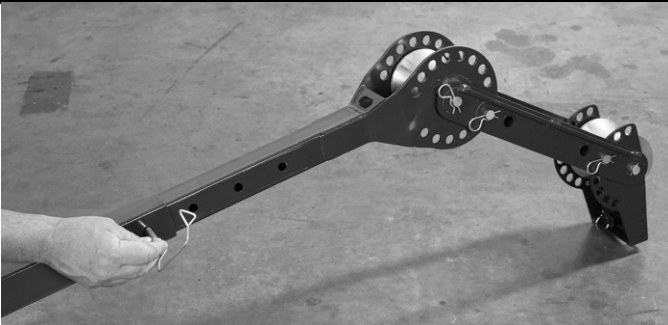
- 2** Turn the boom section in the direction needed for the type pull (UP or DOWN). See common setups on page 11. Re-insert the pin removed in photo 3 to connect puller section to boom section.



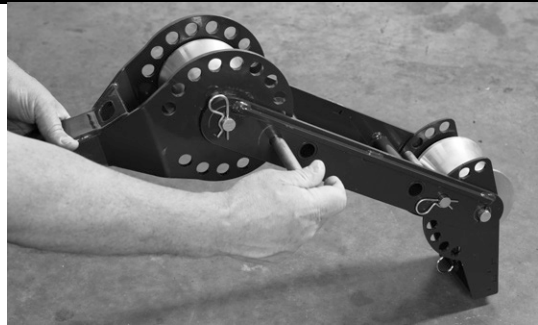
- 3** Model 66C Cable Puller shown pinned together and ready for pull.



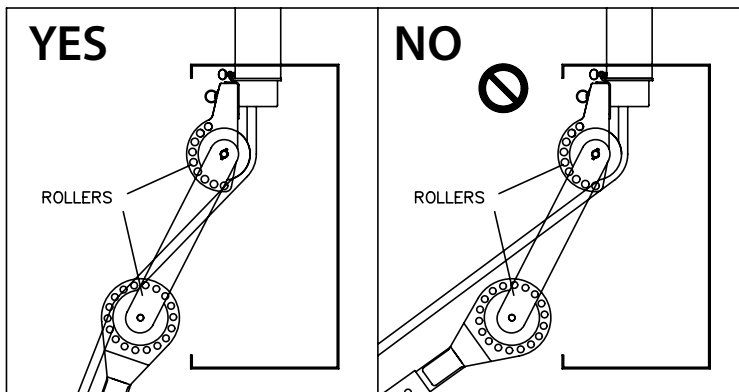
SET-UP AND OPERATION INSTRUCTIONS — CONTINUED



- 4** Adjust Boom section to desired length and re-pin.



- 5** Next, to position the extension arm to the desired angle for the pull, remove the pin that allows the extension arm to be adjusted to various positions and re-pin at desired angle.



⚠ WARNING

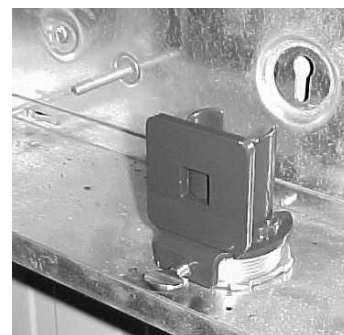
Set up the cable puller so that pulling rope **ALWAYS** contacts both rollers. (See drawing at left).



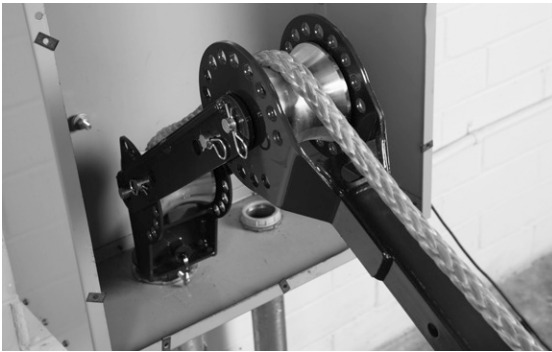
- 6** Complete coupling set stores on mobile cart as shown above. To store or remove couplings from cart, loosen or tighten the provided thumb screw.

- 7** Choose the conduit coupling for the size conduit you will be connecting to. Back out the thumb screw and insert the conduit coupling into the conduit until the ring of the conduit coupling sits flush against the top of the conduit.

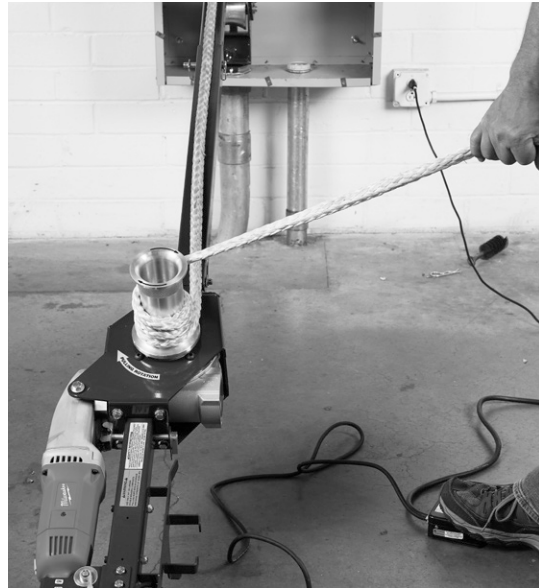
NOTE: For a down pull, back out the thumb screw and insert the conduit coupling into the conduit until the ring of the conduit coupling sits flush against the top of the conduit. Then, to hold the conduit coupling in place, tighten the thumb screw.



SET-UP AND OPERATION INSTRUCTIONS — CONTINUED



- 8** Next, move the cable puller into position and attach the extension arm onto the conduit coupling. You should hear a “click” as the conduit coupling fits into the extension arm. If extension arm is not at the correct angle to attach to conduit coupling, the angle of the extension arm may be adjusted. (SEE **STEP #5**). Also, the adjustable tube can be repositioned (SEE **STEP #4**).



- 9** Operator may stand on either side of the cable puller. Place the foot switch on the side the operator will be standing. Plug the cord into a 15 amp GFCI protected outlet.

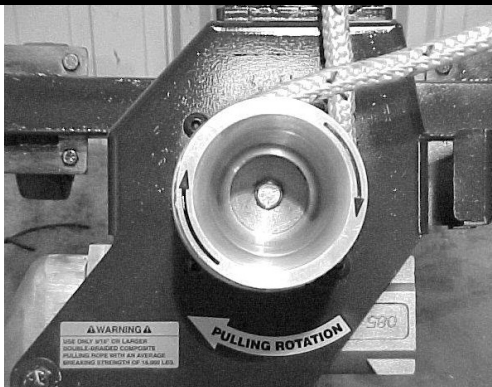
WARNING

Keep fingers away from adjustment mount holes and pivoting parts. Fingers can be severed by pivoting parts.

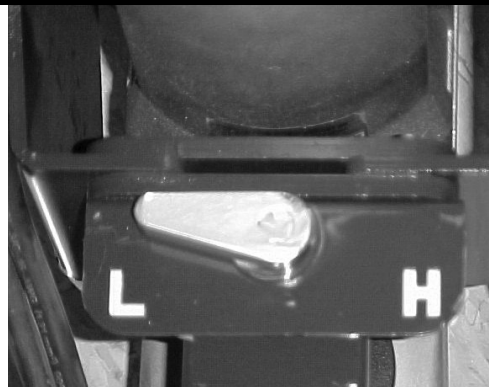


- 10** Turn the FWD/REV switch to the *forward* position.

SET-UP AND OPERATION INSTRUCTIONS — CONTINUED



- 11** Depress the foot switch and check the rotation of the capstan with the pulling rotation decal on the cable puller.



- 12** Next, turn the High/Low speed switch to the desired position, "H" or "L"



- 13** To begin the pull, place 2 to 3 wraps of the pulling rope around the capstan. Depress the foot switch and begin the pull. If the amount of tension (tailing force) you have to put on the pulling rope exceeds approximately 10 lbs., then turn the cable puller off and add one wrap of the pulling rope. Note that if the rope is in a "v" shape as shown in photo 13, the pull for the operator is easier than if pulled at a 90° (or "L" shape).



- 14** When the pull is completed, pull the ring on the back of the extension arm to separate the conduit coupling from the extension arm. NOTE: Be sure to loosen the thumb screw if you have tightened it against the conduit.

⚠ WARNING NEVER allow the rope to slip on a rotating capstan for more than a couple of seconds. The rope will wear in that spot and the rope could break under pressure.

⚠ WARNING DO NOT allow the rope to overlap on the capstan. If this condition begins to occur, immediately release the tailing force on the rope. If this does not remedy the overlap, stop the puller and run the puller in reverse to unwind the overlap.

⚠ CAUTION The motor, gear box and capstan may heat up during the pull. Be careful.

COMMON SET-UPS



UP PULL



DOWN PULL





WARNING

Unplug the cable puller before servicing.



CAUTION

DO NOT alter this cable puller. Doing so will void the warranty. Guards and safety features are provided for your protection.

Capstan

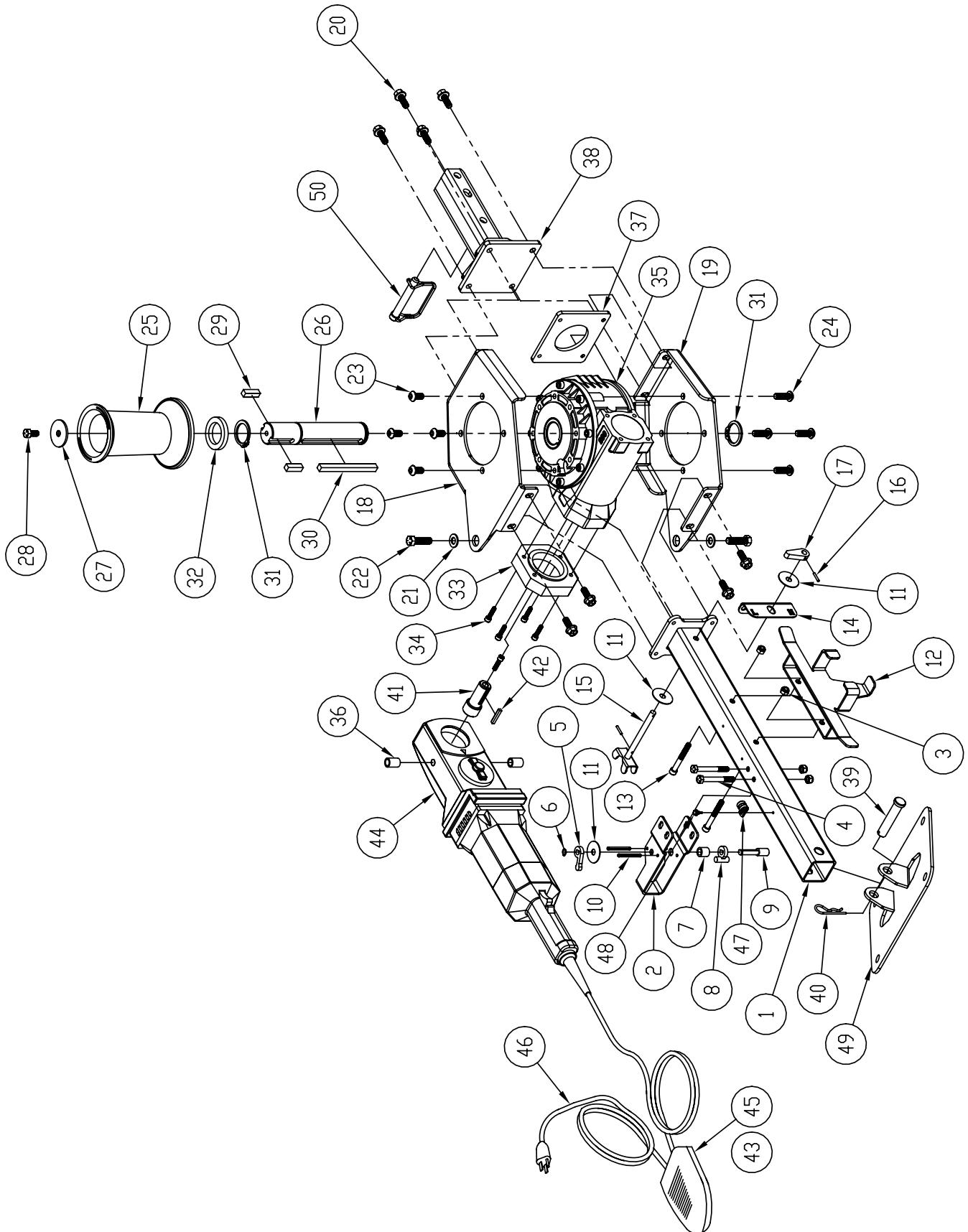
Replace the capstan if it is grooved more than $\frac{1}{16}$ " deep.

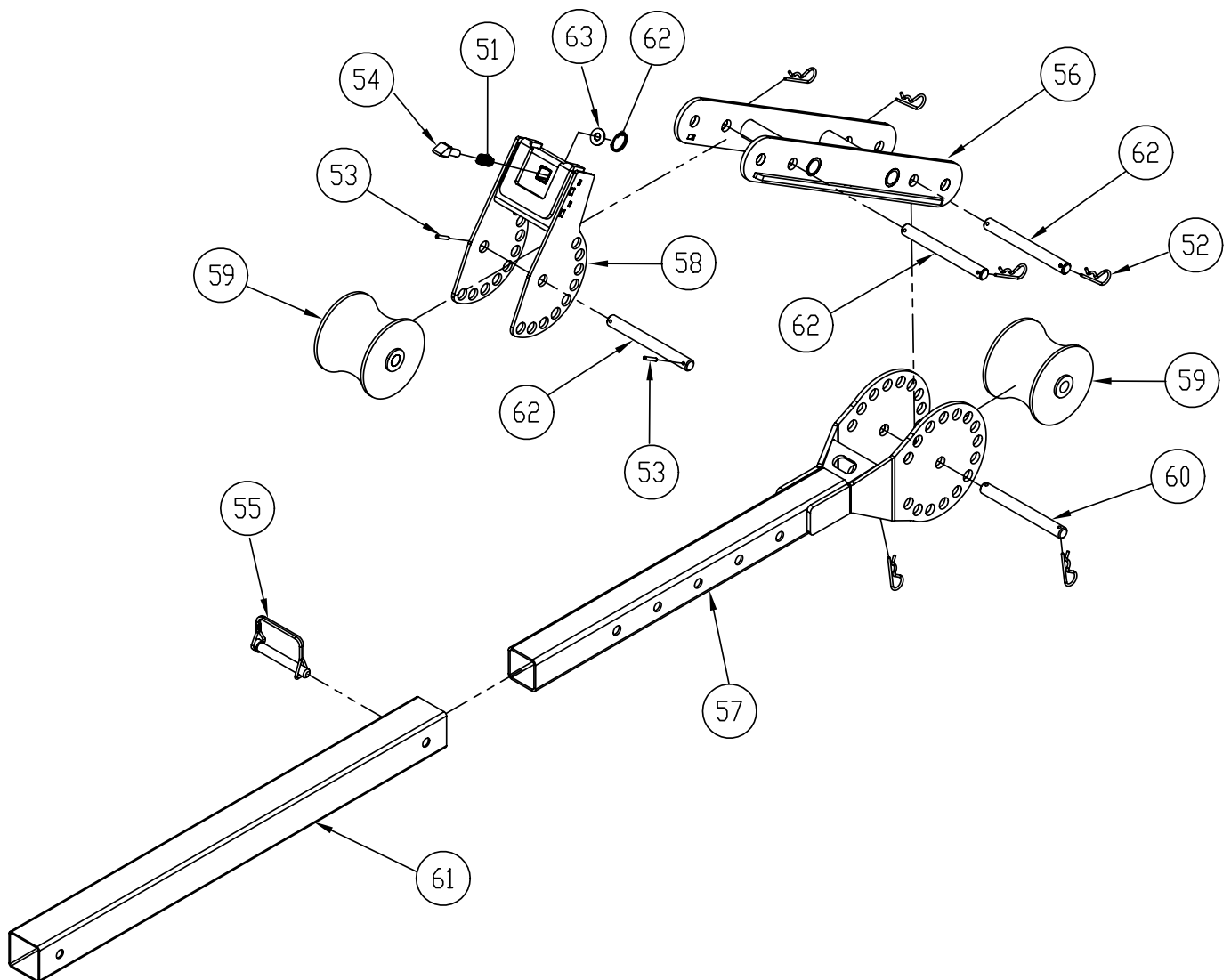
Gear Box

The Model 66C Cable Puller has a vent-free gear box and is factory lubricated for life with synthetic, semi-fluid gear lubricant with an operating range of +5°F to +220°F.



EXPLODED VIEW — 66C CABLE PULLER







PARTS LIST — 66C CABLE PULLER

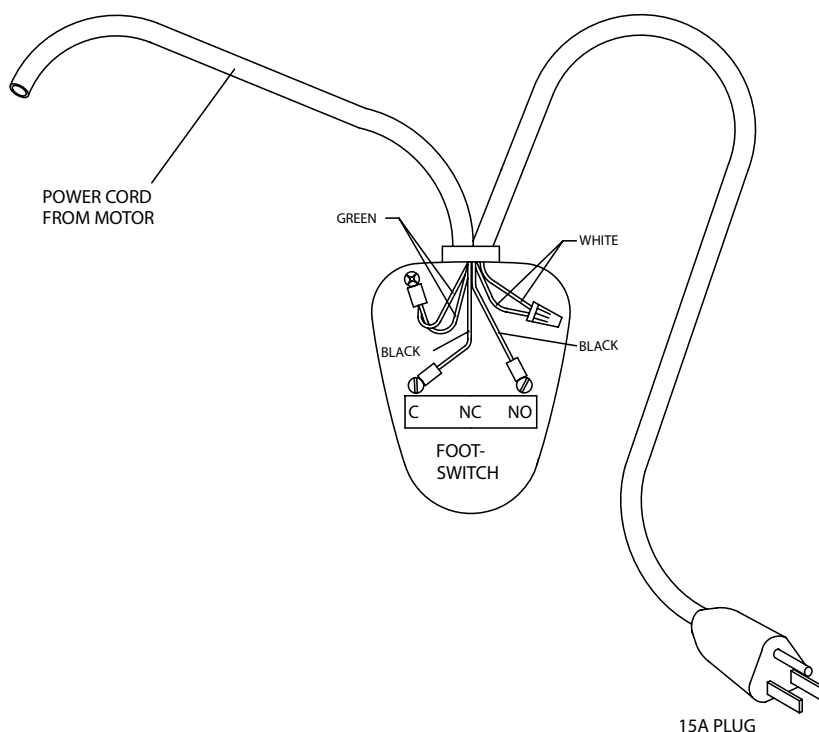
ITEM #	PARTS DESCRIPTION	QTY	PART#
1.....	LOWER TUBE WELDMENT	1	66-971
2.....	BRACKET FAB — SWITCH	1	66-695
3.....	NUT — HEX NYLON INSERT (5/16"–18)	4	2-1301-4
4.....	SCREW — HEX HEAD CAP GR5 ZINC (5/16–18 × 2.75)	2	66-39
5.....	LEVER — DRILL SWITCH, 33 AND 66	1	33-699
6.....	RING — RETAINING 3/8 EXTERNAL	1	33-19
7.....	SPACER — DRILL SWITCH, 33	1	33-703
8.....	CAM — DRILL SWITCH, 33 AND 66	1	33-735
9.....	BAR — ACTUATOR, SWITCH 33	1	33-702
10.....	3/16 × 1.87 ROLL PIN	2	33-12
11.....	FLAT WASHER 3/8"	3	33-54
12.....	WELDMENT — WIRE/FOOT SWITCH HOLDER	1	33-706
13.....	SCREW — SOCKET HEAD CAP (5/16–18 × 2.5")	2	66-40
14.....	SELECTOR SWITCH PLATE	2	66-660
15.....	HI/LO WELDMENT	1	66-685
16.....	ROLL PIN 1/8 × 3/4	2	77-035A
17.....	HI/LO SWITCH	1	66-742
18.....	GEARBOX MOUNTING BRACKET	1	66-601A
19.....	GEARBOX MOUNTING BRACKET	1	66-601
20.....	SCREW — HEX FLANGE (3/8–16 × 1)	8	66-30
21.....	WASHER — FLAT 7/16" (SAE)	2	66-76
22.....	SCREW — HEX HEAD CAP GR5 ZINC (7/16–14 × 1.5)	2	66-33
23.....	SCREW — BUTTON HEAD SOCKET (M10 × 20)	4	66-35
24.....	SCREW BUTTON HEAD SOCKET (M10 × 30)	4	66-37
25.....	CAPSTAN — 6K PULLER	1	66-595
26.....	CAPSTAN SHAFT — 6K PULLER	1	66-599
27.....	CAPSTAN RETAINING WASHER	1	66-662
28.....	SCREW — HEX HEAD CAP GR5 ZINC (3/8–16 × 3/4)	1	33-53
29.....	KEY 3/8" SQ × 1-1/4"	2	66-38
30.....	KEY 3/8" SQ × 4-3/4"	1	66-66
31.....	RING — RETAINING H.D. EXT (1.5)	2	280-8B
32.....	CAPSTAN BEARING WASHER	1	66-661
33.....	ADAPTER CAP	1	66-598
34.....	SCREW — SOCKET HEAD CAP (M6 × 25)	4	66-32
35.....	GEARBOX	1	66-2
36.....	MOTOR SPACER	2	66-663
37.....	BACK-UP PLATE	1	66-643
38.....	TUBE CONNECTED WELDMENT	1	66-605
39.....	PIN 5/8" CLEVIS	1	33-24
40.....	R CLIP	1	33-36
41.....	ADAPTER SHAFT	1	33-460
42.....	KEY 3/16" SQ × 1-1/4"	1	33-49
43.....	STRAIN RELIEF	1	450-18
44.....	MOTOR	1	33-1
45.....	FOOT SWITCH	1	33-45
46.....	POWER CORD	1	450-4
47.....	RETAINER — CORD	1	66-62
48.....	SCREW — HEX HEAD SELF DRILL ZINC (#10–32 × 1/2)	1	77-033A
49.....	PLATE — BOTTOM	1	33-934
50.....	LOCKING RETAINER PIN, ZINC (1/2" × 3")	1	66-003
51.....	PAWL — COUPLING MOUNT SPRING	1	33-22
52.....	R CLIP	6	33-36

PARTS LIST — 66C CABLE PULLER *continued*

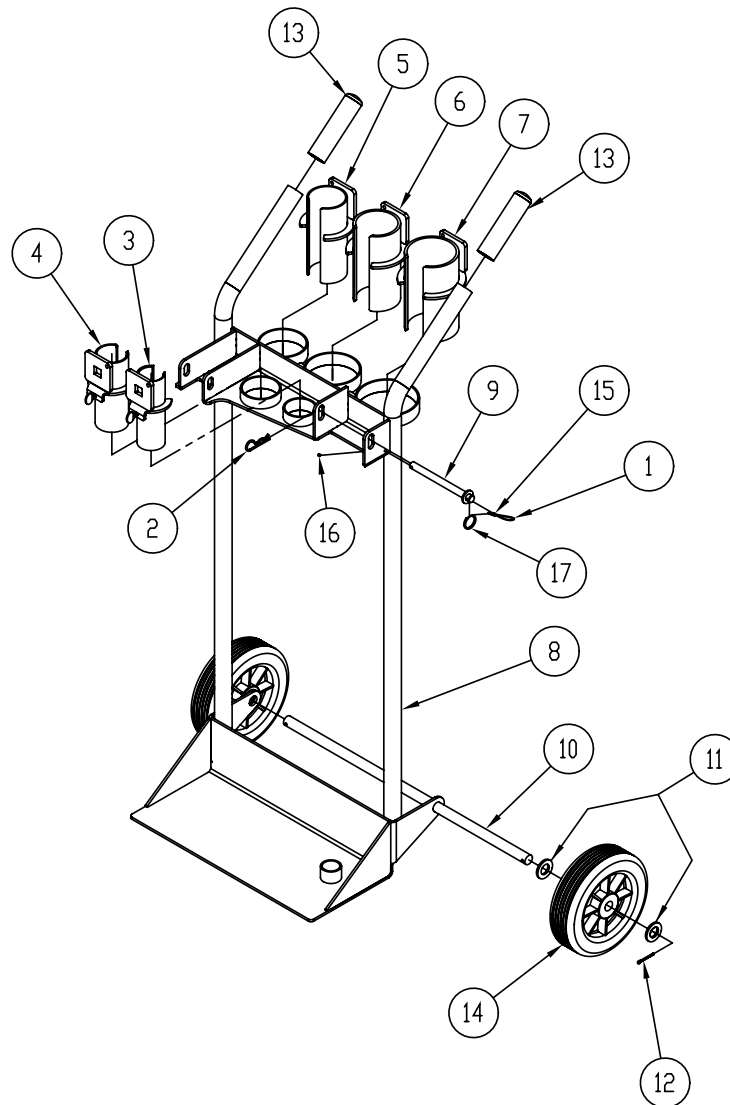
6000 LB PULLER

<u>ITEM #</u>	<u>PARTS DESCRIPTION</u>	<u>QTY</u>	<u>PART#</u>
53.....	PIN — ROLL 5/32 × 1.....	2.....	33-42
54.....	PAWL — COUPLING MOUNT.....	1.....	33-485
55.....	LOCKING RETAINER PIN, ZINC (1/2" × 3").....	1.....	66-003
56.....	EXTENSION ARM WELDMENT	1.....	66-110
57.....	ADJUSTABLE TUBE WELDMENT	1.....	66-127
58.....	NOSE UNIT WELDMENT	1.....	66-200
59.....	ROLLER — 6K PULLER	2.....	66-600
60.....	PIN — 66 PULLER	4.....	66-684
61.....	EXTENSION TUBE.....	1.....	66C-103
62.....	PULL RING.....	1.....	8099-3
63.....	WASHER — FLAT 5/16" USS ZINC.....	1.....	9544-21

WIRING DRAWING — FOOT SWITCH



EXPLODED VIEW — 66C MOBILE CART



ITEM #	PARTS DESCRIPTION	QTY	PART#
1.....	LANYARD CABLE	1	33-27
2.....	R CLIP.....	1	33-36
3.....	COUPLING — 2"	1	66-51
4.....	COUPLING — 2-1/2"	1	66-52
5.....	COUPLING — 3"	1	66-53
6.....	COUPLING — 3-1/2"	1	66-54
7.....	COUPLING — 4"	1	66-55
8.....	66C CLASSIC CART WELDMENT	1	66C-201
9.....	PIN — 66C CART	1	66C-216
10.....	AXLE — 66 CART	1	66C-214
11.....	WASHER — FLAT 3/4" (SAE)	4	77-017
12.....	PIN — COTTER (1/8 X 1.25) ZINC.....	2	501-14
13.....	GRIP.....	2	504-1
14.....	8" WHEEL.....	2	510-2
15.....	FERRULE — DOUBLE	1	670-6
16.....	SLEEVE — SINGLE	1	670-6A
17.....	PULL RING.....	1	8099-3