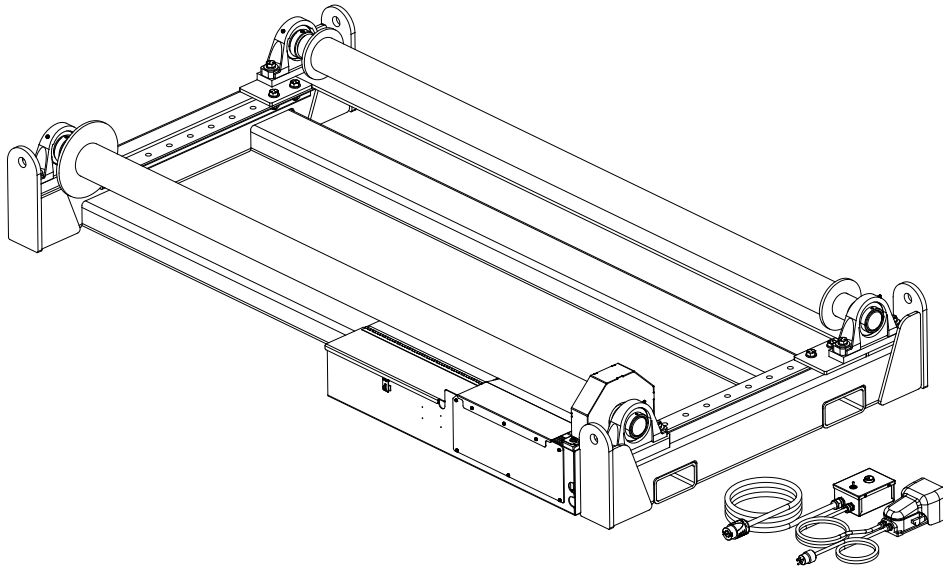




Current Tools

FOR THE PROFESSIONAL ELECTRICIAN

Model 615 Cable Reel Roller with 615-088 Motor



Operating, Maintenance, Safety and Parts Manual

02/2026



Read and understand this material before operating or servicing this Cable Reel Roller. Failure to understand how to safely operate and service this unit may result in serious injury or death

This manual is free of charge. All personnel who operate or service this Cable Reel Roller should have a copy of this manual and read and understand its contents. To request a copy, call, write to the address below or visit our website at www.currenttools.com. All information, specifications and product designs may change due to design improvements or updates and are subject to change without notice. Current Tools does not assume any liability for damages resulting from misuse or incorrect application of its products.

CURRENT TOOLS • P. O. BOX 17026 GREENVILLE, SC 29606


800.230.5421 or 864.721.4230 • FAX 864.721.4232

www.currenttools.com

TABLE OF CONTENTS

<i>Safety Information</i>	2,3
<i>Specifications</i>	3
<i>Features</i>	3,4
<i>Grounding Instructions</i>	5
<i>Operating Instructions</i>	6,7
<i>Idler Roller Position Chart</i>	8
<i>Maintenance</i>	9
<i>Wiring Schematic</i>	9
<i>Exploded Views and Parts Lists</i>	10-13

SAFETY INFORMATION



This manual should be read and understood by all personnel who operate or service this Cable Reel Roller. Failure to understand how to operate and service this equipment could result in injury or death. This Cable Reel Roller should only be operated by qualified personnel.

- ALWAYS place the cable reel roller on a firm, level surface. Be sure the surface is capable of supporting the full load of the cable reel roller and the cable reel.
- ALWAYS remove reel of cable before moving or transporting the cable reel roller.
- ALWAYS lift the cable reel roller using forklift pockets or by lifting eyes provided at each corner of the unit.
- NEVER attempt to lift the cable reel roller by the rollers.
- DO NOT operate or store the cable reel roller in wet or damp locations. DO NOT EXPOSE TO RAIN.
- Only use this unit for its intended purpose as a cable reel roller.
- DO NOT exceed load rating of the cable reel roller.
- ALWAYS inspect the cable reel roller before each use.
- DO NOT operate in explosive atmosphere.
- ALWAYS disconnect the cable reel roller before servicing.
- ALWAYS plug into grounded receptacle that is GFCI protected.
- KEEP all body parts, hair, loose clothing, etc., away from rotating parts and pinch points.
- DO NOT alter this cable reel roller. Doing so will void the warranty. Guards and safety features are provided for your protection.



SAFETY INFORMATION - CONTINUED

- DO NOT use an extension cord longer than 100 ft. Extension cord should be 12-gauge wire with ground.
- NEVER allow an operator or other personnel to stand in line with the cable pathway. When operating, operator should stand to the side of the cable reel roller and out of the path of the cable.
- ALWAYS feed the cable over the idler roller.
- ALWAYS maintain a dependable means of communication between feeding operator and pulling operator.
- ALWAYS position the idler roller properly for the size of reel being driven.
- It is highly recommended to use steel-flanged cable reels with this cable reel roller. Damaged or poor-quality wooden flanges may cause stalling or undue motor strain.



SPECIFICATIONS

Width – 122”

Length – 60 ³/₄”

Height – 19”

Weight – 2800 lbs.

Maximum 8’ diameter

Reel size – 96” width, 15 tons

Motor specs – 120 volts, 11.5 amps



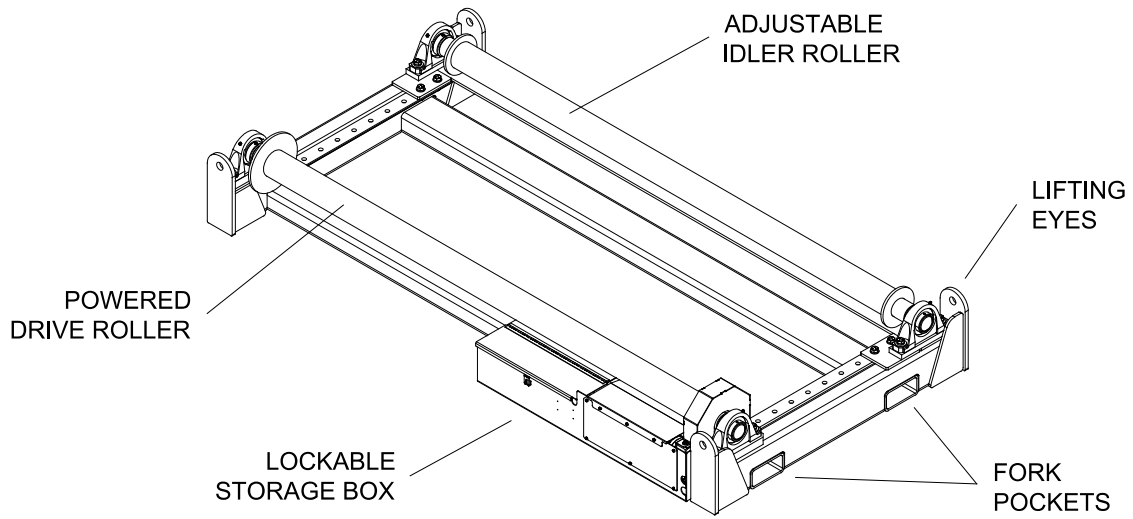
FEATURES

- Heavy duty welded frame for strength and durability
- Heavy duty self-aligning pillow block bearings
- Pendant control can be easily disconnected for safe storage
- Speed control for variable cable feeding rates
- One roller adjusts to accommodate various reel sizes
- On/off foot control for remote operation
- Rugged and durable drive motor
- Convenient forklift pockets on both sides of unit for quick transport with forklift

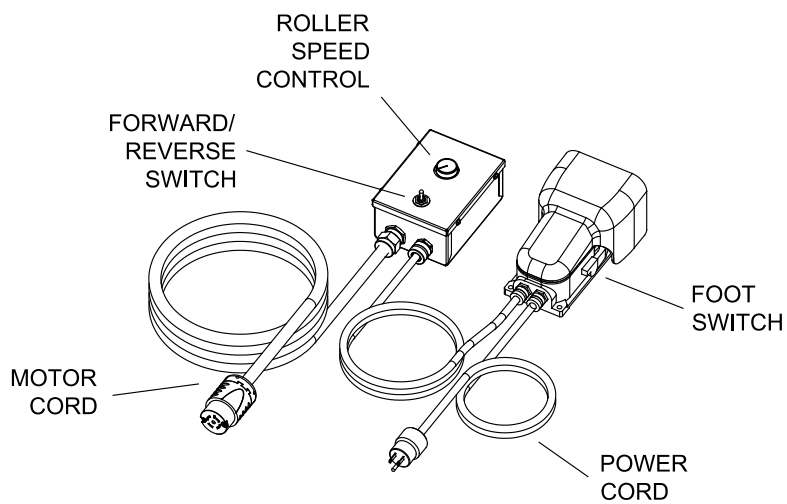


FEATURES - CONTINUED

615 CABLE REEL ROLLER



615-30HF HAND AND FOOT CONTROL

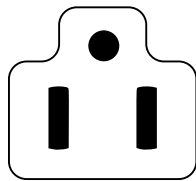


GROUNDING INSTRUCTIONS

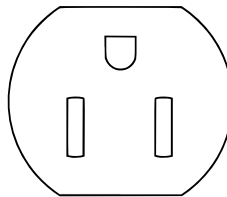
WARNING

ELECTRIC SHOCK HAZARD! Only connect the cable reel roller to a 15 amp GFCI protected circuit. Do NOT modify the plug which is provided with the unit. Failure to follow these warnings can result in serious injury or death.

This cable reel roller is intended for use on a circuit that has a receptacle that looks like the one illustrated below. The cable reel roller has a grounding plug that looks like the plug illustrated below.



PLUG



RECEPTACLE

In the event of a malfunction or breakdown, grounding provides a path of least resistance for electrical current to reduce the risk of electric shock. The cable reel roller is equipped with an electrical cord having an equipment grounding conductor and a grounding plug. Only connect the cable reel roller to a 15 amp GFCI protected receptacle which is properly installed and grounded to meet all applicable electrical codes. **DO NOT** use an adapter.

DO NOT modify the plug provided. If it will not fit the receptacle, have a proper receptacle installed by a qualified electrician.

Improper connection of the equipment grounding conductor can result in risk of electric shock. The conductor with insulation having an outer surface that is green with or without yellow stripes is the equipment grounding conductor. If repair or replacement of the electric cord or plug is necessary, do not connect the equipment grounding conductor to a live terminal.

Check with a qualified electrician or service personnel if the grounding instructions are not completely understood, or if in doubt as to whether the cable reel roller is properly grounded.

Use only 3-wire extension cords that have 3-prong grounding plugs and 3-pole receptacles that accept the cable reel roller's plug.

Repair or replace a damaged or worn cord immediately.



OPERATING INSTRUCTIONS

1. Move the cable reel roller into position for operation using the forklift pockets on the sides of the unit, or by the lifting eyes provided at each corner of the unit. Ensure the surface used to locate the cable reel roller is capable of supporting the combined weight of the unit plus the reel of cable.
2. Adjust the distance between the rollers (See "Idler Roller Position Chart" on pg. 8). Remove the four adjusting bolts (2 each side) connecting the idler roller plate to the reel roller base. Slide the idler roller assembly to the desired position and replace the 4 bolts (see Figure 6a).

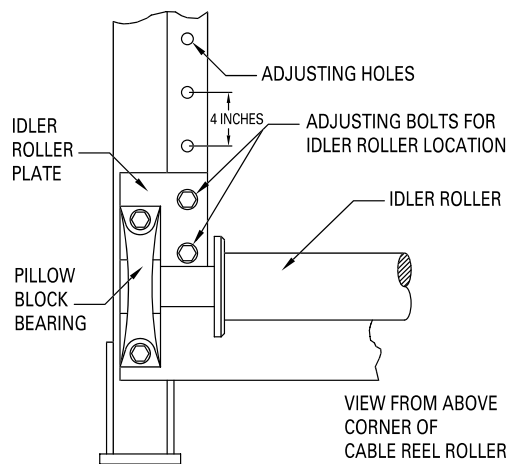


Figure 6a

3. Load the cable reel onto the cable reel roller such that the cable feeds from the top of the reel and over the idler roller (see Figure 6b).

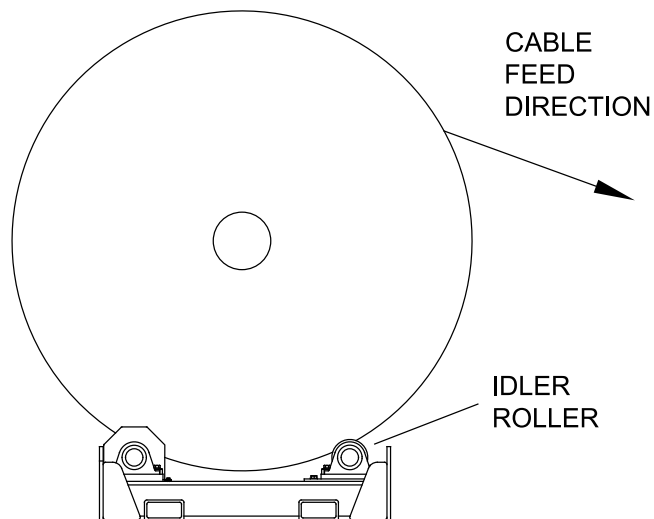


Figure 6b



OPERATING INSTRUCTIONS - CONTINUED

4. Use the hand-held control to set forward or reverse as required and to adjust the operating speed of the unit.
5. After making the adjustments with the hand controls, use the foot control to switch the unit off and on remotely.

NOTE: Always position the controls so that the operator is never in front of or behind the cable reel (see Figure 7).

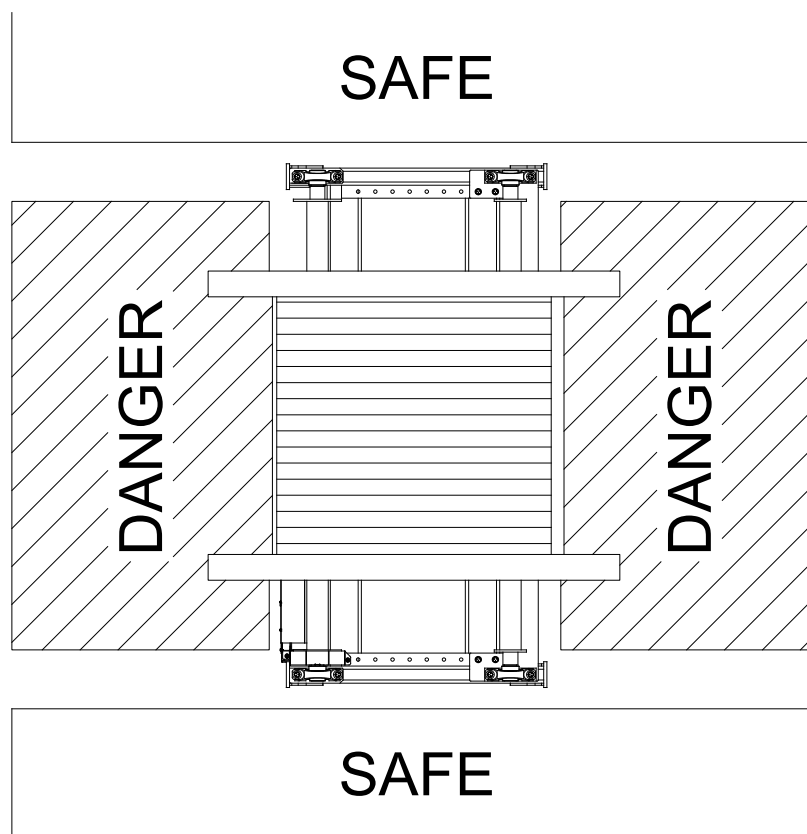


Figure 7



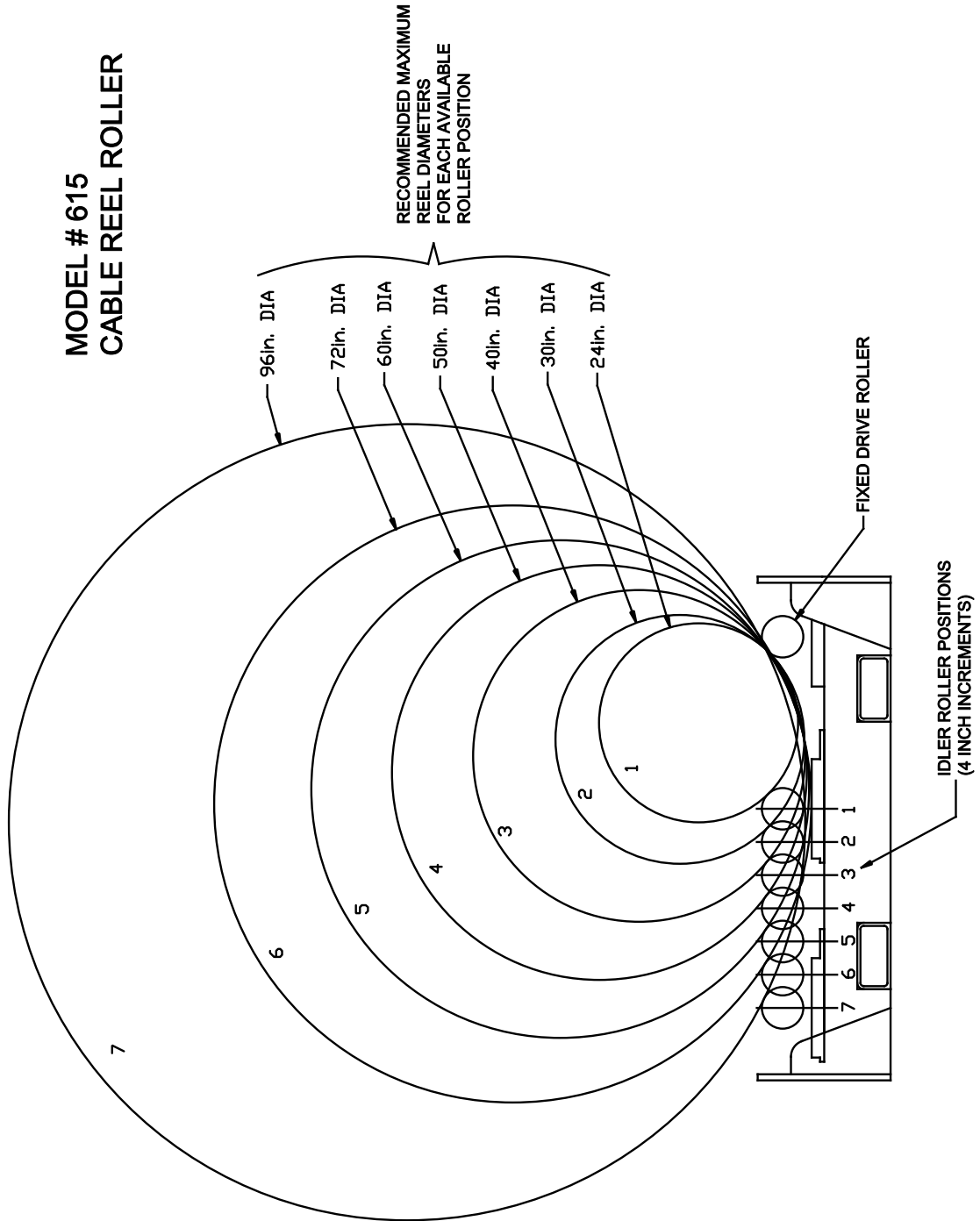
WARNING

NEVER allow an operator or other personnel to stand in line with the cable reel. When operating, operator should stand to the side of the cable reel roller and out of the path of the cable.



IDLER ROLLER POSITION CHART

MODEL # 615 CABLE REEL ROLLER



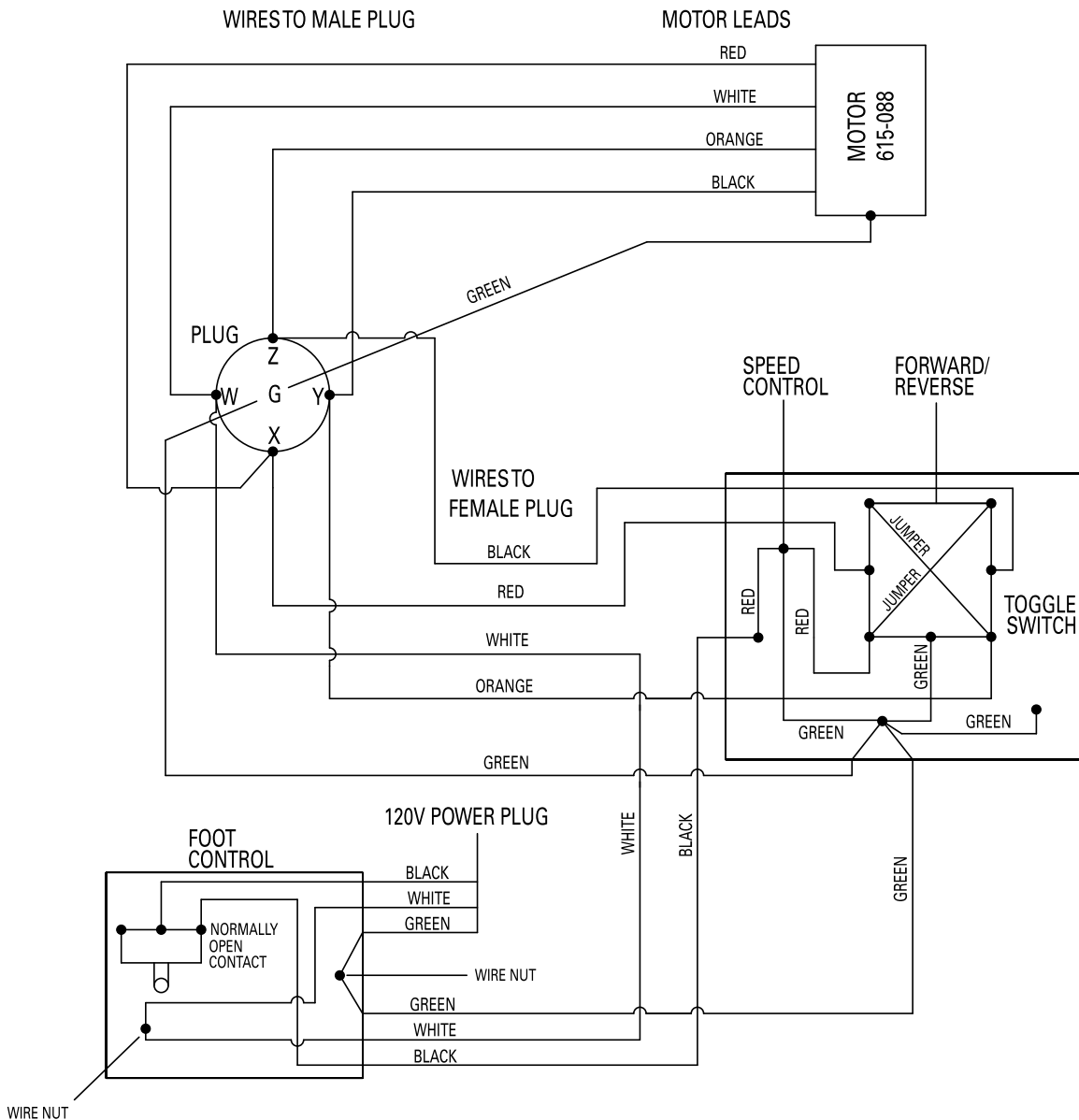


MAINTENANCE

- DO NOT store the cable reel roller in wet or damp locations.
- Grease the pillow block bearings every 20 hours of operation with a good quality multi-purpose (MP) grease.
- Lubricate drive chain every 20 hours of operation with 90W gear oil.
- Before each use, inspect the hand and foot control cords for damage.
- Inspect drive chain for wear every 40 hours of operation.

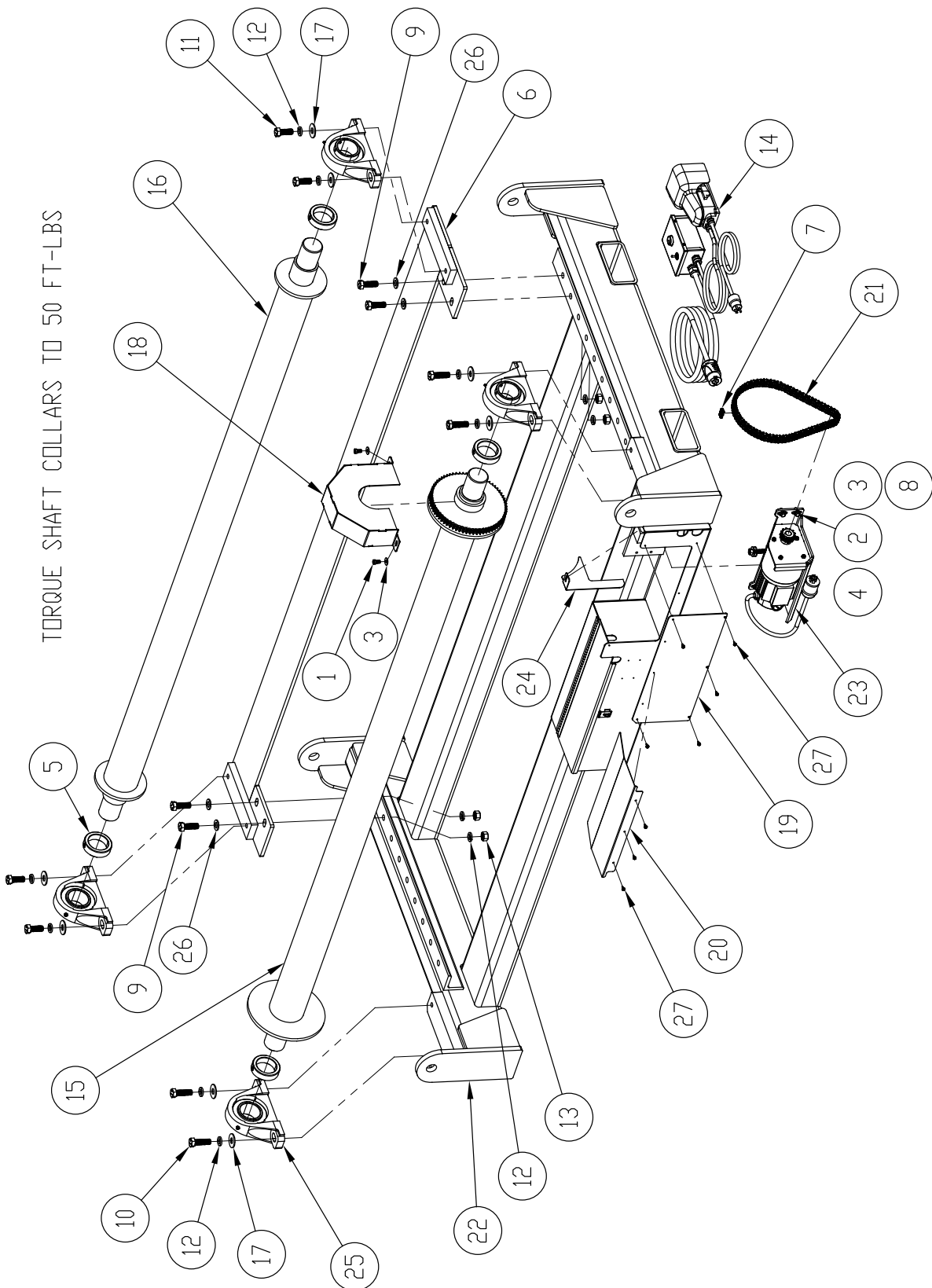


WIRING SCHEMATIC





EXPLODED VIEW - MAIN ASSEMBLY





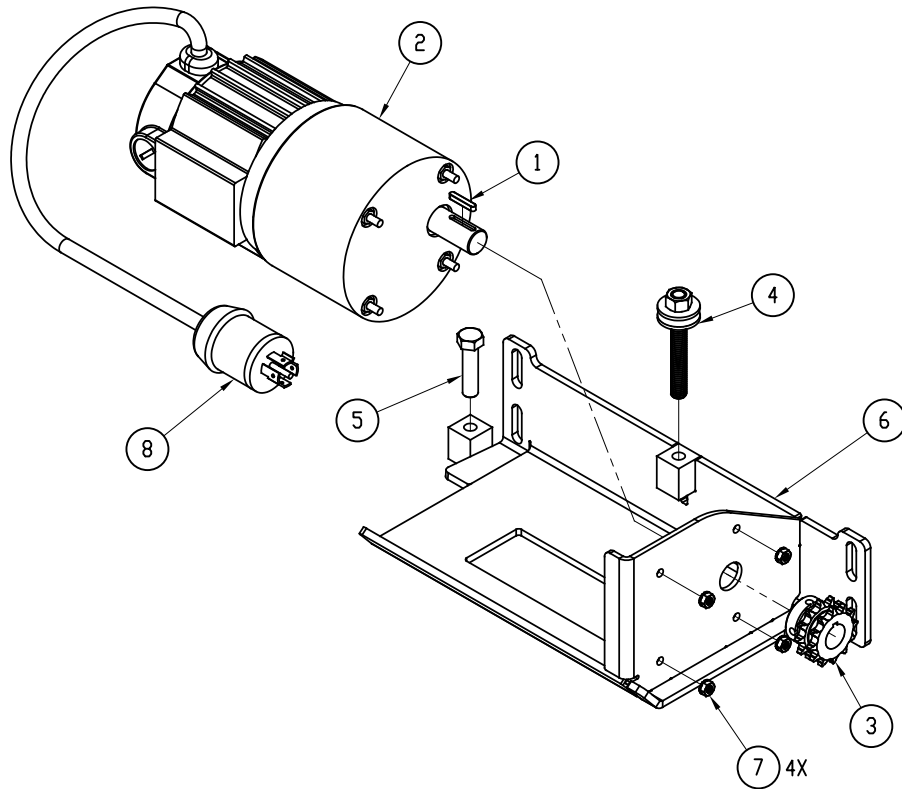
PARTS LIST – MAIN ASSEMBLY

ITEM #	PART NUMBER	DESCRIPTION	QTY.
1	33-53	SCREW-HEX HEAD CAP GR5 ZINC (3/8-16 X 3/4)	2
2*	452-27	WASHER-LOCK MEDIUM 3/8 ZINC	4
3*	506-3	WASHER-FLAT 3/8 (USS) ZINC	4
4*	524-11	3/8-16 X 1.0" HEX HEAD SCREW	4
5	615-17	SHAFT COLLAR	4
6	615-209	SLIDE PLATE-615 REEL ROLLER	1
7*	615-25A	MASTER LINK, D40	1
8*	615-29D	WASHER - OVERSIZE ZINC	2
9	615-2F	SCREW-HEX HEAD CAP GR5 ZINC (3/4-10 X 2.25)	4
10	615-2G	SCREW-HEX HEAD CAP GR5 ZINC (3/4-10 X 2.5)	4
11	615-2H	SCREW-HEX HEAD CAP GR5 ZINC (3/4-10 X 2)	4
12	615-2I	WASHER, LOCK 3/4"	12
13	615-2J	NUT-HEX ZINC (3/4-10)	4
14	615-30HF	HAND & FOOT CONTROL ASSEMBLY	1
15	615-488A	DRIVE ROLLER	1
16	615-488B	IDLER ROLLER	1
17	615-4B	WELD WASHER	8
18	615-500	CHAIN GUARD- 615 REEL ROLLER	1
19	615-637	MOTOR COVER PLATE	1
20	615-639 BENT	RAIN SHIELD	1
21*	615-647	CHAIN - DOUBLE 40, 79 LINKS	1
22	615-700	BOX ON FRAME WELDMENT	1
23*	615-880	615 GEARMOTOR ASM	1
24*	615-884 BENT	CHAIN SHIELD	1
25	615-9	PILLOW BLOCK BEARING	4
26	77-017	WASHER-FLAT 3/4" (SAE)	4
27	77-033A	SCREW-HEX HEAD SELF DRILL ZINC (#10-32 X 1/2)	8

* INCLUDED IN GEARMOTOR REPLACEMENT KIT 615-880KIT



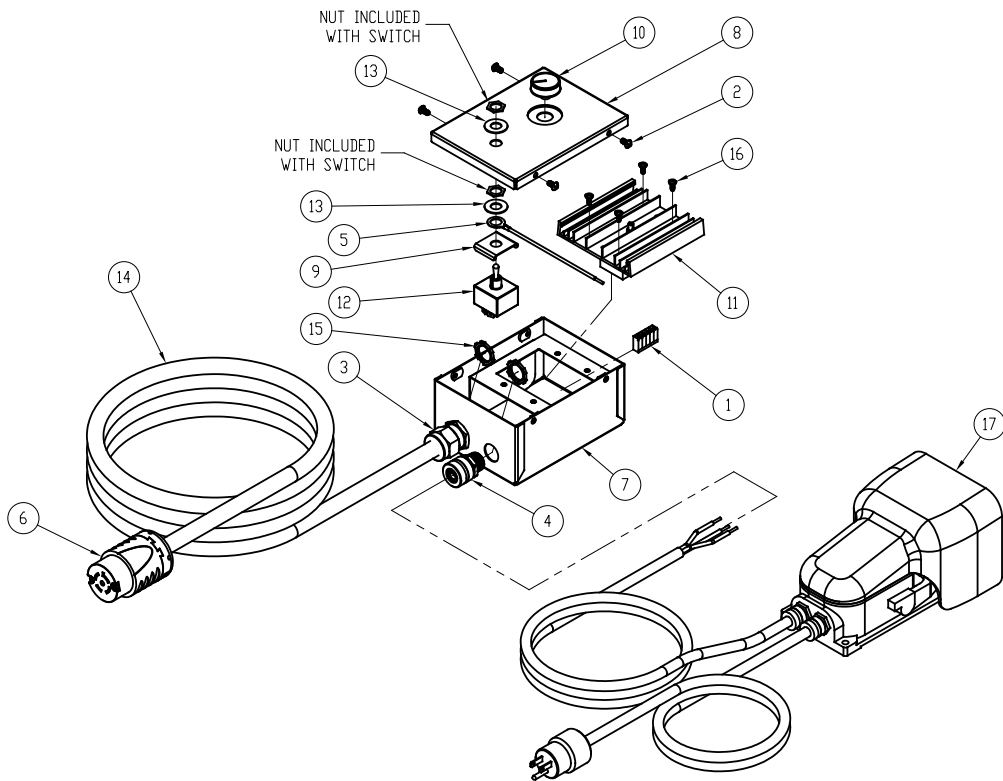
EXPLODED VIEW – MOTOR ASSEMBLY



PARTS LIST – MOTOR ASSEMBLY

ITEM #	PART NUMBER	DESCRIPTION	QTY.
1	615-046	KEY - 3/16" X 1-1/8" ROUNDED	1
2	615-088	MOTOR - 615 - 88 VARIANT	1
3	615-089	SPROCKET - D40B12, 7/8" BORE	1
4	615-156	JACK SCREW-615 DRIVE	1
5	615-33	1/2"-13 X 2 HEX BOLT, ZP	1
6	615-881	GEARMOTOR MOUNTING PLATE	1
7	88-68	NUT-KEP (1/4-28) W/EXT LOCKWASHER	4
8	615-4	PLUG - TWIST LOCK MALE	1

EXPLODED VIEW – HAND AND FOOT CONTROL



PARTS LIST – HAND AND FOOT CONTROL

ITEM #	PART NUMBER	DESCRIPTION	QTY.
1	100-032	SPLICING CONNECTOR	1
2	451-22	SCREW-PAN PHILLIPS (10-32 X 3/8")	4
3	615-15	STRAIN RELIEF	1
4	615-18	STRAIN RELIEF	1
5	615-32	GROUNDING WIRE - SWITCH	1
6	615-5	PLUG - FEMALE TWIST LOCK	1
7	615-517	CONTROL BOX - BOTTOM WELDMENT	1
8	615-518	CONTROL BOX - TOP WELDMENT	1
9	615-571	SWITCH RETAINER	1
10	615-6A-KNOB	SPEED CONTROL KNOB	1
11	615-6A	SPEED CONTROL	1
12	615-7	TOGGLE SWITCH	1
13	615-722	WASHER-F/R SWITCH	2
14	615-8B	CORD - 12/5 X 12FT LONG	1
15	77-041A	NUT-LOCK CONDUIT 1/2	2
16	77-053	SCREW-PAN HEAD SLOT (8-32 X 3/8)	4
17	615-30	FOOT CONTROL ASSEMBLY	4